

Southerly Line of Langford Ave.  
44.55'

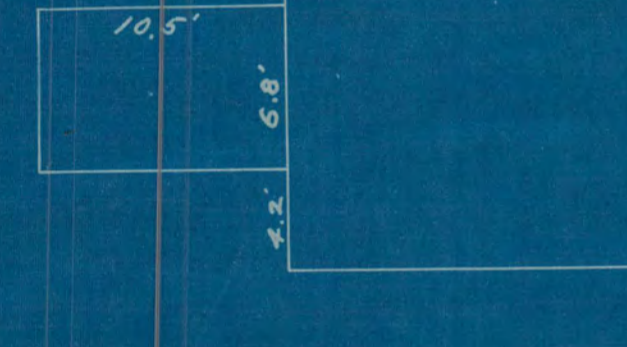


**AUXILIARY PLAT**

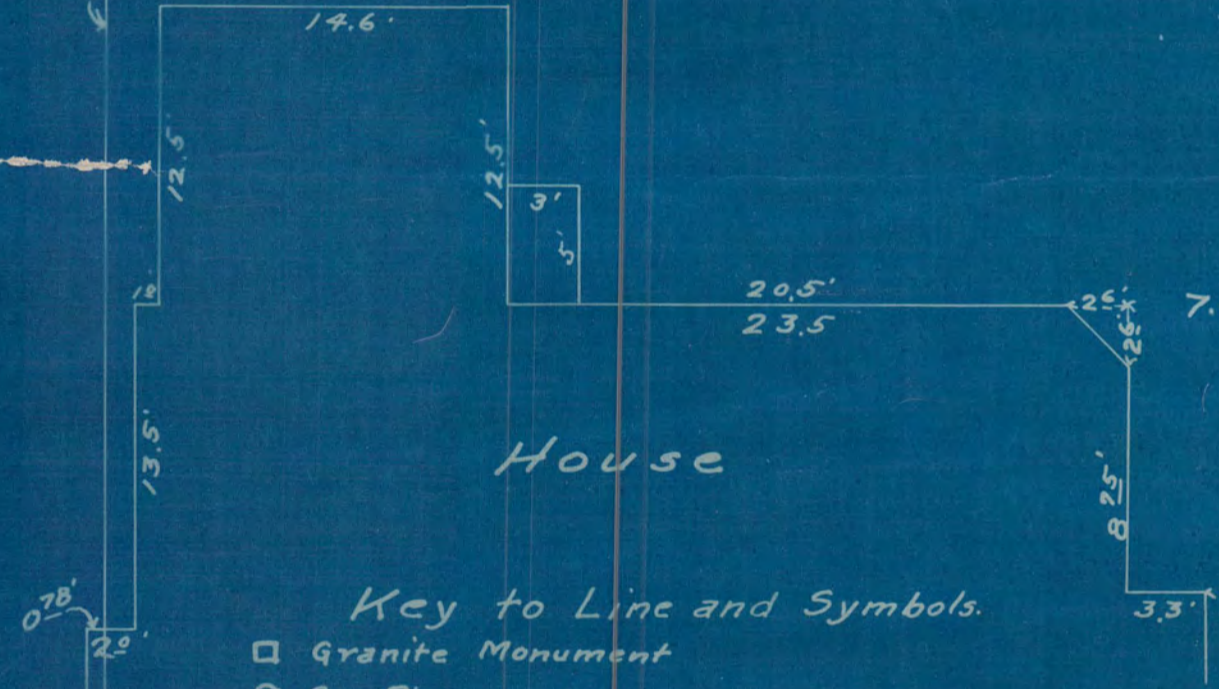
Showing Property Landmarks and Ties  
in Vicinity of disputed Boundary between  
the north and south parts of Lot 3  
and near the northeast corner of  
Lot 2, Block 37, St Anthony Park,  
Minn, according to survey made  
by H. B. Roe, September 14<sup>th</sup>  
and 17<sup>th</sup>, 1912.  
Scale 1" = 8'

Note :- The corner of the stone wall  
indicated on plot is 81.82' north of  
the south line of Lot 3, measured  
along the West line of said Lot 3;  
the corner of the continuous board  
fence is 0.83' farther north, still  
or a total of 82.65' from the  
south line of Lot 3.

Barn.



House



**Key to Line and Symbols.**

- Granite Monument
- Gas Pipe
- ⊗ Cross Cut in Stone or Cement Wall, (Hole in Center).
- Wire & Wood-Picket Fence.
- ▨ Stone Wall.
- Continuous or Solid Board Fence.

Center Line Langford Ave.

Center Line Knapp St.

**PLAT**  
of Lots 1, 2 and the South  
Part of Lot 3, Block 37,  
St. Anthony Park, Minn., as  
surveyed Sept. 14<sup>th</sup> 17<sup>th</sup>, 1912,  
by H. B. Roe.  
Scale 1" = 30'