

LOTS 1, 2 & 3, BLOCK 63.

LYING EAST OF SOUTH WABASHA ST.

WEST ST. PAUL PROPER.

JOHN B. IRVINE, SURVEYOR.

408 GLOBE BLDG.

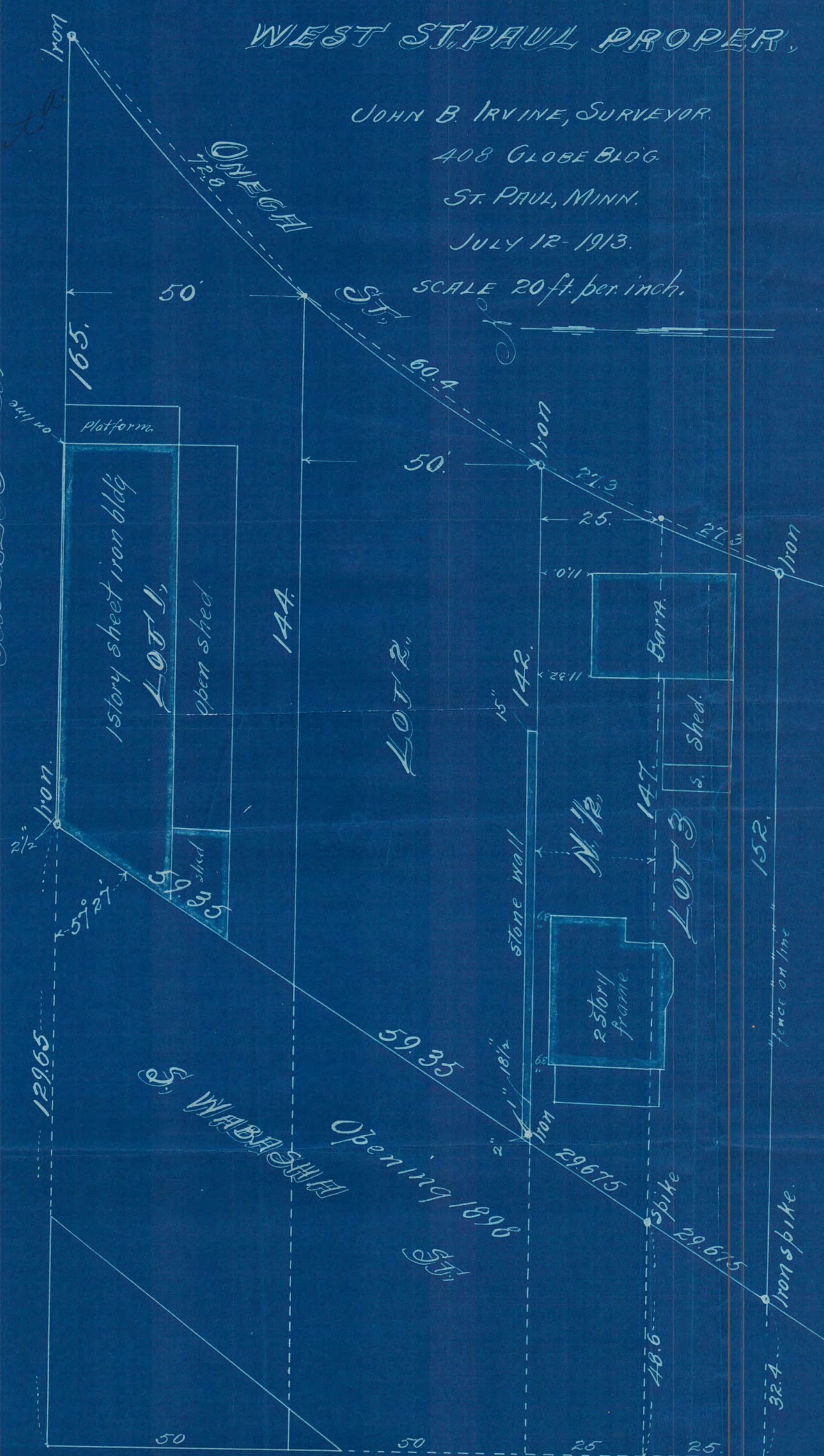
ST. PAUL, MINN.

JULY 12-1913.

SCALE 20 ft. per inch.

Exhibit

CONGRESS ST



GOFF AVE.

1403