

THE MABON TRACT

MARCH 31ST 1905

SCALE 20' = 1 INCH

J. H. ... C.E.

ST.

WEST LINE SEC. 31, T29 R. 23
RICE 30

13.76

29.15

CENTRE LINE OF CENTRAL AVE.

SOUTH LINE OF CENTRAL AVE. S 59° W 276.8

15
15

S 47° 50' E 137.53

N 44° 49' W 136.24

A
D

Deed Line

N 60° 19' E

187.6

Held by possession

N 57° 07' E

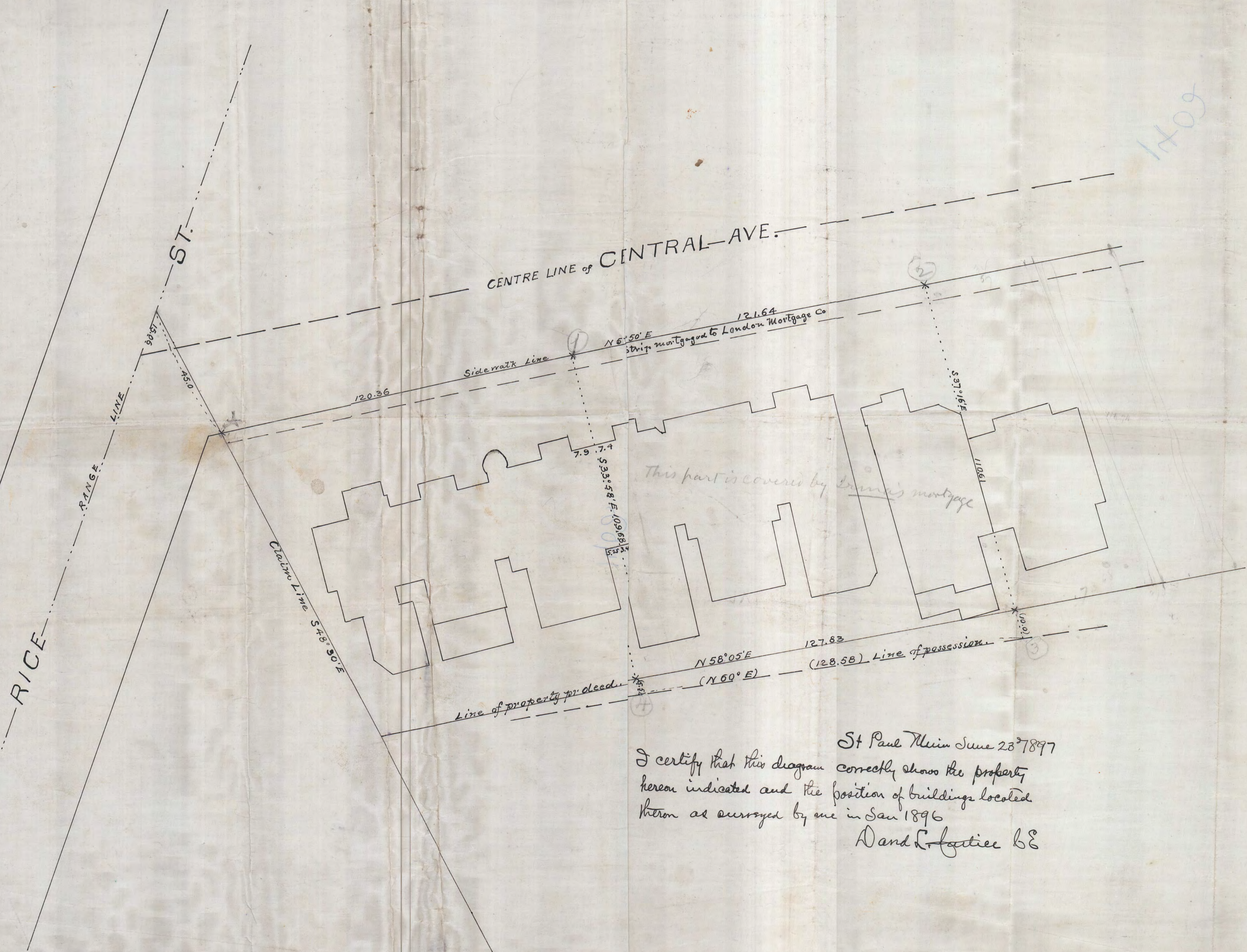
81.7

B
C

1402

2091

1409



St Paul Minn June 23rd 1897
 I certify that this diagram correctly shows the property
 hereon indicated and the position of buildings located
 thereon as surveyed by me in Jan 1896
 A and C. Latimer C.E.

1402