

20 Bryants +

1341

ABSTRACT OF TITLE

MADE BY OFFICIAL OFFICE OF RAMSEY COUNTY

No. 1

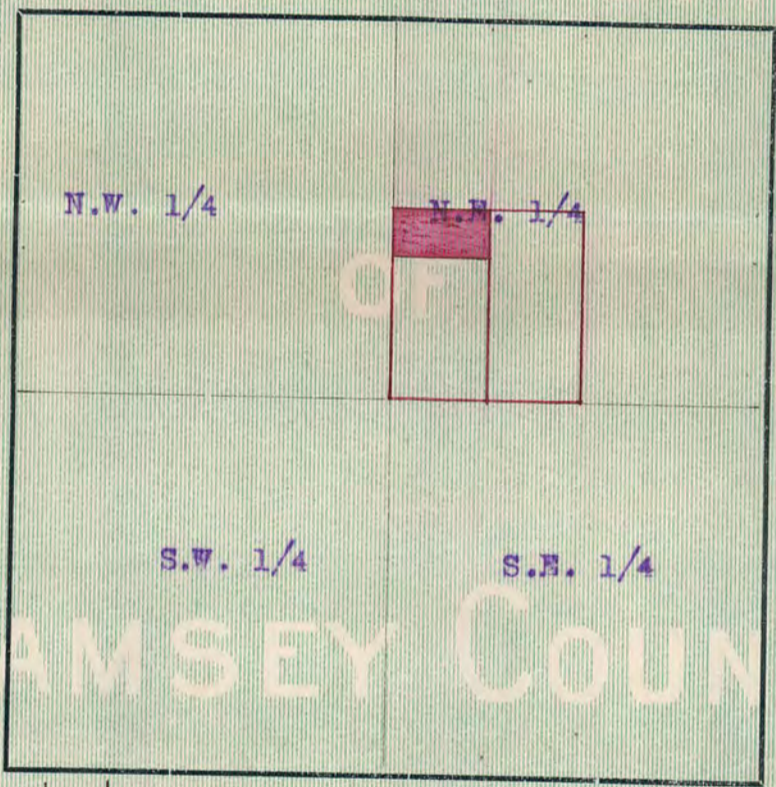
TO
Lot 20, Block 1, Bryant's addition to St. Paul.

OFFICIAL

Premises described in caption are located in the S.W. 1/4 of N.E. 1/4
of Section Number 2 Township Number 28 North of
Range Number 23 West of the Fourth Principal Meridian.
SECTION. 2

ABSTRACT OFFICE

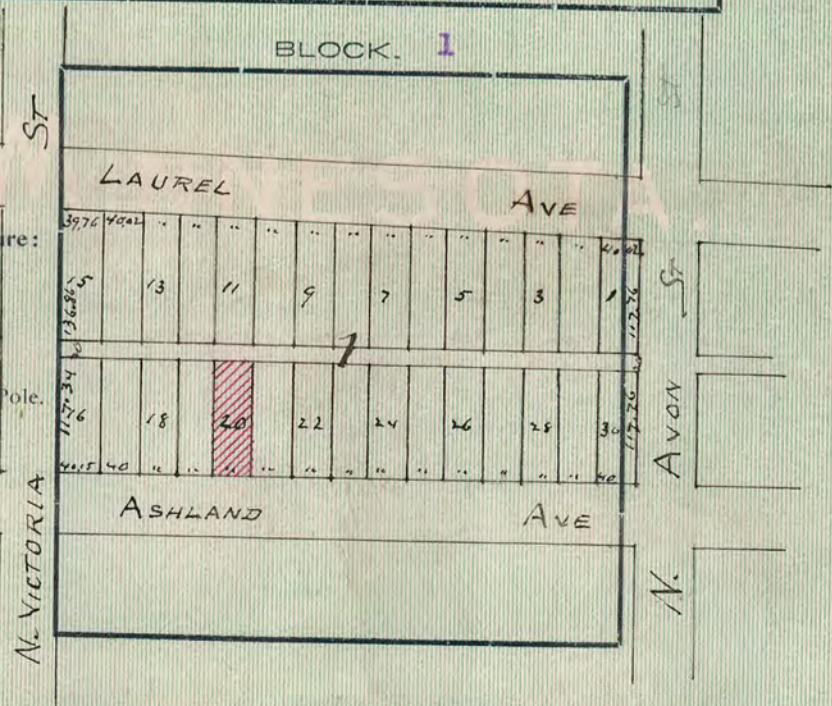
No. 2



RAMSEY COUNTY.

No. 3

Old Time Surveyors Measure:
7 ⁹²/₁₀₀ inches make 1 Link.
100 Links, or 66 feet, 1 Chain.
3 feet, 1 Yard.
5 1/2 yds., or 16 1/2 ft., 1 Rod or Pole.
4 Rods, 1 Chain.
80 Chains (5280 feet), 1 Mile.



1341

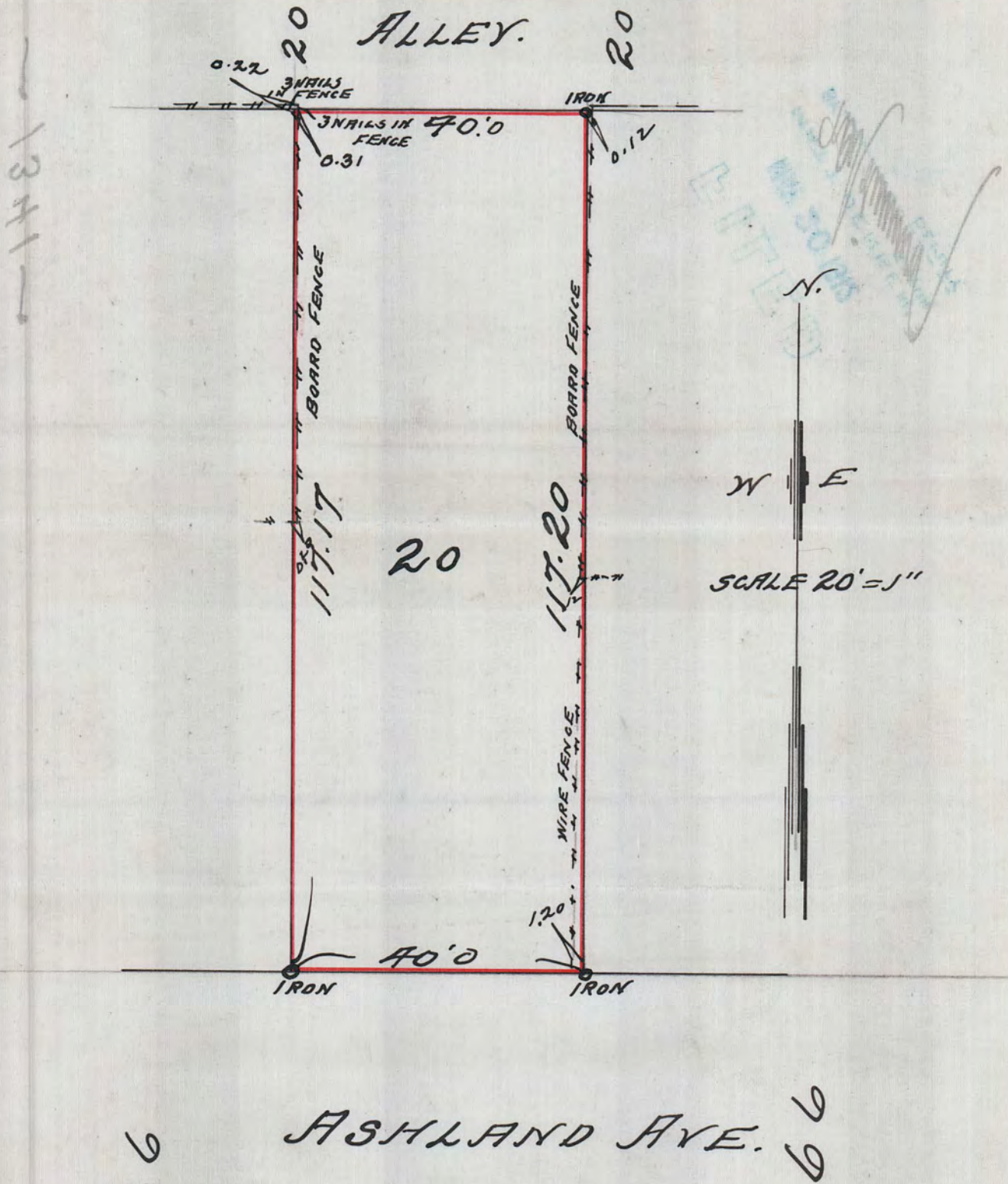
BRYANT'S ADD
 SURVEY OF
 LOT 20 BL 1

JENS PEDERSEN
 SURV.

ST. PAUL MAY 31 1912

I HEREBY CERTIFY TO HAVING SURVEYED
 LOT 20 BL 1 BRYANT'S ADD TO ST. PAUL AND HAVE
 PLACED IRON MONTS AT THE CORNERS AND ALL
 ENCROACHMENTS ARE HEREON SHOWN AND ALL
 DISTANCES AND LOCATIONS ARE CORRECT.

Jens Pedersen
 SURV.



1341

66
 1481

1341