

1315

ABSTRACT OF TITLE

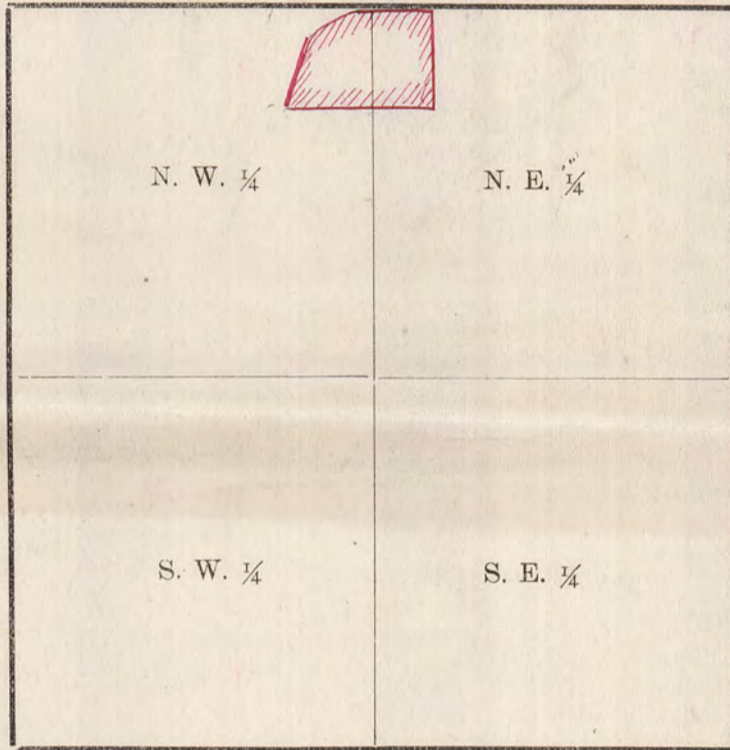
MADE BY OFFICIAL OFFICE OF RAMSEY COUNTY
TO _____

No. 1

Lots 7 and 16, Block 5, and Lots 9 and 18, Block 6, Excepting E'ly
40 ft thereof, St. Anthony Park, Minn.

Premises described in caption are located in the NE 1/4 of NW 1/4
of Section Number 28 Township Number 29 North of
Range Number 23 West of the Fourth Principal Meridian.

SECTION



No. 2

Old Time Surveyors Measure

$7\frac{92}{100}$ inches make 1 Link.

100 Links, or 66 feet, 1 Chain.

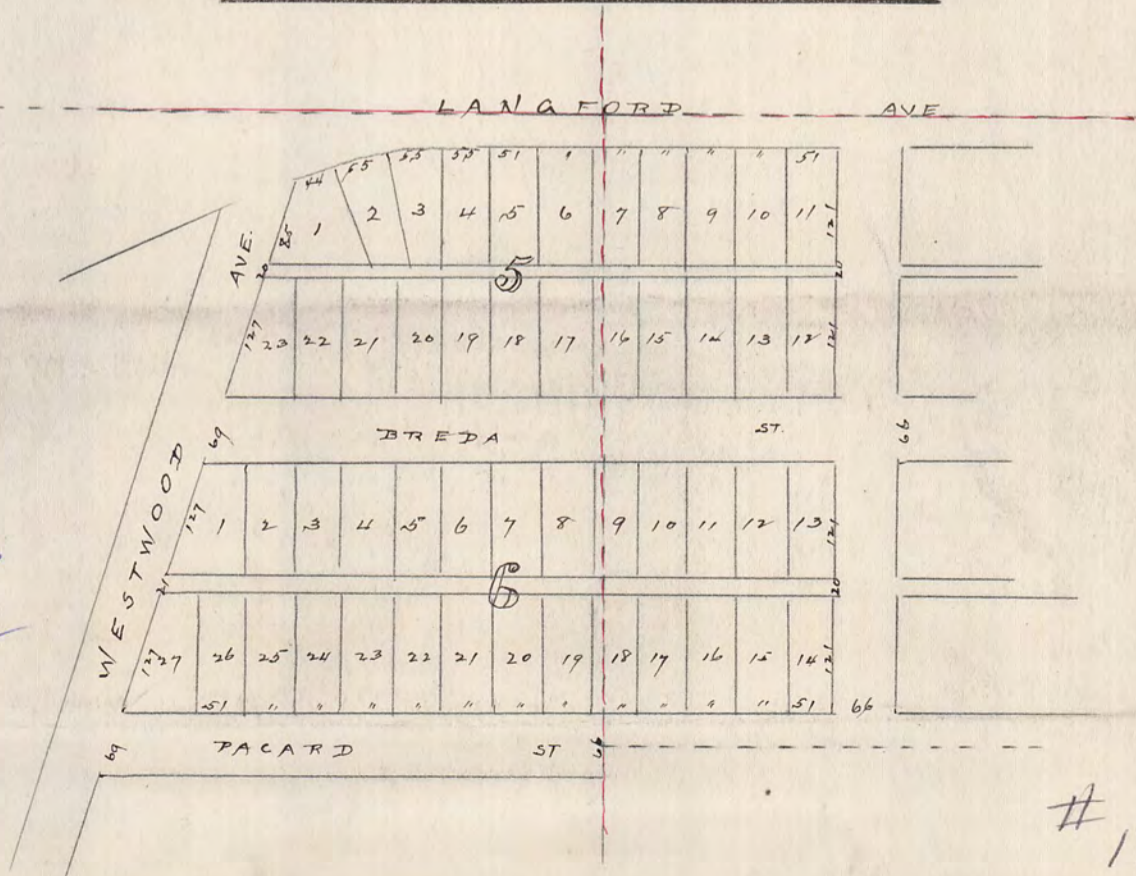
3 feet, 1 Yard.

$5\frac{1}{2}$ yds. or $16\frac{1}{2}$ ft., 1 Rod or Pole.

4 Rods, 1 Chain,

80 Chains (5280 feet) 1 Mile.

No. 3



1315

1315