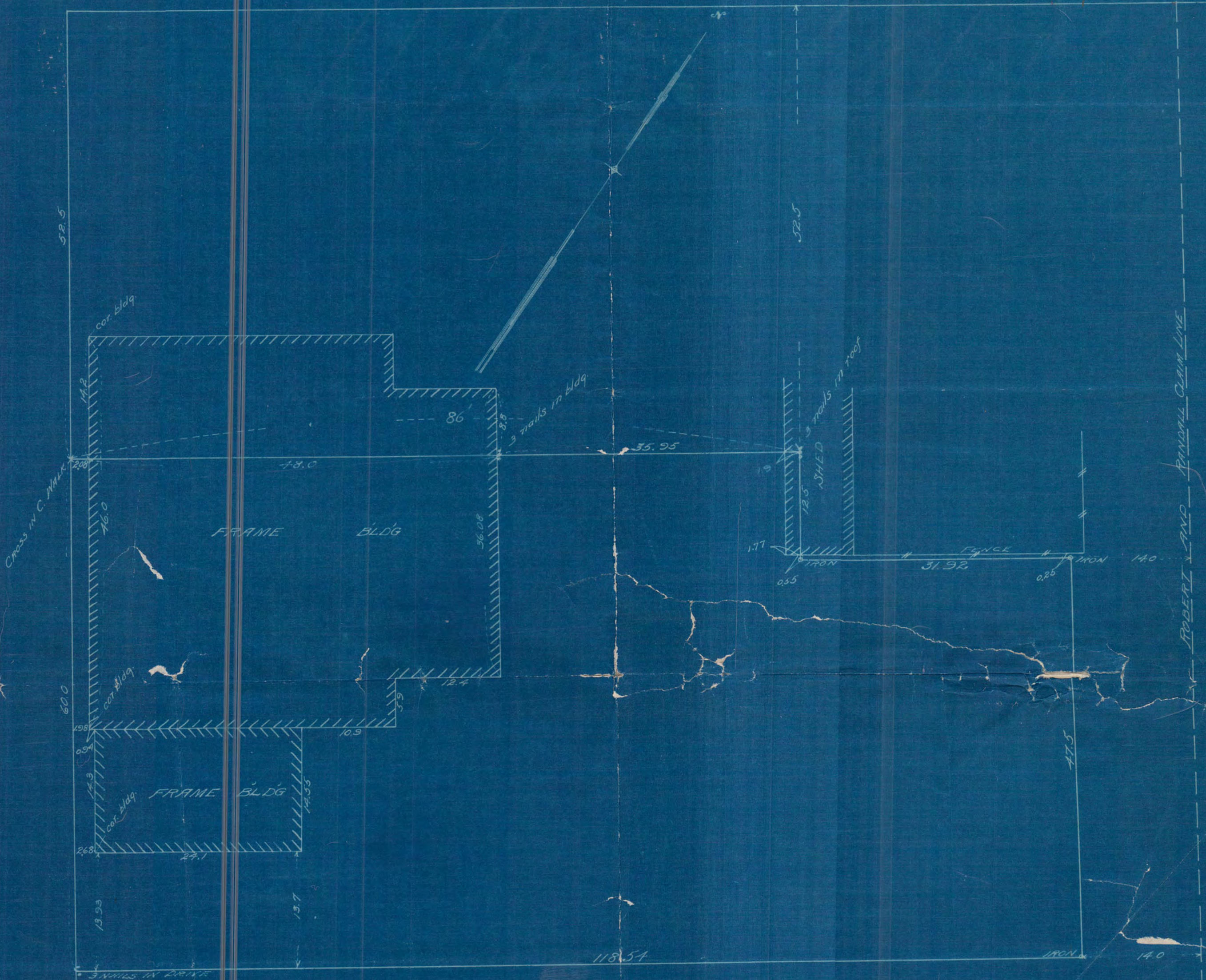


NINTH

ST.

ST.

ROBERT



SURVEY OF THAT PORTION OF BLOCK 15 ROBERT & RANDALL'S ADD. TO THE CITY OF ST. PAUL DESCRIBED AS FOLLOWS: COMMENCING AT A POINT ON THE E¹/₄ LINE OF ROBERT ST. 118.5 FT S¹/₄ FROM THE S¹/₄ LINE OF 9th ST, THENCE E¹/₄ AND PARALLEL WITH THE S¹/₄ LINE OF 9th ST 118.54 FT. TO A POINT DISTANT 140 FT. N¹/₄ FROM THE ROBERT & RANDALL CLAIM LINE, THENCE N¹/₄ AND PARALLEL WITH SAID CLAIM LINE 47.5 FT, THENCE N¹/₄ AND PARALLEL WITH THE S¹/₄ LINE OF 9th ST. 31.92 FT. TO A POINT DISTANT 86.0 FT. E¹/₄ FROM THE E¹/₄ LINE OF ROBERT ST, THENCE N¹/₄ AND PARALLEL WITH THE E¹/₄ LINE OF ROBERT ST. 12.5 FT. TO A POINT DISTANT 52.5 FT. S¹/₄ FROM THE S¹/₄ LINE OF 9th ST, THENCE N¹/₄ AND PARALLEL WITH THE S¹/₄ LINE OF 9th ST. 86.0 FT. TO THE E¹/₄ LINE OF ROBERT ST, THENCE S¹/₄ ALONG SAID E¹/₄ LINE 60.0 FT. TO PLACE OF BEGINNING.

Sept 1911

SCALE 10" = 1'

1260