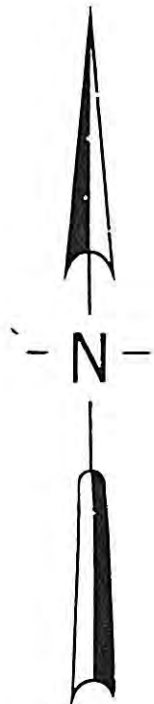
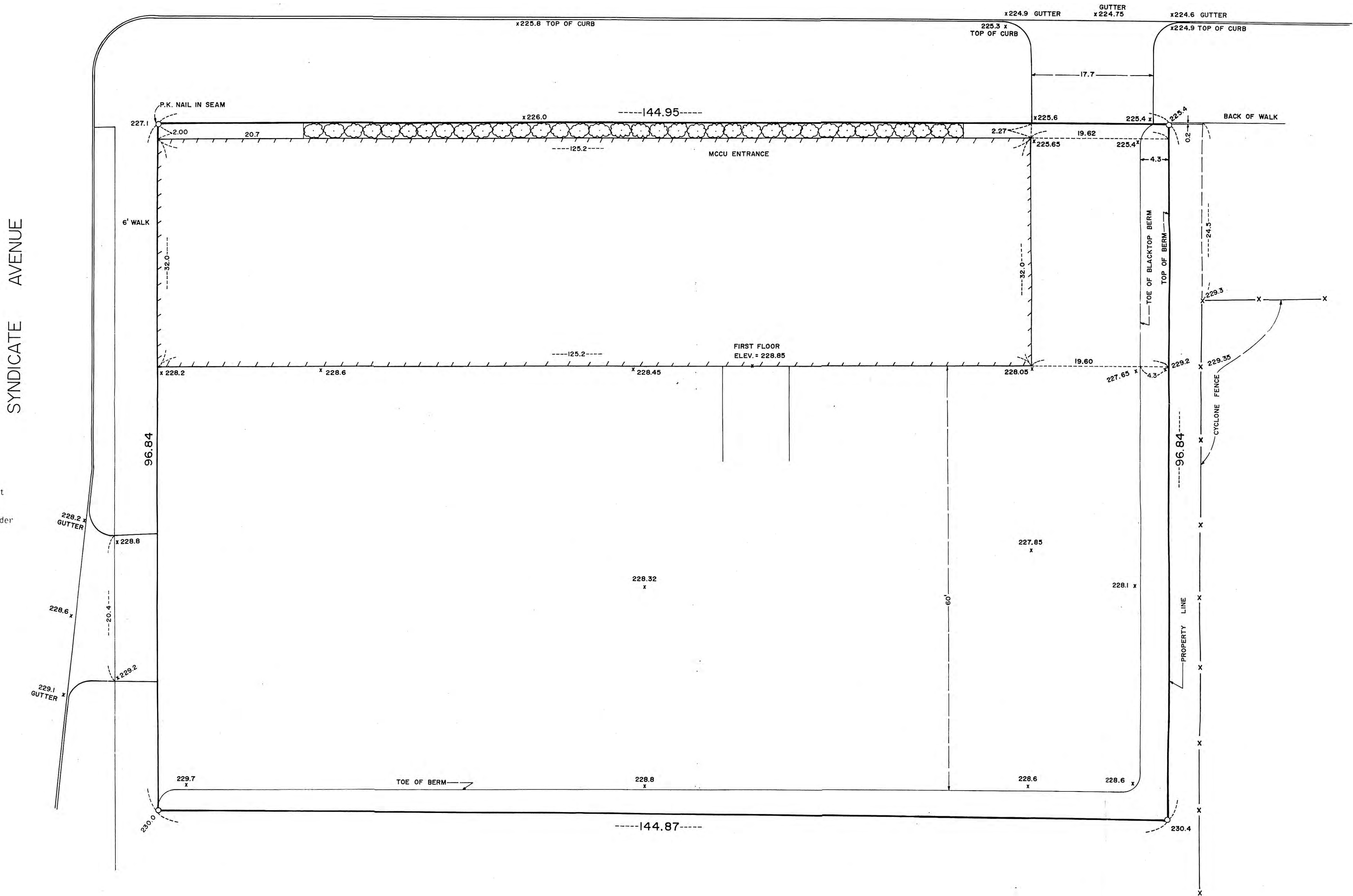


LOCATION SURVEY FOR: MINNESOTA CENTRAL CREDIT UNION / CORPORATE CREDIT UNION

UNIVERSITY AVENUE



SCALE 1" = 8'

B.M. TOP NUT OF HYDRANT, CORNER OF SYNDICATE & UNIVERSITY, ELEV. = 230.04

TOP NUT OF HYDRANT, SW CORNER OF GRIGGS & UNIVERSITY, ELEV. = 221.11

CORRECTION TO SEA LEVEL ELEVATIONS ADD 694.10

PROPERTY DESCRIPTION

The West 45 feet of the North 96.84 feet of Lot 5, and the North 96.84 feet of Lots 6 and 7, MIDWAY INDUSTRIAL DIVISION, Ramsey County, Minnesota.

I hereby certify that this sketch, plan or report was prepared by me or under my direct supervision and that I am a duly Registered Land Surveyor under the laws of the State of Minnesota.

Woodrow A. Brown
Woodrow A. Brown, R.L.S.

Date October 18, 1935 Reg. No. 15230