

BOUNDARY SURVEY FOR: B & S RIGGING & ERECTION, INC.

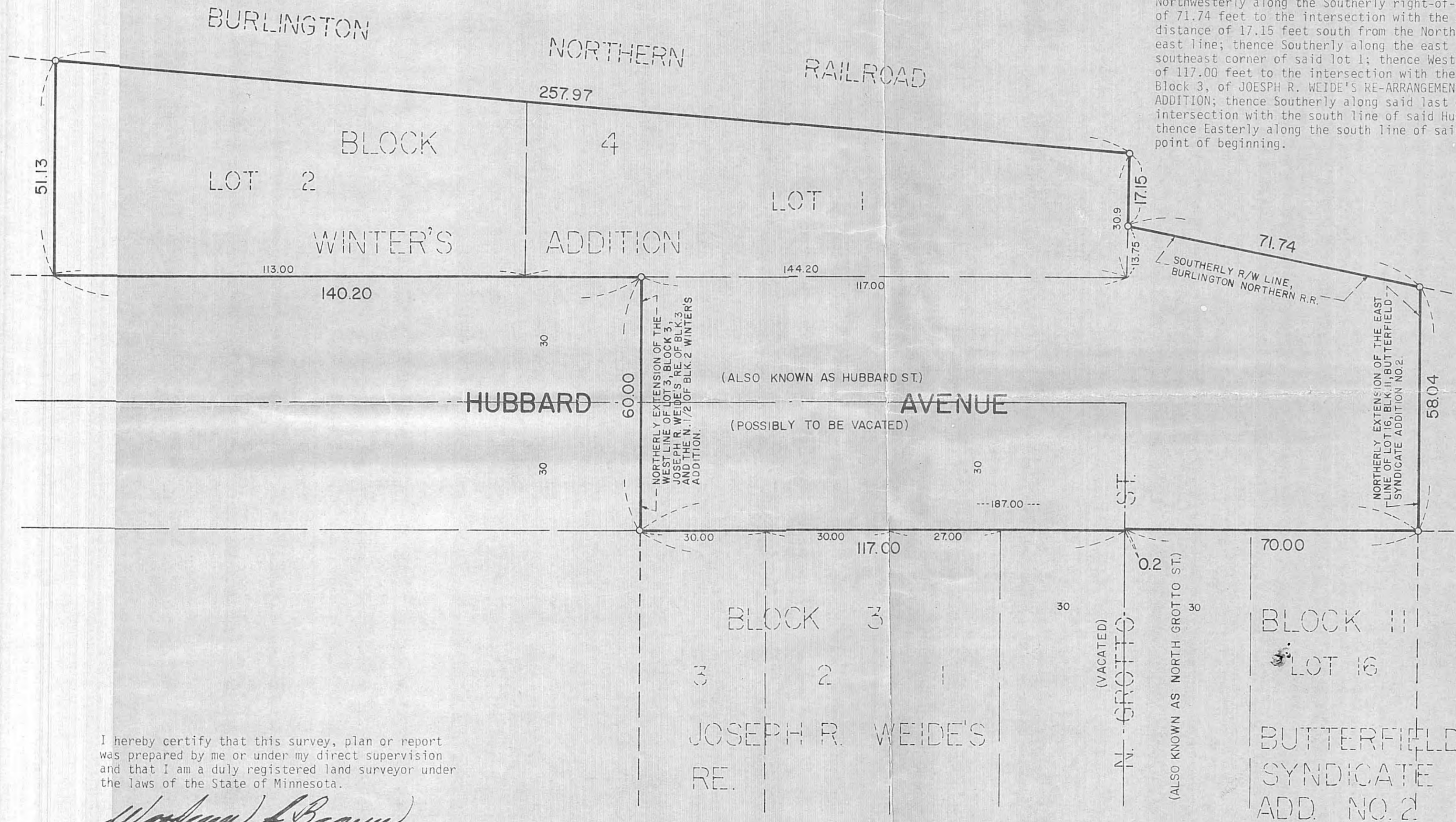
12553

PROPERTY DESCRIPTION (AS PROVIDED)

Lots 1 and 2, Block 4, WINTERS ADDITION, according to the recorded plat thereof, Ramsey County, Minnesota.

Proposed legal description for that portion of Hubbard Avenue (also known as Hubbard Street) to be vacated.

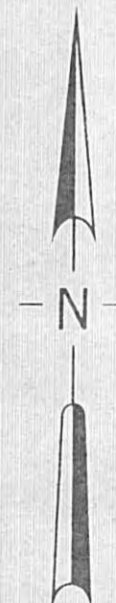
That part of ^{vacated} Hubbard Avenue, ^{dedicated in the plat} also known as Hubbard Street described as beginning at the Northeast corner of Lot 16, Block 11, BUTTERFIELDS SYNDICATE ADDITION NO. 2; thence Northerly along the Northerly extension of the East line of said lot 16 a distance of 58.04 feet to the intersection with the Southerly right-of-way line of the Burlington Northern railway; thence Northwesterly along the Southerly right-of-way of said Burlington Northern Railway a distance of 71.74 feet to the intersection with the East line of Lot 1, Block 4, WINTERS ADDITION, a distance of 17.15 feet south from the Northeast corner of said lot 1 as measured along the east line; thence Southerly along the east line of said lot 1, a distance of 13.75 feet to the southeast corner of said lot 1; thence Westerly along the south line of said lot 1, a distance of 117.00 feet to the intersection with the northerly extension of the west line of Lot 3, Block 3, of JOSEPH R. WEIDE'S RE-ARRANGEMENT OF BLOCK 3 AND THE N 1/2 OF BLOCK 2 WINTERS ADDITION; thence Southerly along said last described line a distance of 60.00 feet to the intersection with the south line of said Hubbard Avenue (also known as Hubbard Street); thence Easterly along the south line of said Hubbard Avenue a distance of 187.00 feet to the point of beginning.



I hereby certify that this survey, plan or report was prepared by me or under my direct supervision and that I am a duly registered land surveyor under the laws of the State of Minnesota.

Walter A. Braun

Date December 6, 1984 Reg. No. 15230



SCALE: 1" = 20'

W. BROWN LAND SURVEYING, INC.

S.E. 1/4 SEC. 26, T. 29, R. 23.

25-29-23
35-29-23, 36-29-23

FRONT

CALVARY

CEMETERY

12-1810
010
00
Geo Code (L)
Total 4,370, 38.40
(2,684, 127.4)

T-12553

ST PAUL. MINNEAPOLIS AND MANITOBA. RY.

HUBBARD ST

ST

JOSEPH R. WEIDES

SEMINARY NORTHERN ROUTE

RE-AR.

ENGLEWOOD -

WINTER

MINNEHAHA

158.05 78.70

CONDOMINIUM NO. 245
EVERGREEN CONDOMINIUM

15 14 13 12 11 10 9 8 7 6 5 4 3 2 1

STINSON ST.

BURGESS ST.

TOPPING ST.

ATWATER ST.

ST ALBANS

STATE DEED TO CITY

12-16610 (10-15)

12-16610 (5)

161-09

12-16610 (11)

12-16610 (12)

12-16610 (13)

12-16610 (14)

12-16610 (15)

12-16610 (16)

12-16610 (17)

12-16610 (18)

12-16610 (19)

12-16610 (20)

12-16610 (21)

12-16610 (22)

12-16610 (23)

12-16610 (24)

12-16610 (25)

12-16610 (26)

12-16610 (27)

12-16610 (28)

12-16610 (29)

12-16610 (30)

12-16610 (31)

12-16610 (32)

12-16610 (33)

12-16610 (34)

12-16610 (35)

12-16610 (36)

12-16610 (37)

12-16610 (38)

12-16610 (39)

12-16610 (40)

12-16610 (41)

12-16610 (42)

12-16610 (43)

12-16610 (44)

12-16610 (45)

12-16610 (46)

12-16610 (47)

12-16610 (48)

12-16610 (49)

12-16610 (50)

12-16610 (51)

12-16610 (52)

12-16610 (53)

12-16610 (54)

12-16610 (55)

12-16610 (56)

12-16610 (57)

12-16610 (58)

12-16610 (59)

12-16610 (60)

12-16610 (61)

12-16610 (62)

12-16610 (63)

12-16610 (64)

12-16610 (65)

12-16610 (66)

12-16610 (67)

12-16610 (68)

12-16610 (69)

12-16610 (70)

12-16610 (71)

12-16610 (72)

12-16610 (73)

12-16610 (74)

12-16610 (75)

12-16610 (76)

12-16610 (77)

12-16610 (78)

12-16610 (79)

12-16610 (80)

12-16610 (81)

12-16610 (82)

12-16610 (83)

12-16610 (84)

12-16610 (85)

12-16610 (86)

12-16610 (87)

12-16610 (88)

12-16610 (89)

12-16610 (90)

12-16610 (91)

12-16610 (92)

12-16610 (93)

12-16610 (94)

12-16610 (95)

12-16610 (96)

12-16610 (97)

12-16610 (98)

12-16610 (99)

12-16610 (100)

128