

LOT 4 BLOCK 42.
 KITTSON'S ADD.

JOHN B. IRVINE SURVEYOR.
 408 GLOBE BLDG.
 ST. PAUL, MINN.
 AUG. 17-1911.
 SCALE 20ft. per inch.

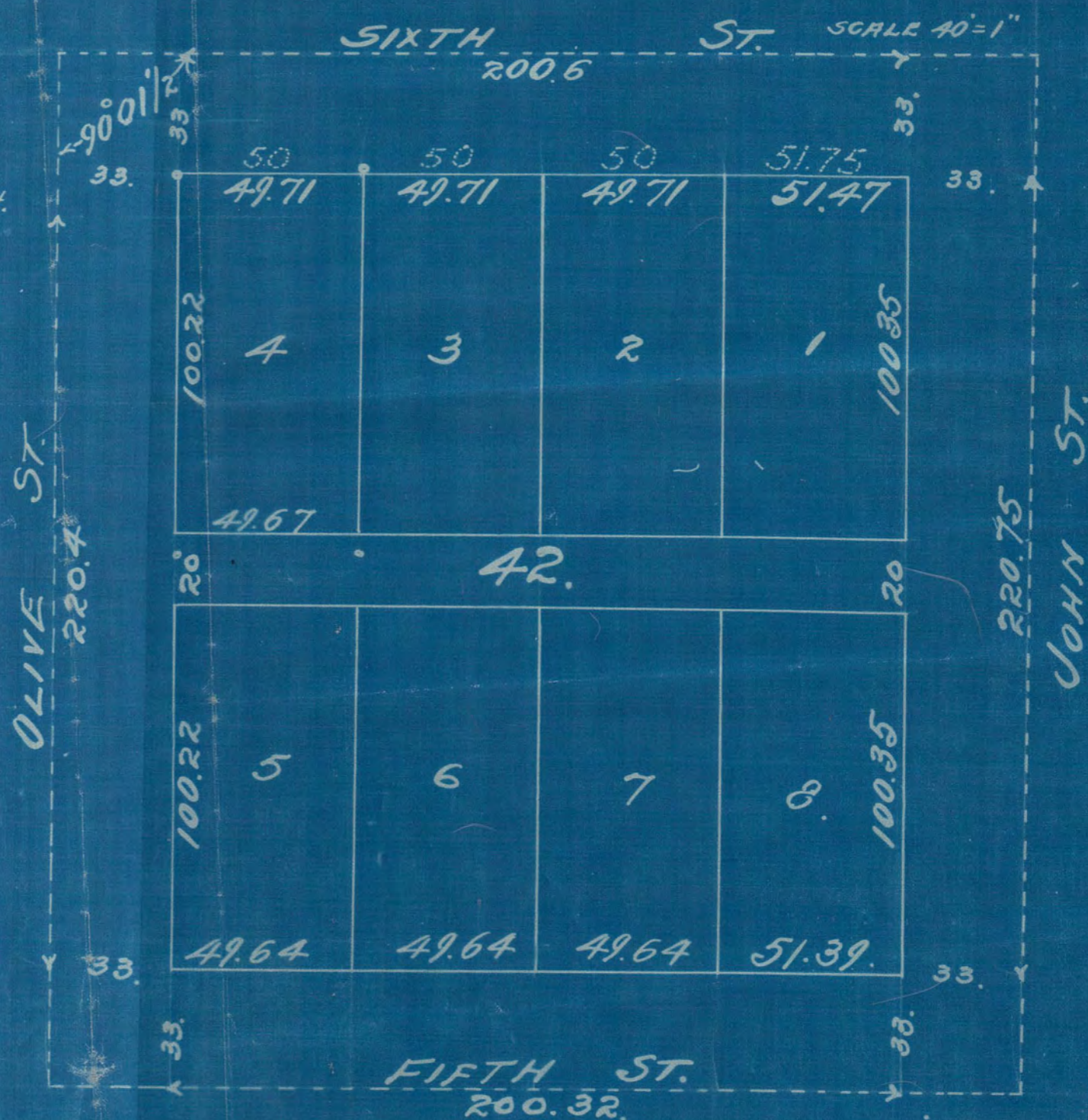
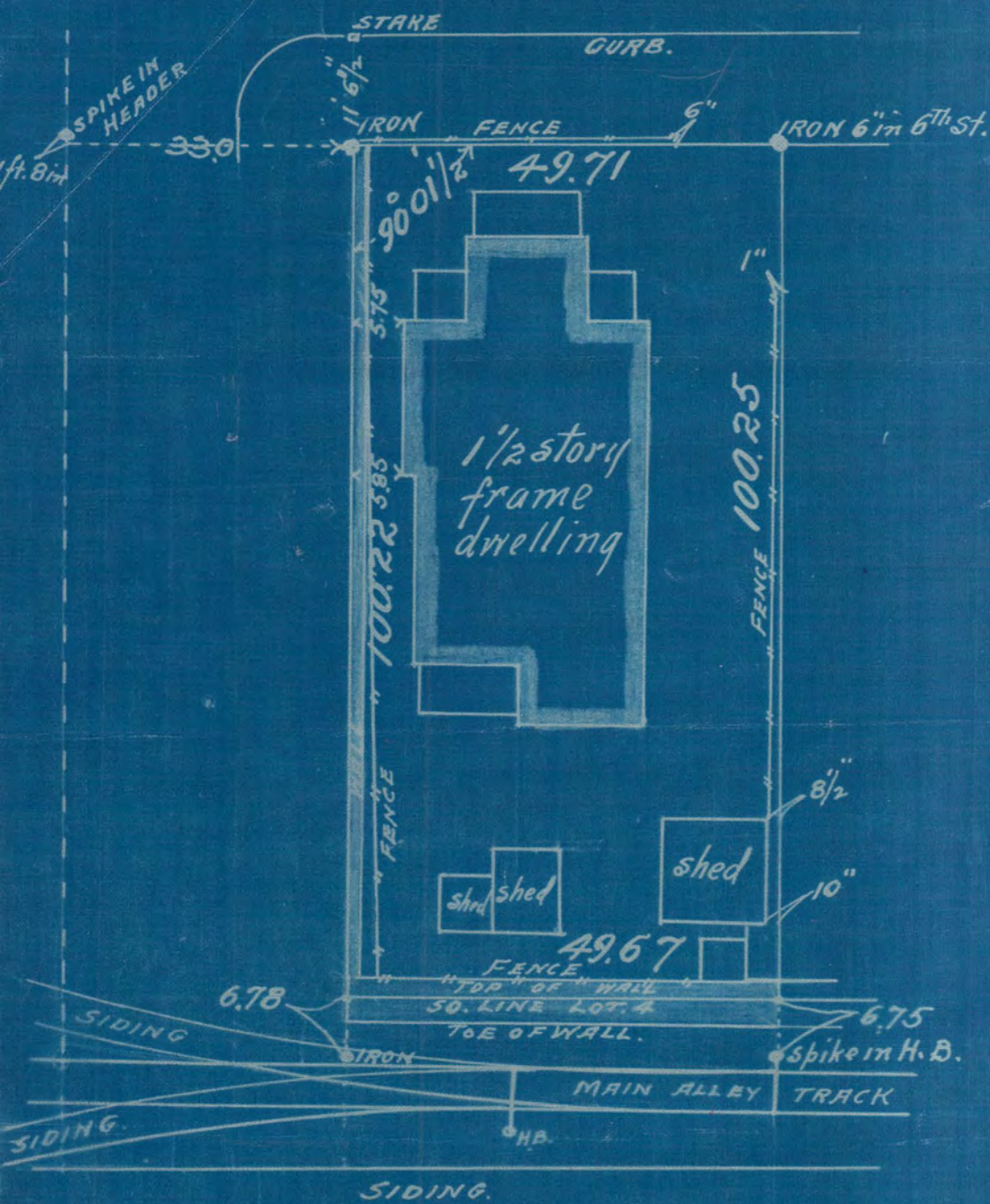
thereby certify to having surveyed lot 4 block 42
 Kittson's Addition, and located the house, sheds
 fences and walls thereon as shown by this map
 and the same is correct.

Aug. 17-1911.

John B. Irvine
 Surveyor.

E. SIXTH ST.

SIXTH ST. SCALE 40'=1"



 1250