

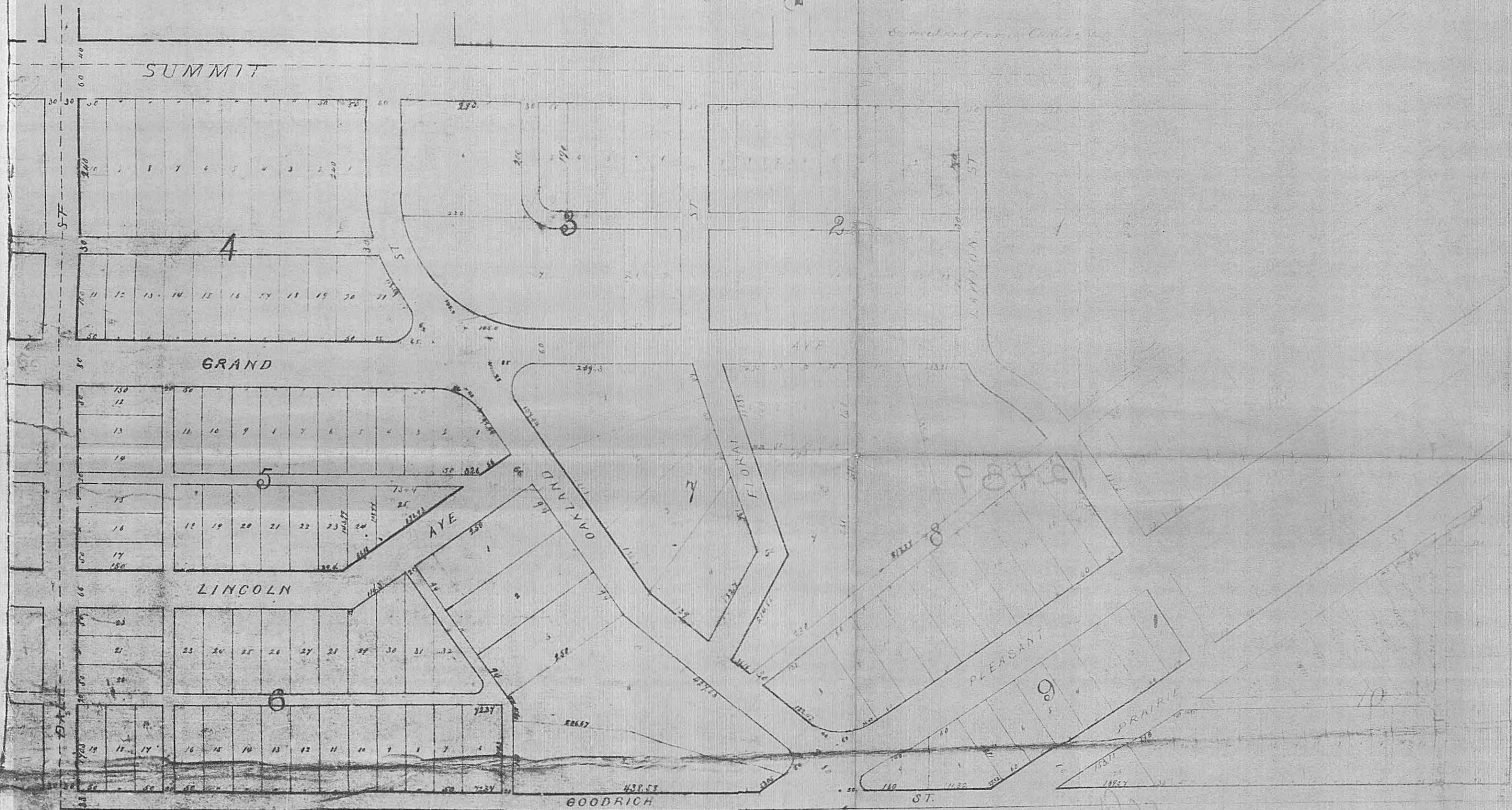
# TERRACE PARK

12

## ADDITION

### TO

## St Paul.



State of Minnesota  
County of Ramsey

We the undersigned Proprietors of Terrace Park Addition to the City of St. Paul Ramsey County State of Minnesota do hereby certify that the foregoing plat was surveyed and plotted by us for public purposes, and we do hereby give for public use the streets and alleys as designated therein. Witness our hands and seals this seventeenth day of September 1871.

*James C. Best* (Seal)  
*John C. Taylor* (Seal)  
*James C. Best* (Seal)

And I, *John C. Taylor*, do hereby certify that the person who executed the above mentioned plat is the same person as the person who executed the same plat for the use and purposes therein mentioned.

*John C. Taylor* (Seal)  
*John C. Taylor* (Seal)

We certify that this is a correct plat of Terrace Park Addition to St. Paul, Minnesota, as shown by the original survey of the same.

*John C. Taylor* (Seal)  
*John C. Taylor* (Seal)

*John C. Taylor* (Seal)  
*John C. Taylor* (Seal)

*John C. Taylor* (Seal)  
*John C. Taylor* (Seal)

*John C. Taylor* (Seal)  
*John C. Taylor* (Seal)

*John C. Taylor* (Seal)  
*John C. Taylor* (Seal)

*John C. Taylor* (Seal)  
*John C. Taylor* (Seal)

*John C. Taylor* (Seal)  
*John C. Taylor* (Seal)