

BROWN AND JACKSONS  
SURVEY OF

E 77 1/2 FT OF N 1/2 AND THE W. 36 FT LYING W OF E 32 FT.  
OF S 1/2 OF LOT 2 BLOCK #1

APR 29 - 1911

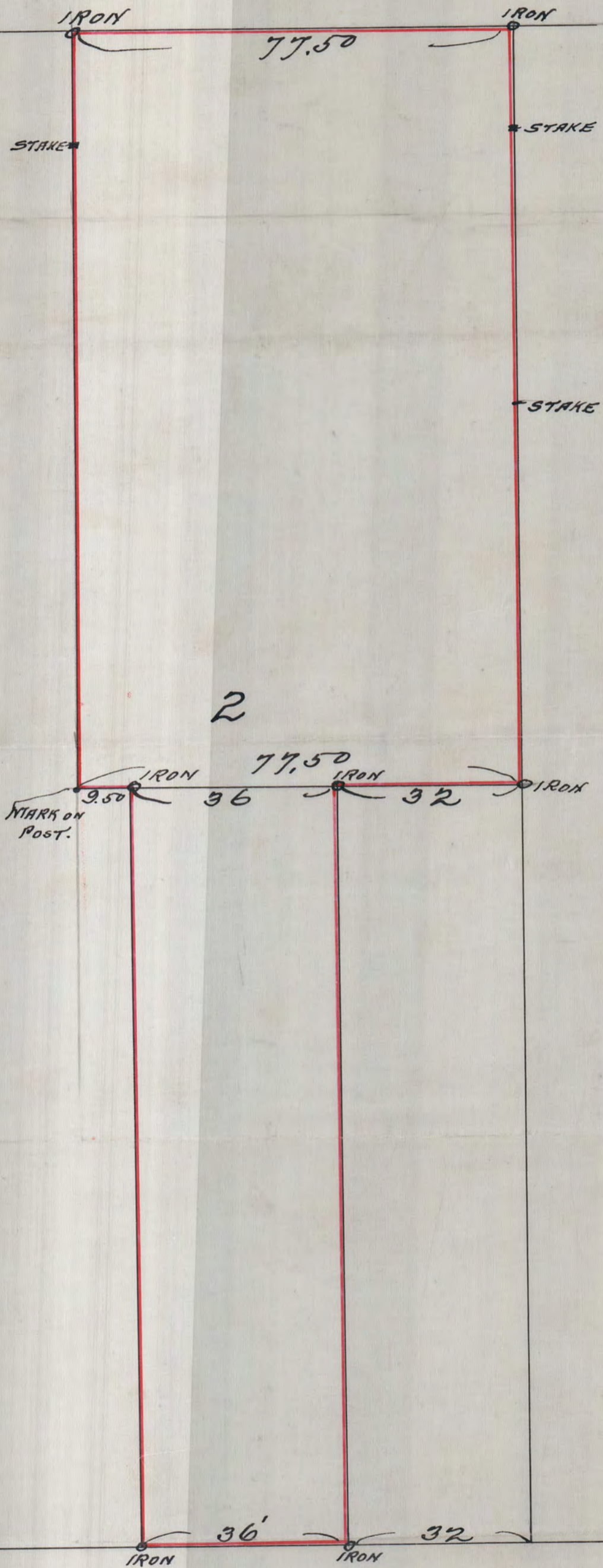
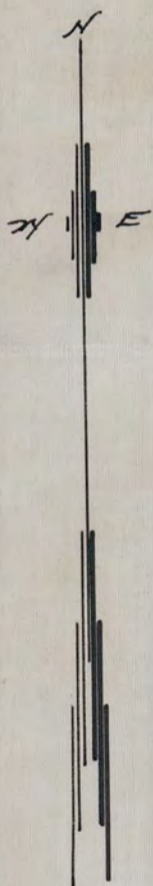
SCALE 20' = 1"

JENS PEDERSEN  
SURV

60

BUNKER ST.

60



PAGE ST.

60

60

#1232