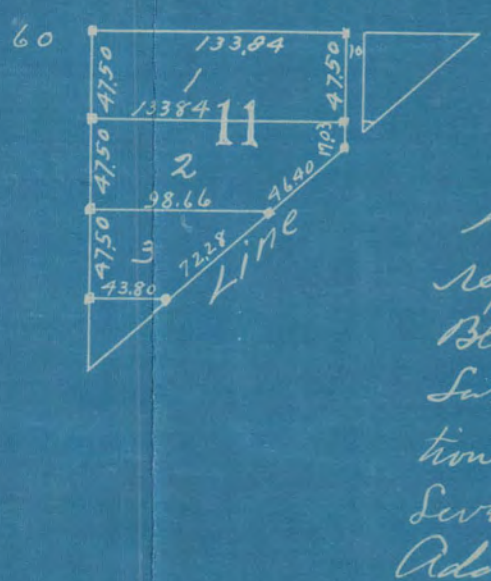
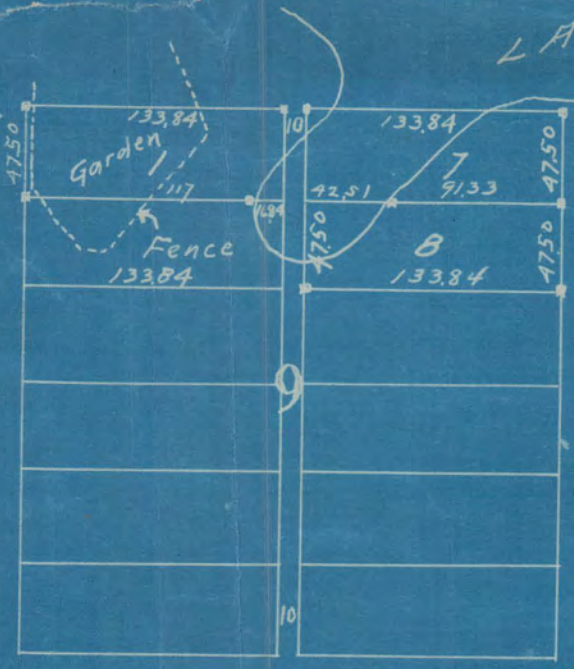


• Indicates Oak Hub



St. Paul, Minn.  
 June 12, 1911.  
 We certify this diagram correctly represents Lots 7 & 8 Block 4 Lots 1-7 & 8 Block 9, Lots 1-2-7 & 8 Block 10, and Lots 1-2 & 3 Block 11 (except those portions of said lots taken for streets and Sewer) Kinney, Bond and Trader's Addition to St. Paul as surveyed by us in June 1911.

Fowble & Fitz  
 Civil Engineers & Surveyors,  
 ST. PAUL, MINN.

Scale 100 Ft. Per Inch.

SURVEYED FOR  
 JAS. H. BURNS.