

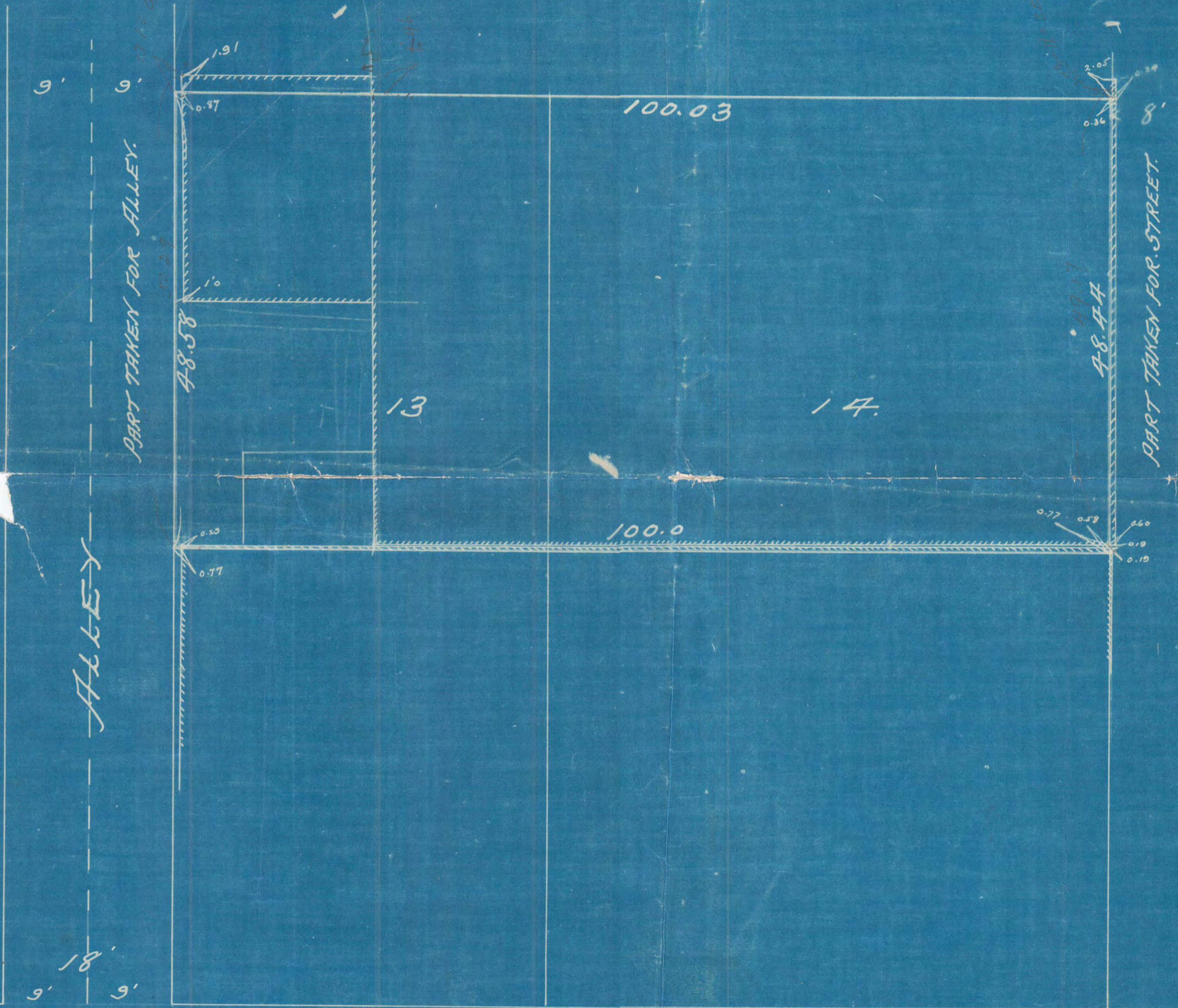
ST PAUL PROPER.

SURVEY OF

NLY 1/2 OF SLY 2/3 OF LOTS 13 AND 14 BL 17  
EXCEPT PART TAKEN FOR STREET AND ALLEY.

APR 5-1911

JENS PEDERSEN  
SURV



ALLEY

PART TAKEN FOR ALLEY.

PART TAKEN FOR STREET.

JACKSON ST.

E. FOURTH ST.

55

976  
051

1206