

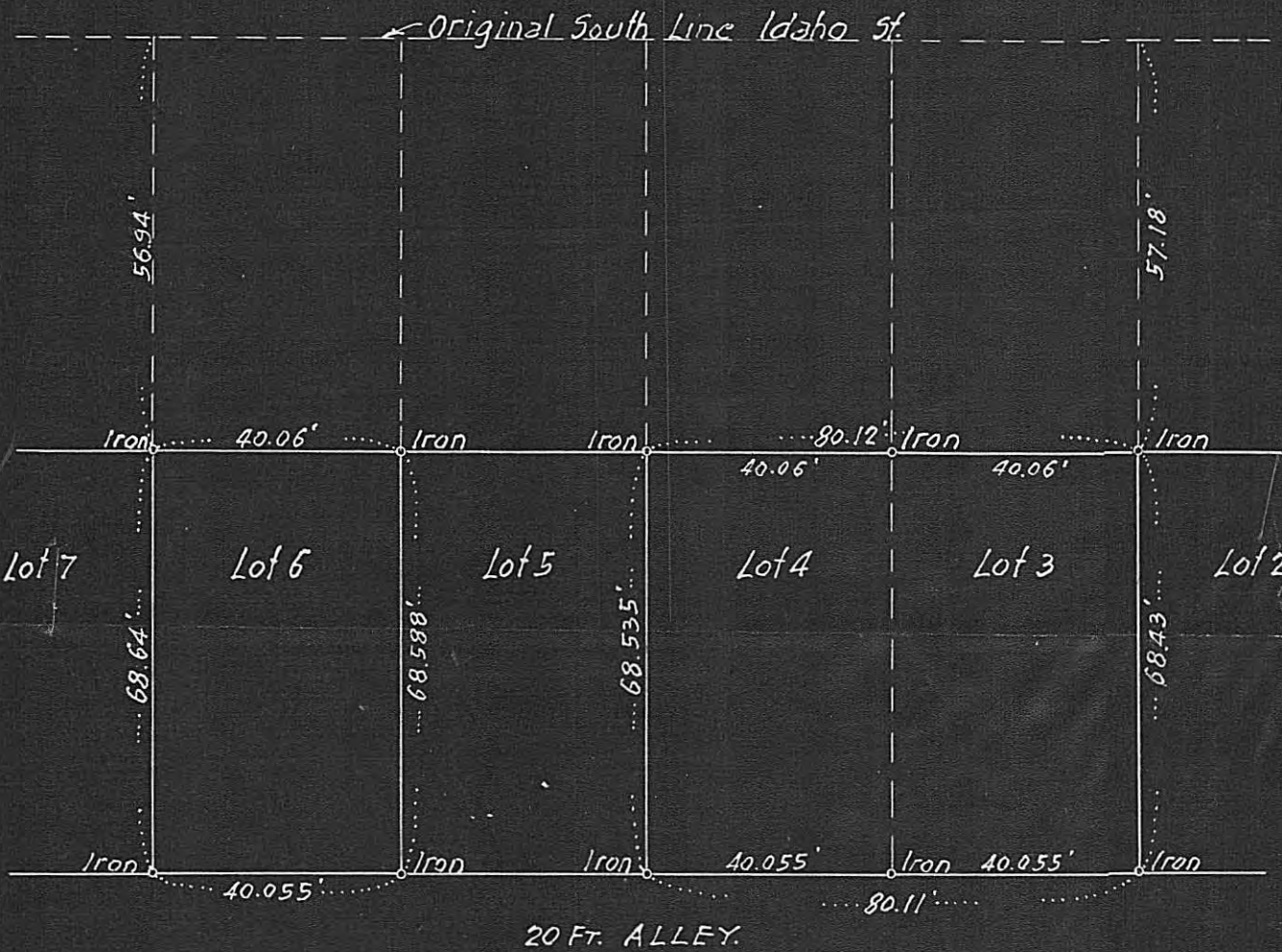
CERTIFICATE of SURVEY

F. J. ARMSTRONG
Civil Engineer and Surveyor
ST. PAUL, MINN.



WHEELLOCK

PARKWAY



Scale 1" = 20'

I HEREBY CERTIFY that on the 22nd day of May, A. D. 1947
I made a survey of the following described property, to-wit: Lots 3-4 and 6 Block 5;
Merrill's Division of Rice St. Villas; St. Paul, Minnesota

Subscribed and sworn to before me this
..... day of, 19.....

Notary Public.

and the map hereon shown is a true and correct map of said survey and that the improvements thereon
indicated are correctly shown.

My Commission Expires.....

F. J. Armstrong
Civil Engineer.