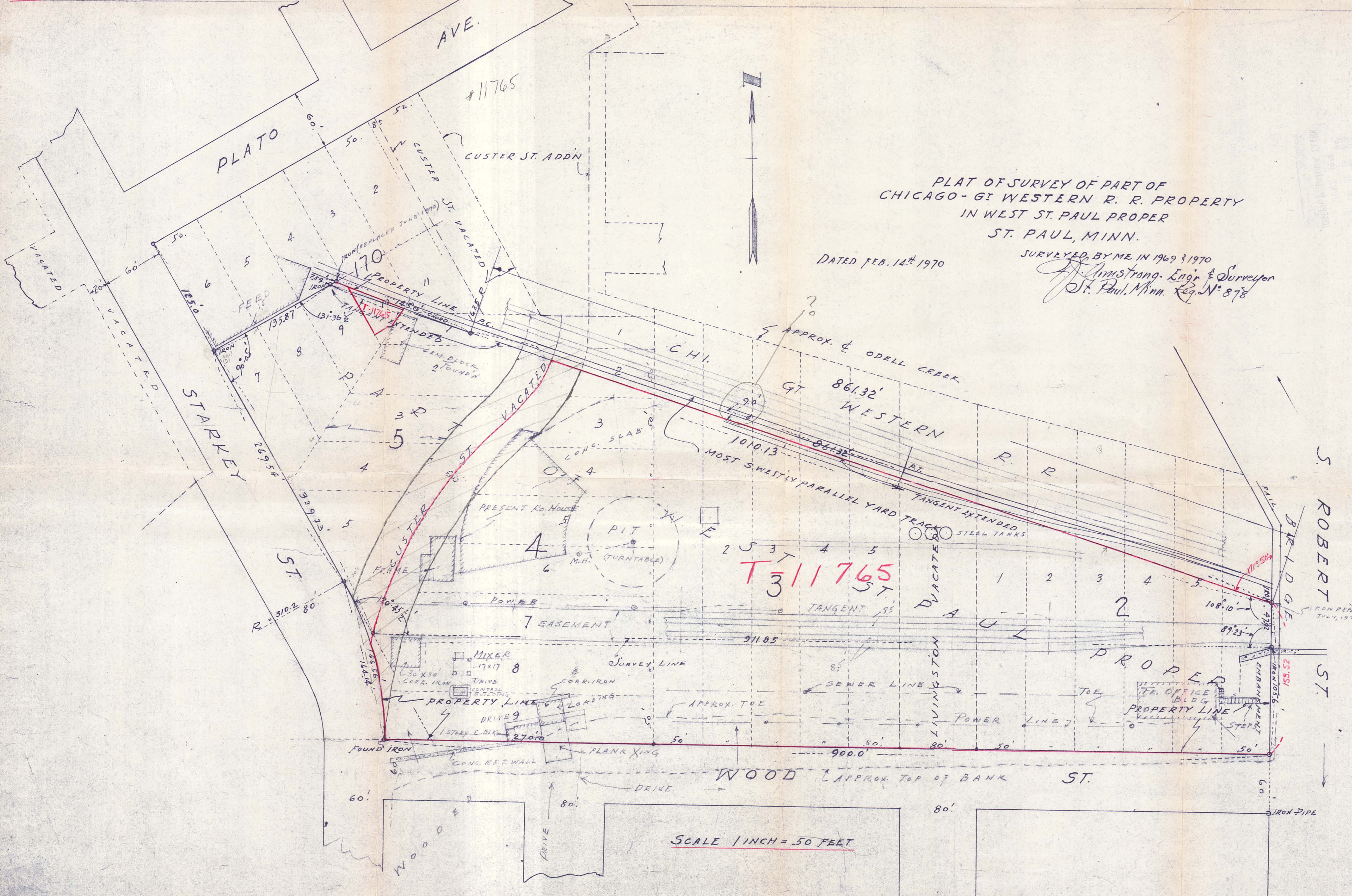


I hereby certify that this map is a true and correct map of part of Blocks 2, 3, 4, and 5 and 170, together with vacated Custer Street and vacated Livingston Avenue, all being part of West St. Paul Proper, which correctly delineates the former track easement as surveyed and as here resurveyed by me and designated Lot A.

Dated Aug 27<sup>th</sup> 1975

Surveyed by me 1970-1971-1975,  
*J. J. Armstrong*, Reg. Surveyor  
 St. Paul, Minn.

By *J. J. Armstrong*  
 JOSEPH J. ARMSTRONG  
 CLERK  
 SEP 29 1976  
 FILED  
 1975



PLAT OF SURVEY OF PART OF  
 CHICAGO-GT WESTERN R. R. PROPERTY  
 IN WEST ST. PAUL PROPER  
 ST. PAUL, MINN.

DATED FEB. 14<sup>th</sup> 1970

SURVEYED BY ME IN 1969 & 1970  
*J. Armstrong, Engr & Surveyor*  
 St. Paul, Minn. Reg. No. 878

**T 311765**

105.6  
 47.92  
 153.52

SCALE 1 INCH = 50 FEET