

PLAT OF SURVEY

by
JOHN R. TURPIN
 REGISTERED LAND SURVEYOR
 ST. PAUL, MINNESOTA

11/685

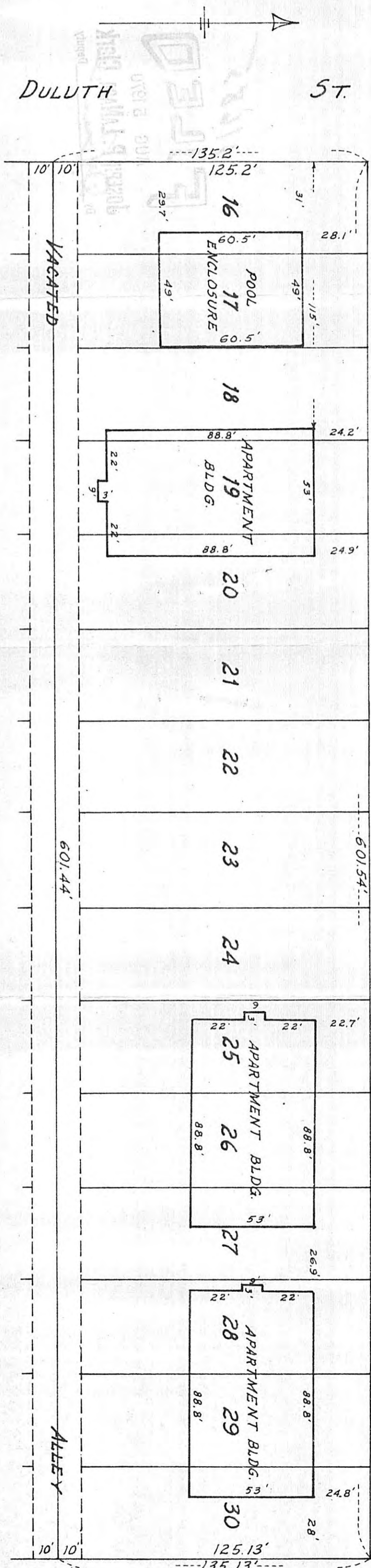
I hereby certify that this is a true and correct plat of a survey of the land shown and described hereon, and that any monuments or markers indicated hereon have been placed as shown, and that any improvements or physical conditions indicated hereon are as shown.

Surveyed November 26, 1969

John R. Turpin

Plat Scale - 1 in. = 40 ft.

Description - Lots 16, 17, 18, 19, 20, 21, 22, 23, 24, 25, 26, 27, 28, 29 and 30, Block 11, Clifton Addition.



COPE AVE.
 2266 Duluth

Plat A EX

AVE.

ATLANTIC ST.

2271
 2275