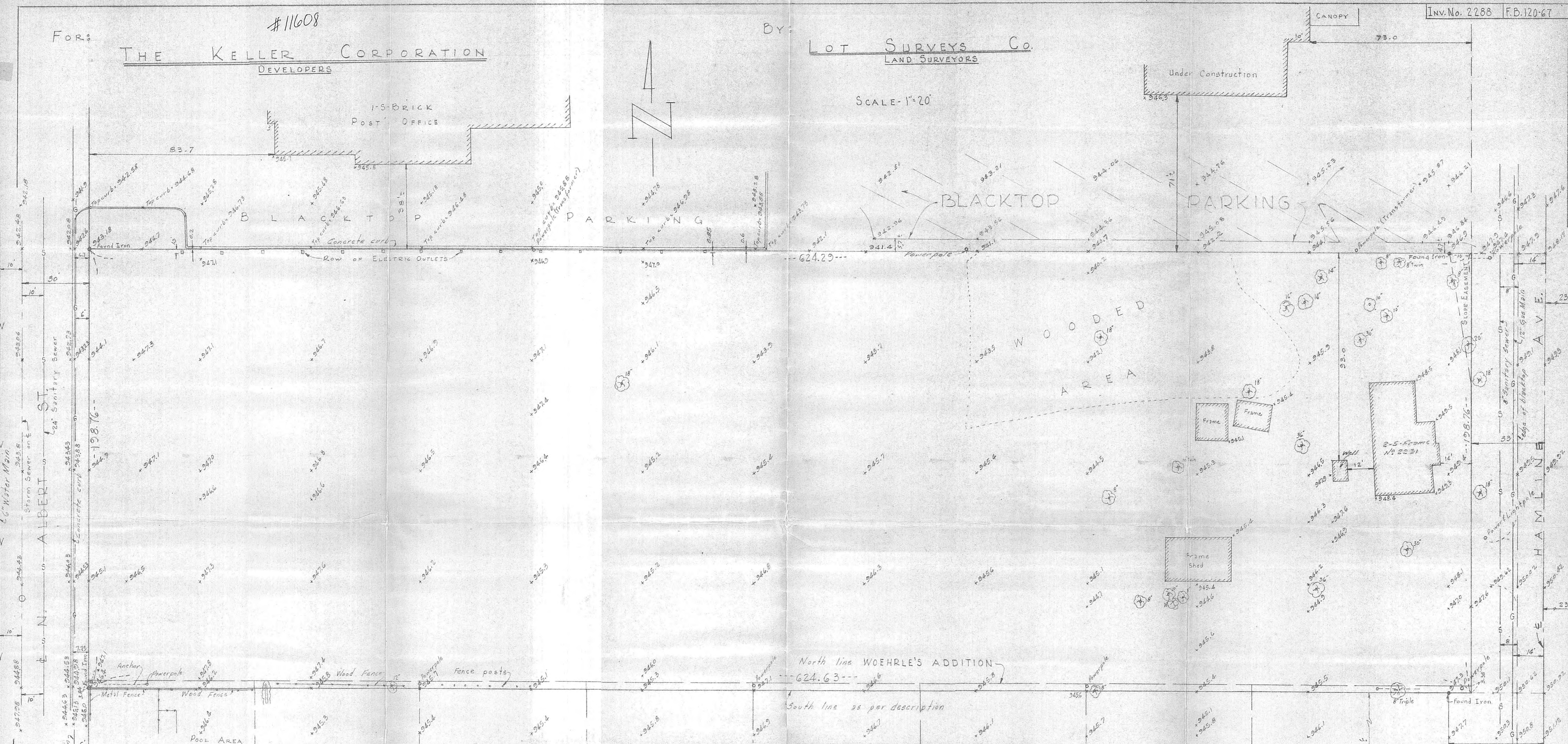


FOR: THE KELLER CORPORATION DEVELOPERS

BY: LOT SURVEYS Co. LAND SURVEYORS

SCALE - 1" = 20'



DESCRIPTION: The South 2 acres of the Northeast 1/4 of the Southeast 1/4 of the Southwest 1/4 and the North 1 acre of the Southeast 1/4 of the Southeast 1/4 of the Southwest 1/4 of Section 10, Township 29, Range 23, Ramsey County, Minnesota subject to Hamline Avenue.

Sanitary Sewer: Information from Roseville Engineering Department.

Water: Information from Roseville Engineering Department.

Gas: Information from Northern States Power Company.

Electric Power: 3 phase 120-240 volt available along Hamline Avenue. Northern States Power.

Grade Change: Grades on Hamline opposite North and South lines of property are to be approximately the same. The grade opposite the center of the property will be approximately 0.5 feet lower. (Minnesota Highway Department)

Benchmark: Southwest corner top of base of Pure Oil sign Southeast corner of Hamline and County Road B. Elevation - 955.62

Due to the conflict in descriptions along the South line as shown, we would recommend that the South line be determined by judicial action.

We hereby certify that this is a true and correct representation of a survey of the above described land and the location of all buildings and visible encroachments, if any, from or on said land.

March 8, 1968. Raymond A. Brasch  
Minnesota Registration No. 6743

REVISED JUNE 19, 1968

#11608

FOR:

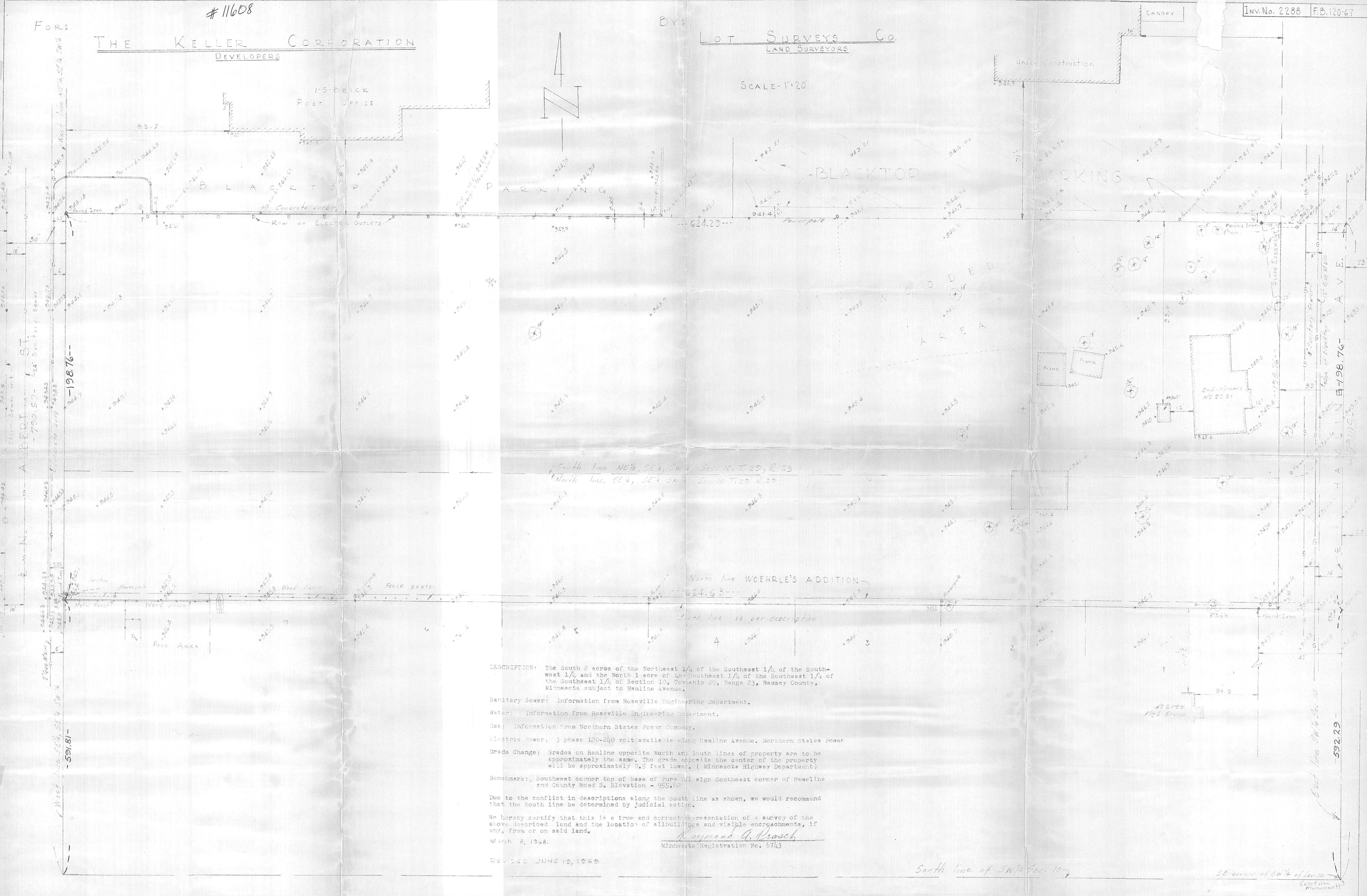
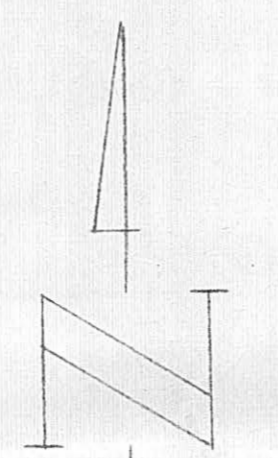
THE KELLER CORPORATION  
DEVELOPERS

BY:

LOT SURVEYS Co.  
LAND SURVEYORS

Inv. No. 2288 F.B. 120-67

SCALE - 1" = 20'



South line NE 1/4, SE 1/4, SW 1/4 Sec. 10, T. 23, R. 23  
North line SE 1/4, SE 1/4 SW 1/4 Sec. 10 T. 23 R. 23

North line WOEHRLE'S ADDITION  
624.63

South line as per description  
4 3 2

DESCRIPTION: The South 2 acres of the Northeast 1/4 of the Southeast 1/4 of the South-west 1/4 and the North 1 acre of the Southeast 1/4 of the Southeast 1/4 of the Southeast 1/4 of Section 10, Township 23, Range 23, Ramsey County, Minnesota subject to Hamline Avenue.

Sanitary Sewer: Information from Roseville Engineering Department.

Water: Information from Roseville Engineering Department.

Gas: Information from Northern States Power Company.

Electric Power: 3 phase 120-240 volt available along Hamline Avenue. Northern States Power.

Grade Change: Grades on Hamline opposite North and South lines of property are to be approximately the same. The grade opposite the center of the property will be approximately 0.5 feet lower. (Minnesota Highway Department)

Benchmark: Southwest corner top of base of Pura Oil sign Southeast corner of Hamline and County Road B. Elevation - 955.62

Due to the conflict in descriptions along the South line as shown, we would recommend that the South line be determined by judicial action.

We hereby certify that this is a true and correct representation of a survey of the above described land and the location of all buildings and visible encroachments, if any, from or on said land.

March 8, 1968.

*Kuyman G. Krasch*  
Minnesota Registration No. 6743

REVISED JUNE 12, 1968

South line of SW 1/4 Sec. 10

SE corner of SW 1/4 of Sec. 10  
(Cast Iron Monument)

East line SW 1/4 Sec. 10  
-592.29