

#11577

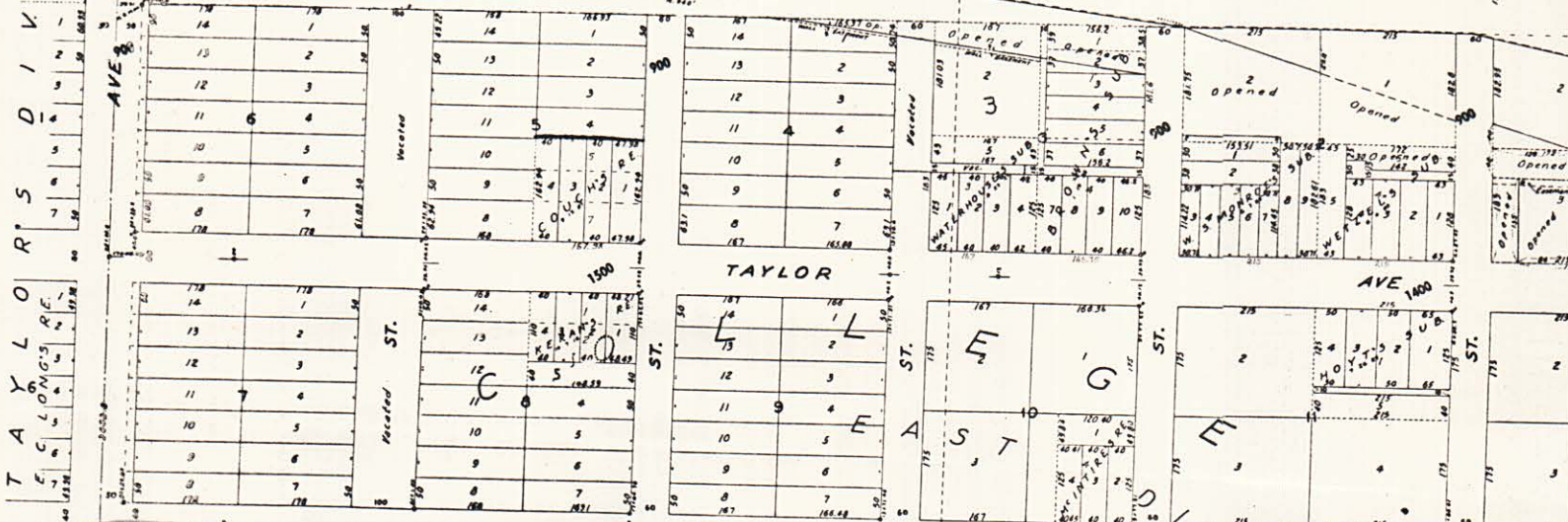
S. W. 1/4 Sec. 27—29—23

NORTHERN PACIFIC RY CO

23

GREAT MINNESOTA BY PRODU
NORTHERN RY.

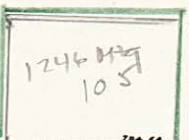
OPENED
NORTHERN ROUTE



22

HAMLIN UNIVERSITY

*name = named
Mtg.*



W. ENGLEWOOD 1500



53 NO

HAMM

7630.4

60

6126	60	9219	166.80
60	09	60	12
60	09	60	11
60	09	60	10
60	09	60	9
60	09	60	8
60	09	60	7
60	09	60	6
60	09	60	5
60	09	60	4
60	09	60	3
60	09	60	2
60	09	60	1
60	09	60	0

60	09	60	166.90
60	09	60	13
60	09	60	11
60	09	60	10
60	09	60	9
60	09	60	8
60	09	60	7
60	09	60	6
60	09	60	5
60	09	60	4
60	09	60	3
60	09	60	2
60	09	60	1
60	09	60	0

#11577

Hewitt
793.28

Stone Monument

40

the

Division

Stone-Test

STATE OF MINNESOTA,
County of Ramsey,

Office of the Registrar of Deeds
I, C. H. UENAU, Registrar of Deeds
for the County of Ramsey, do hereby certify
that the foregoing is a true and correct
copy of the original record of the
above described land.

HAMLIN PLAT

#11577

Hewitt

793 28

1650.4

60	6126	166.80	166.80	6134
		12	1	
	60	11	2	60
	60	10	3	60
	60	9	4	60
	60	8	5	60
	6126	7	6	6134
		166.88	166.88	

60	Ave.	166.80	166.80	40
		12	1	
	6136	11	2	6144
		10	3	60
		9	4	60
		8	5	60
	6136	7	6	6144
		166.88	166.88	

Wesley

80	6136	166.90	166.90	6144
		12	1	
	60	11	2	60
	60	10	3	60
	60	9	4	60
	60	8	5	60
	6136	7	6	6144
		166.97	166.97	

80	Ave.	166.90	166.90	80
		12	1	
	6136	11	2	6144
		10	3	60
		9	4	60
		8	5	60
	6136	7	6	6144
		166.97	166.97	

Ave.

60		166.98	166.98	6027
		12	1	
		11	2	
		10	3	
		9	4	
		8	5	
	6020	7	6	6027
		167.06	167.06	

Pascal

60	6028	166.98	166.98	6033
		12	1	
		11	2	58
		10	3	
		9	4	
		8	5	
	6028	7	6	6033
		167.06	167.06	

59	17898	6093	60
	12018	17018	

STATE OF MINNESOTA, } ss.
 County of Ramsey, }
 Office of the Register of Deeds
 P. C. H. JERU, Register of Deeds
 do hereby certify that the foregoing is a true and correct copy of the original plat and map as filed in my office on the 1st day of June 1880.

State of Minnesota } ss. J. S. J.
 County of Ramsey }
 in the month of June A.D. 1880, a
 University of Minnesota" I survey
 the South West Quarter and
 of the South-West Quarter of
 (29) Range twenty three (23) in
 and streets, and the annex
 showing such survey, and divide
 planted and fixed in the gr
 of Minnesota" under any blis
 the words "stone monuments."

State of Minnesota } ss. The tru
 County of Ramsey }
 a corporation by its President
 that it caused the real est
 South West Quarter and the
 South West Quarter of Section
 twenty three (23) in said Co
 Lots and Blocks and street
 caused said plat to be made
 "Hamline" and the streets as
 use.
 On Testimony Whereof, the
 was hereunto set its name
 eight day of June A.D. 1880
 In presence of
 William Forten }
 Harold L. Ellis }

State of Minnesota } ss. J. W.
 County of Ramsey }
 said county hereby certify
 me personally came L.