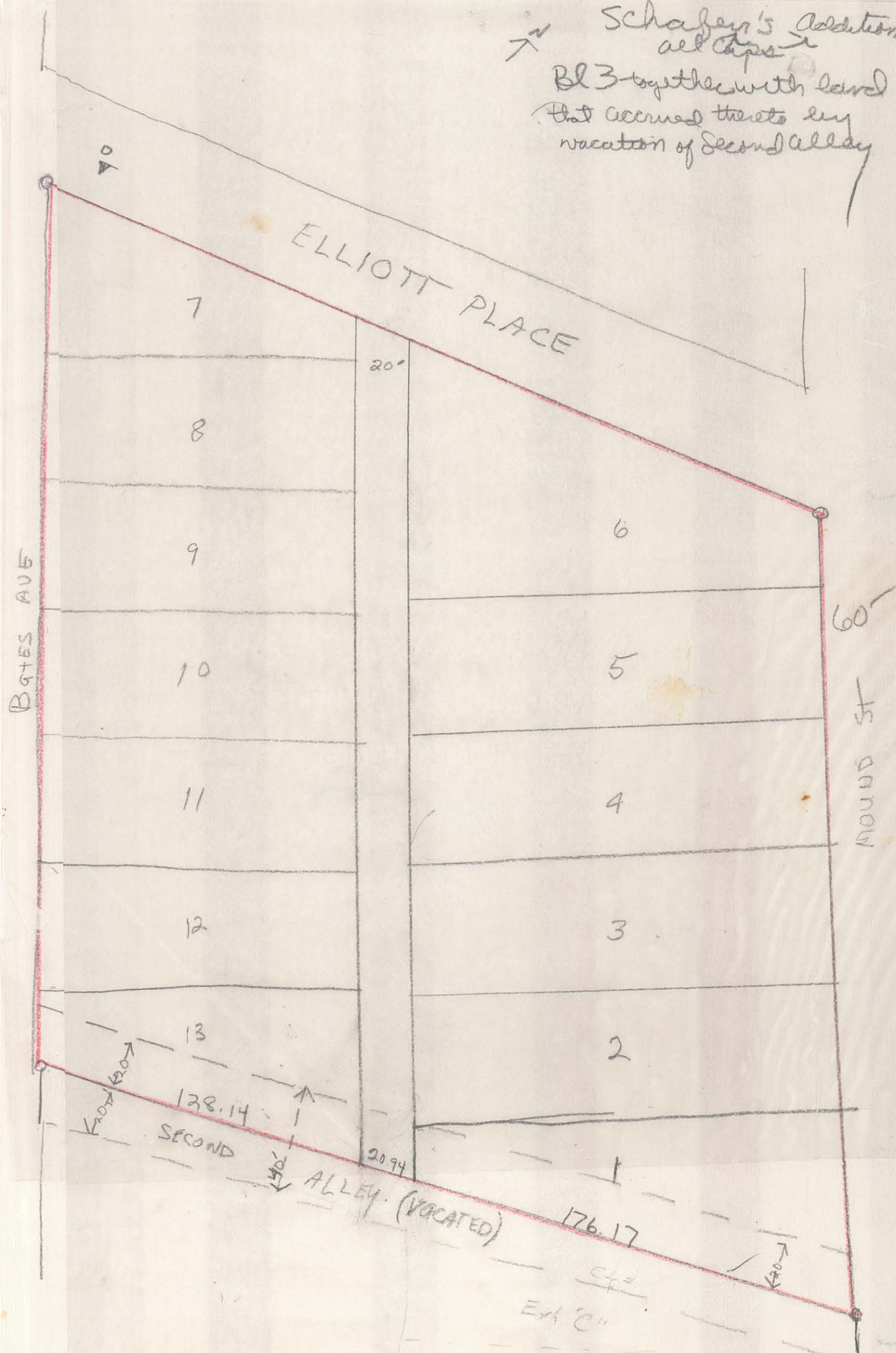


Schafer's Addition  
 all lots  
 Bl 3 together with land  
 that accrued thereto by  
 vacation of Second Alley



# DIV A MUNICIPAL SANITARY DISTRICT SEWER ALIGNMENT MAP

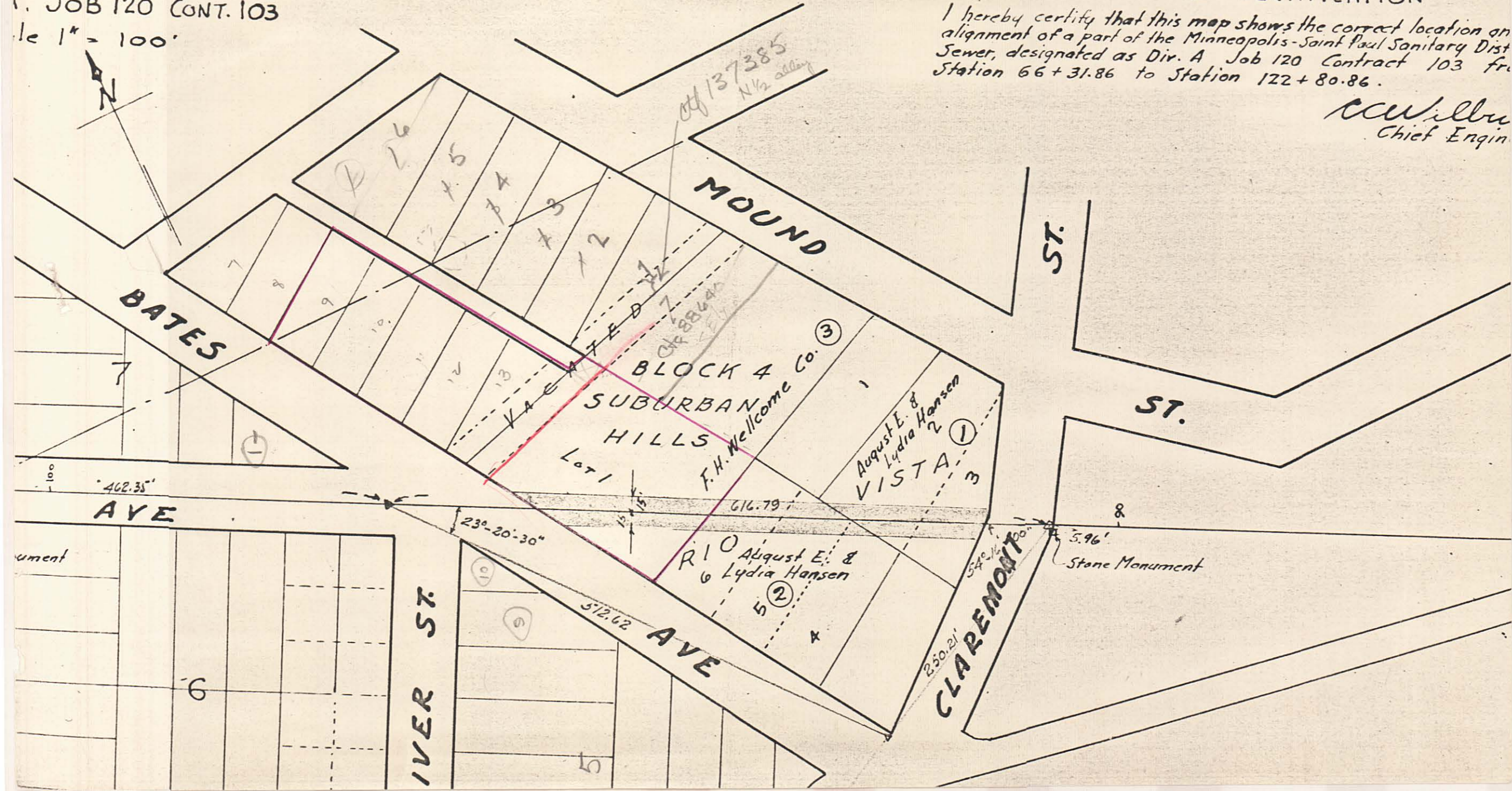
Job 120 CONT. 103

Scale 1" = 100'

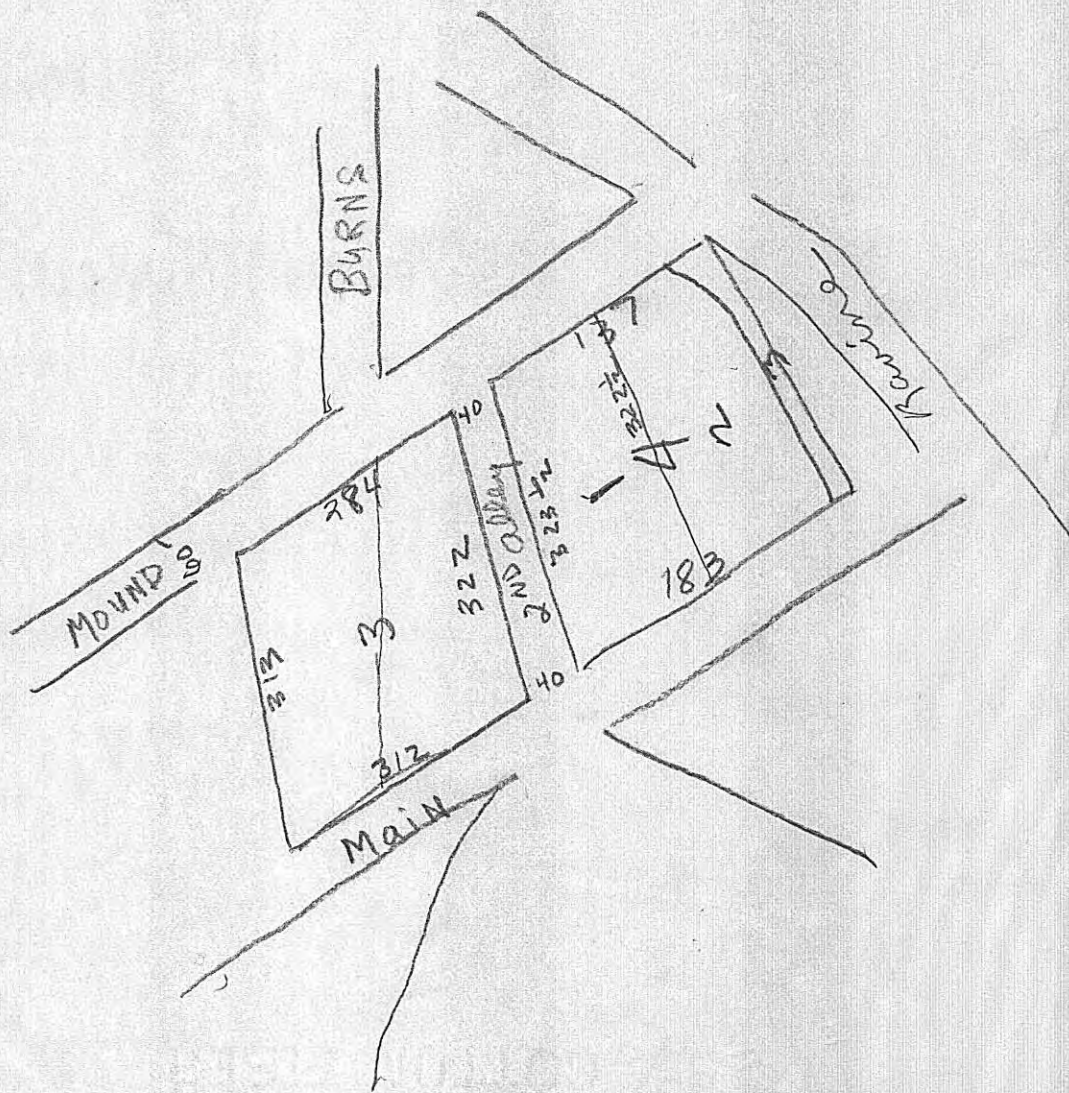


ENGINEER'S CERTIFICATION  
I hereby certify that this map shows the correct location and alignment of a part of the Minneapolis-Saint Paul Sanitary District Sewer, designated as Div. A Job 120 Contract 103 from Station 66+31.86 to Station 122+80.86.

*W. Wilbur*  
Chief Engineer



"Suburban Hills"



# PLAT OF SURVEY

JOHN J. RYAN CO.

Donald G. Johnson and Murrel A. Johnson  
Bates Avenue  
St. Paul, Minnesota

Lots 9 to 13, inclusive, SCHAFER'S ADDITION.

That part of Lot 1, Block 4, Suburban Hills, and that part of the southerly half of adjoining 2<sup>nd</sup> Alley, vacated, lying westerly of the extension southeasterly of the southwesterly line of Lot 1, SCHAFER'S ADDITION

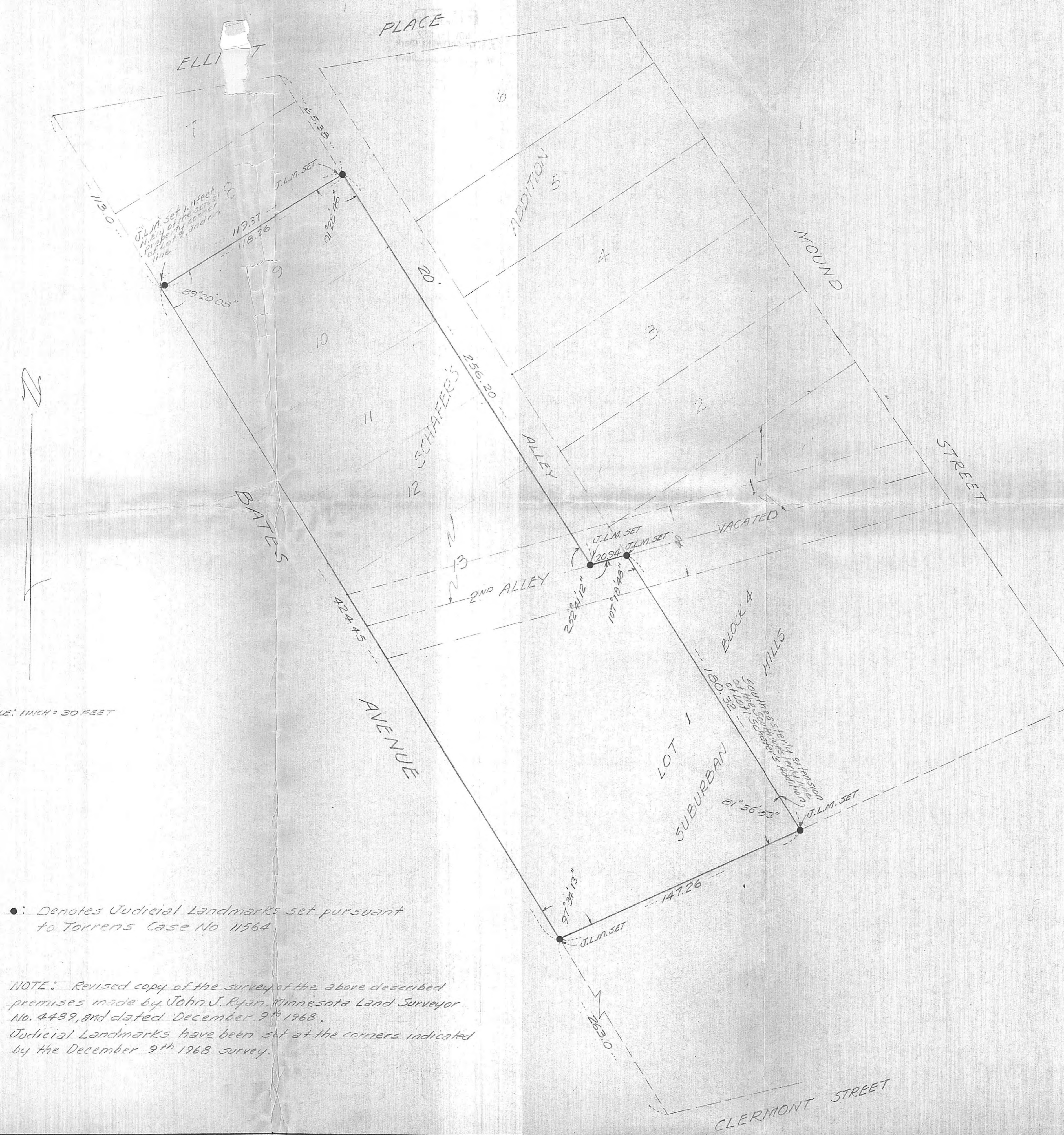
"I hereby certify that on the 2<sup>nd</sup> day of November, pursuant to Order of the District Court, Second Judicial District, I placed judicial landmarks as indicated on the above property, each of such landmarks consisting of regulation cast-iron monuments with the words 'JUDICIAL LANDMARKS' in raised letters on the top."

*J. Gary Ryan*  
MINN. REG. NO. 11529

• Denotes Judicial Landmarks set pursuant to Torrens Case No. 11564

NOTE: Revised copy of the survey of the above described premises made by John J. Ryan, Minnesota Land Surveyor No. 4489, and dated December 9<sup>th</sup> 1968. Judicial Landmarks have been set at the corners indicated by the December 9<sup>th</sup> 1968 survey.

DRAWN BY	DATE	REVISIONS	DATE
CHECKED BY	11-2-68		
APPROVED BY			
SCALE:	1" = 30'		
TITLE	DRAWING NUMBER		



SCALE: 1 INCH = 30 FEET

0164-40217B