

#11524

RIVERVIEW INDUSTRIAL  
Part between Avenue, to be, etc., etc.  
VACATION  
City of St. Paul  
Dept. of Public Works  
May 24, 1966  
Scale: 1" = 50'



JUNE 15, 1966

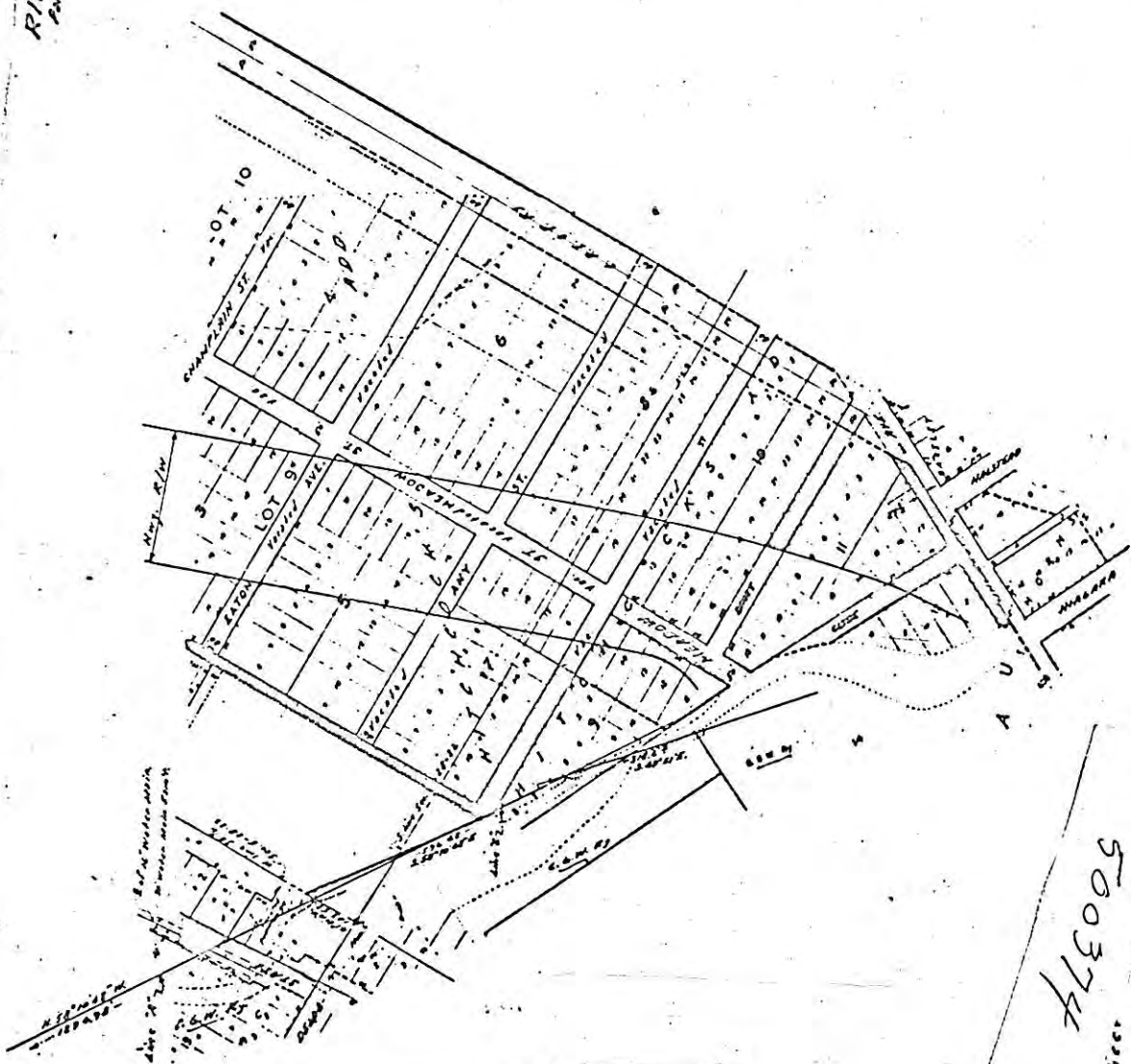
500374

TRIAL PARK  
VACATION  
No. 1057



# 11524

RIVERVIEW INDUSTRIAL  
Part between Anderson, Cassell, and 19th Sts.  
VACATION  
City of St. Paul  
Plat of Park Blocks  
May 24, 1916  
Scale: 1"=500'



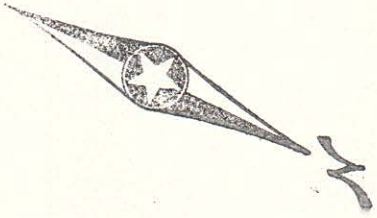
JUNE 15, 1966

500374  
SHEET

RIVERVIEW INDUSTRIAL  
PARK VACATION  
No. 1857.

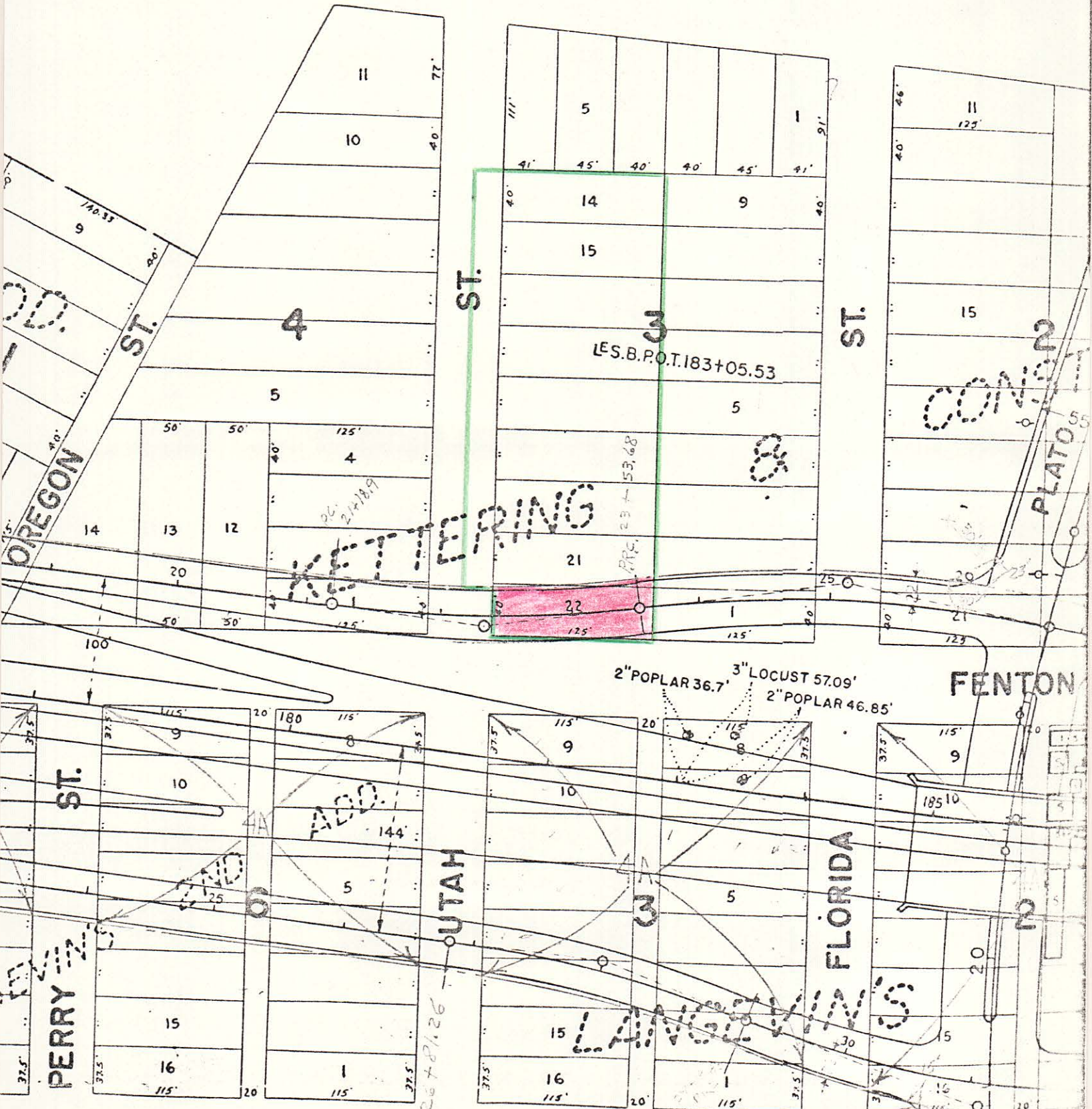
RIVERVIEW INDUSTRIAL PARK

# 11524



L<sup>W</sup> F.R.P. 1.22+36.88  
Δ 14° 05' 12" Lt.  
D 06° 00'  
T 117.98'  
L 234.78'  
P.C. 21+18.9  
P.R.C. 23+53.68

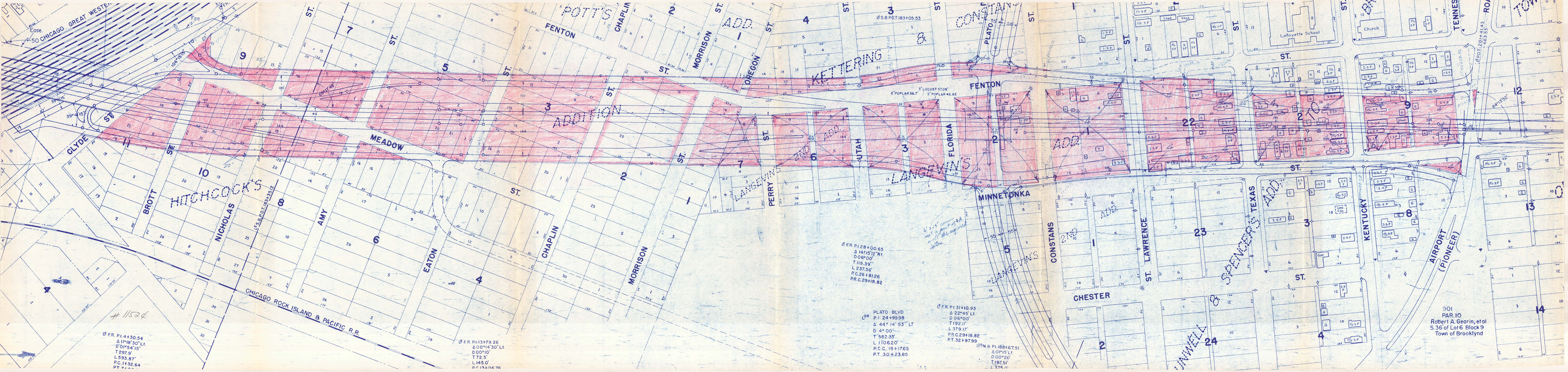
L<sup>W</sup> F.R.P. 1.25+14.62  
Δ 19° 08' Rt.  
D 06° 00'  
T 160.94'  
L 318.89'  
P.R.C. 23+53.68  
P.T. 26+72.57



LETTERING

Exhibit "A"

MINNETONKA



# 11524

LEFR. P.1.4+30.54  
Δ 11°18'30" Lt.  
D 01°54'15"  
T 297.9'  
L 593.87'  
P.C. 1+32.64  
P.T. 7+00

CHICAGO ROCK ISLAND & PACIFIC R.R.

LEFR. P.1.3+79.26  
Δ 00°14'30" Lt.  
D 00°10'  
T 72.5'  
L 145.0'  
P.C. 13+06.76

LEFR. P.1.28+00.65  
Δ 14°15'12" Rt.  
D 06°00'  
T 119.39'  
L 237.56'  
P.C. 26+81.26  
P.T. 29+18.82

OR  
PLATO BLVD  
P.1. 24+99.98  
Δ 44° 14' 53" Lt  
D 4° 00'  
T 582.33'  
L 1106.20'  
P.C.C. 19+1765  
P.T. 30+23.85

LEFR. P.1.31+10.93  
Δ 22°45' Lt.  
D 06°00'  
T 192.11'  
L 379.17'  
P.C. 29+18.82  
P.T. 32+97.99

ORN B. P.1.88+67.51  
Δ 01°15' Lt.  
D 00°20'  
T 187.51'  
L 375.0'

901  
PAR. 10  
Robert A. Georin, et al  
S.36' of Lot 6 Block 9  
Town of Brooklynd