

T-11503

PLAT OF SURVEY

by

R. C. WOLFGRAM

REGISTERED LAND SURVEYOR

ST. PAUL, MINNESOTA

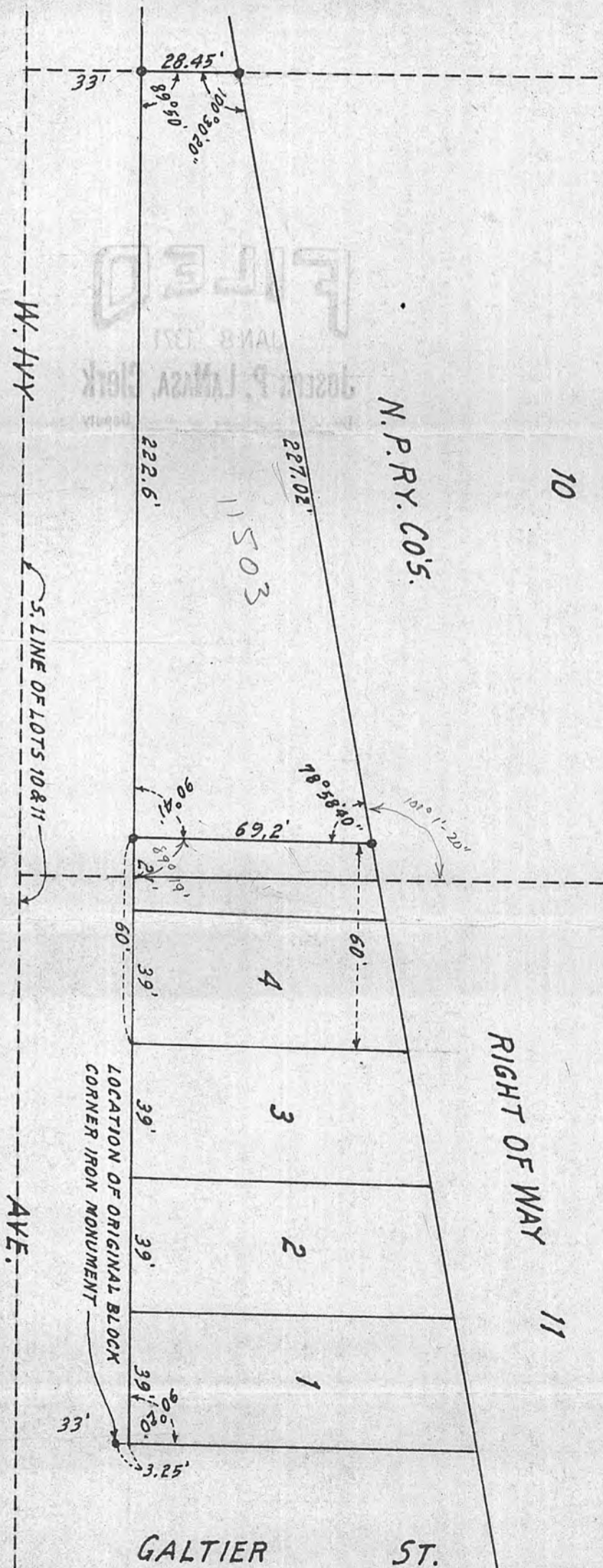
I hereby certify that this is a true and correct plat of a survey of the land shown and described hereon, and that any monuments or markers indicated hereon have been placed as shown, and that any improvements or physical conditions indicated hereon are as shown.

Surveyed Aug., 3, 1967.

R. C. Wolfram

Plat Scale - 1 in. = 40 ft. • Indicates Iron Mont.

Description - That part of Lot 10, Walcott's Addition to Cottage Homes, lying Southerly of the Northern Pacific Railway Company's right of way and lying West of a line running parallel with and distant 60 feet West of the East line of Lot 4, Block 7, Rice Street Villas Subdivision of Lots 8, 10, 12, 13 and the East 275 feet of Lot 11, Walcott's Addition to Cottage Homes, except the South 33 feet thereof.



FILED
JAN 8 1967
JOS. P. LAMSA, CLERK

179-58-70
148-58-80
1010-1-20