

Dunsmuir Avenue
9-16

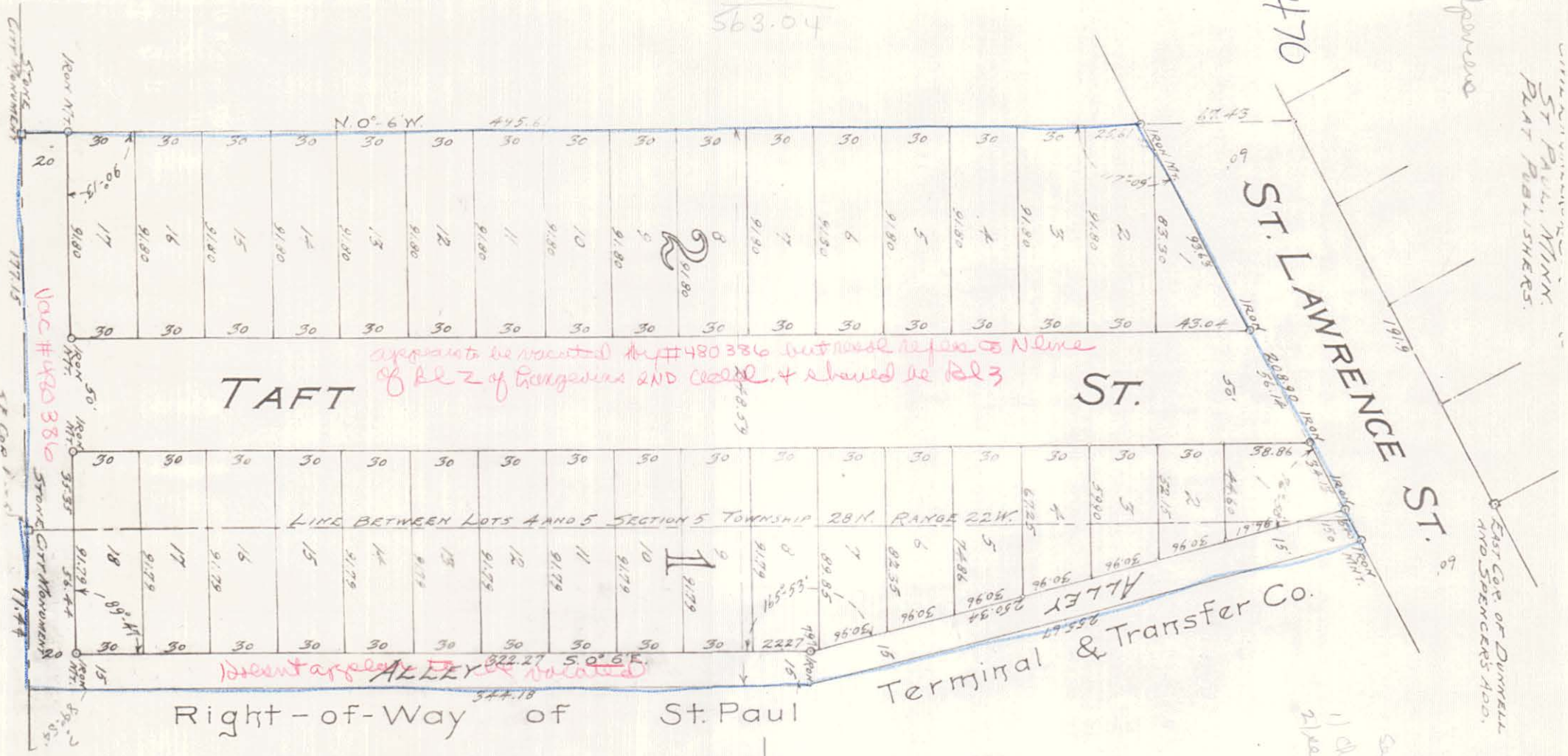
ST PAUL MINN.
PLAT PUBLISHERS.

EAST COR. OF DUNSMuir
AND SPENCERS ADD.

#11470

495.61
67.43
563.04

150.57
34.58
177.15



apartments to be vacated by #480386 but none refer to N line
of Bl 2 of Longview and closed. + should be Bl 3

Recent alley vacated

See 1152 for index
11 Quad 11470
2100 950 11470 for 84NW
99B