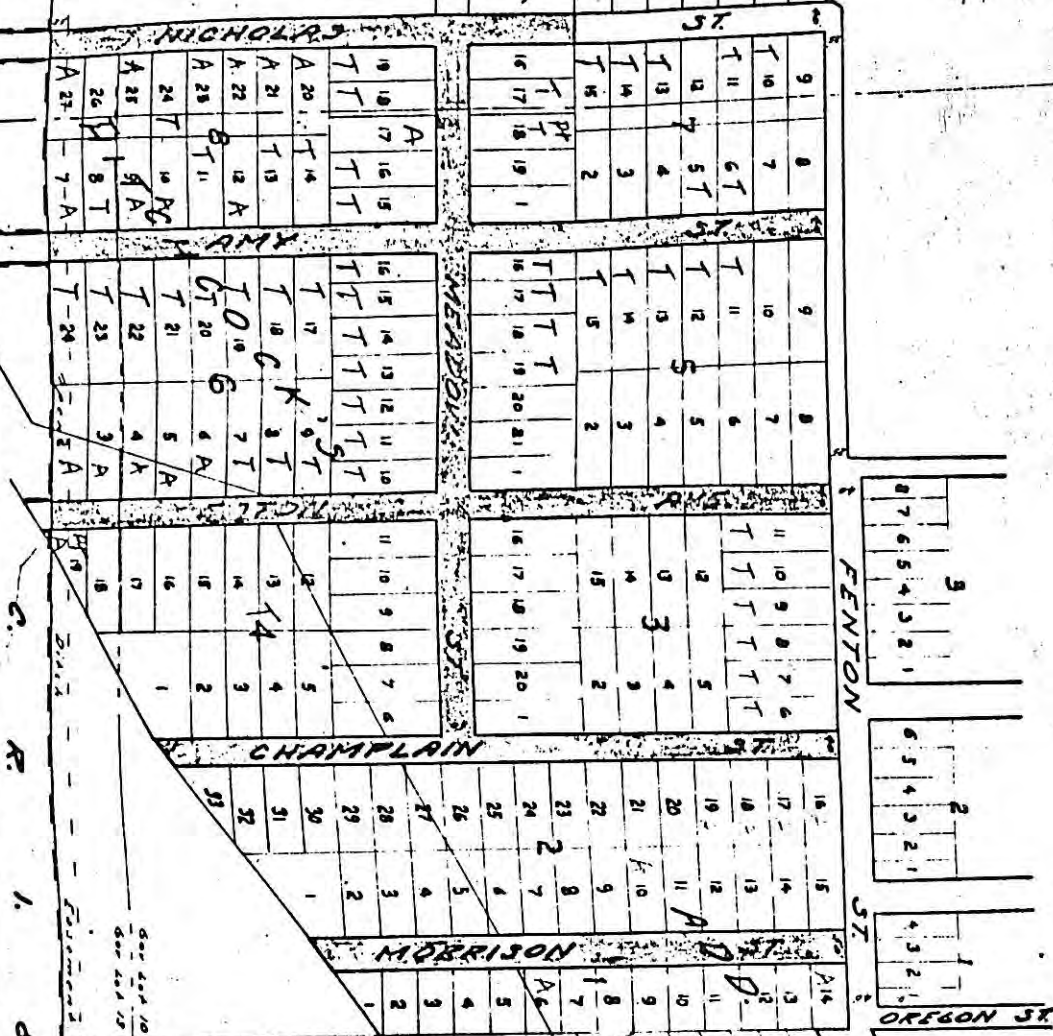


VICTIM
COURT
NO. 174

Hitchcock's Add.

#11466

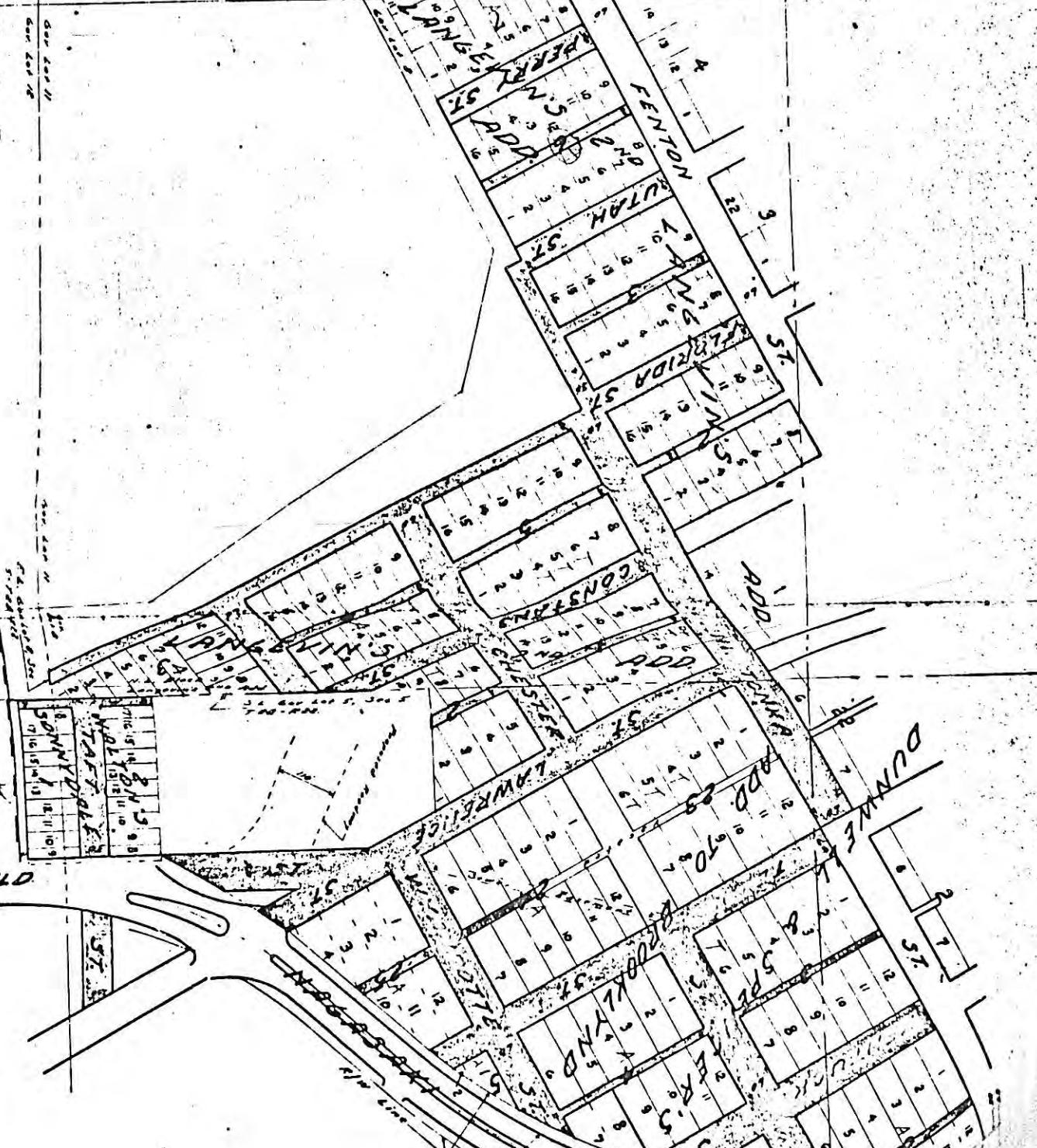


C. R. I. S. P. RY.

See lot 10
See lot 11
See lot 12
See lot 13
See lot 14

See lot 15
See lot 16
See lot 17
See lot 18
See lot 19

BAYFIELD

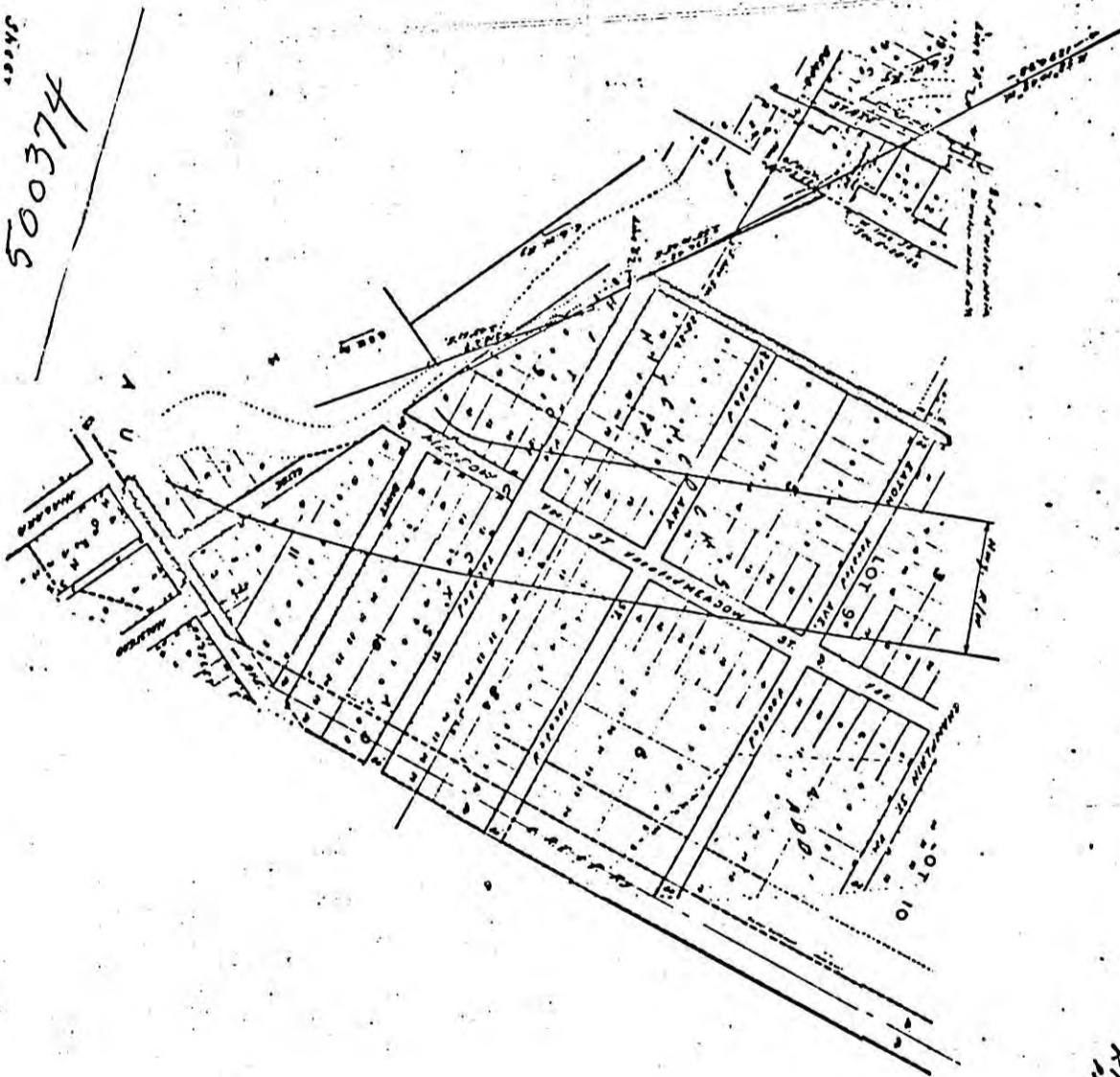


#11466

RIVERVIEW INDUSTRIAL PARK
VICADITION
S. W. 1/4

Sheet
500374

JUNE 15, 1966



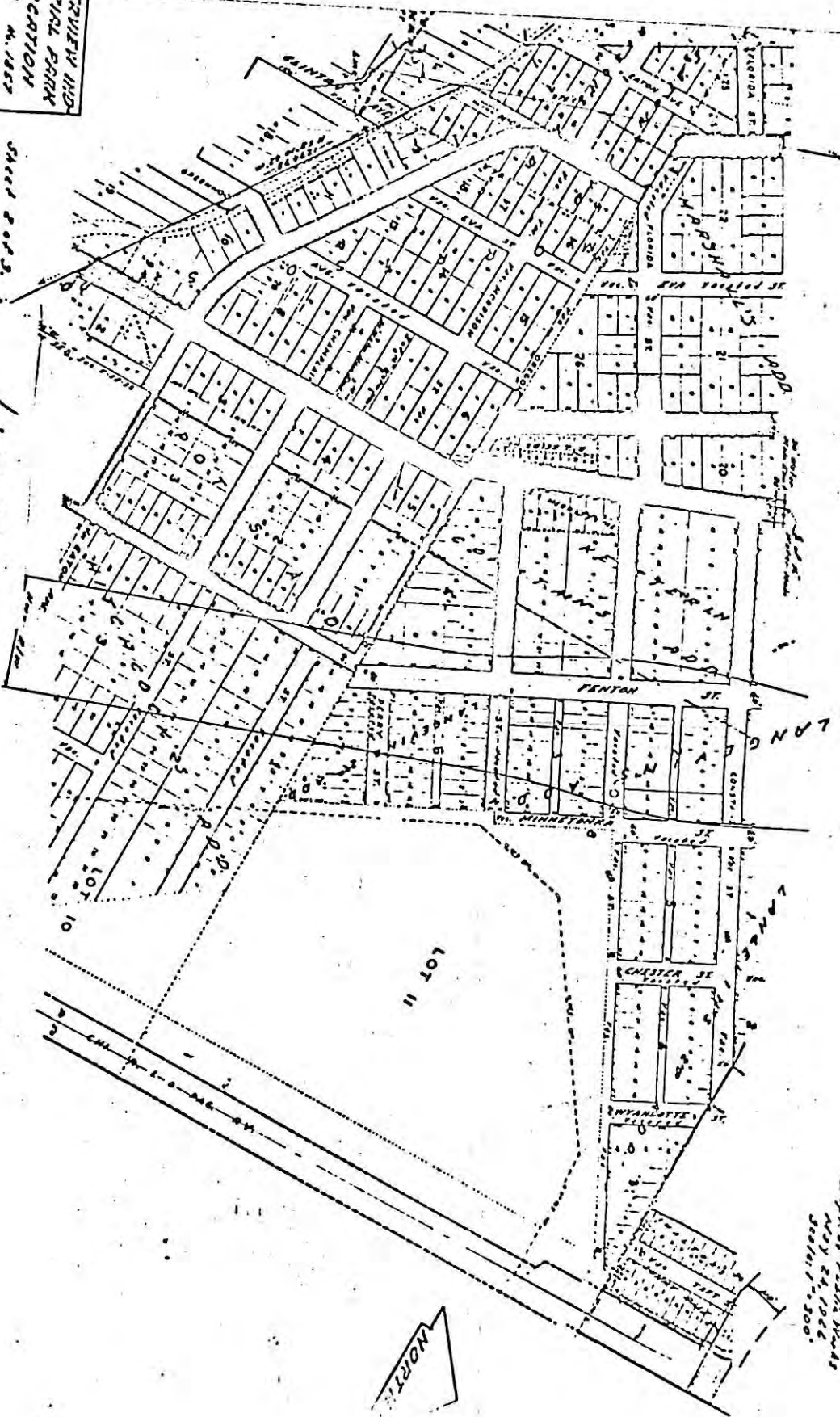
RIVERVIEW INDUSTRIAL PARK
 and between Adams, Ross, and 5th Sts.
 VICADITION
 City of St. Paul
 Dept. of Public Works
 May 24, 1966
 Scale: 1" = 100'

#11466

RIVERVIEW INDUSTRIAL
LOCATION
MAY 24, 1966

500374

JUNE 15, 1966



RIVERVIEW INDUSTRIAL
 AND BUSINESS DISTRICT, PHASE 4, C.D. 1961
 LOCATION
 CITY OF ST. PAUL
 DEPT. OF PUBLIC WORKS
 MAY 24, 1966
 SHEET 1 OF 200



11466

TRUCKING
INDUSTRIAL
LOCATION
M. 1117

500374

JUNE 15, 1966



RIVERVIEW INDUSTRIAL
 AND BUSINESS DISTRICT
 VACATION
 City of St. Paul
 Div. of Public Works
 May 24, 1966
 Scale: 1/4" = 100'