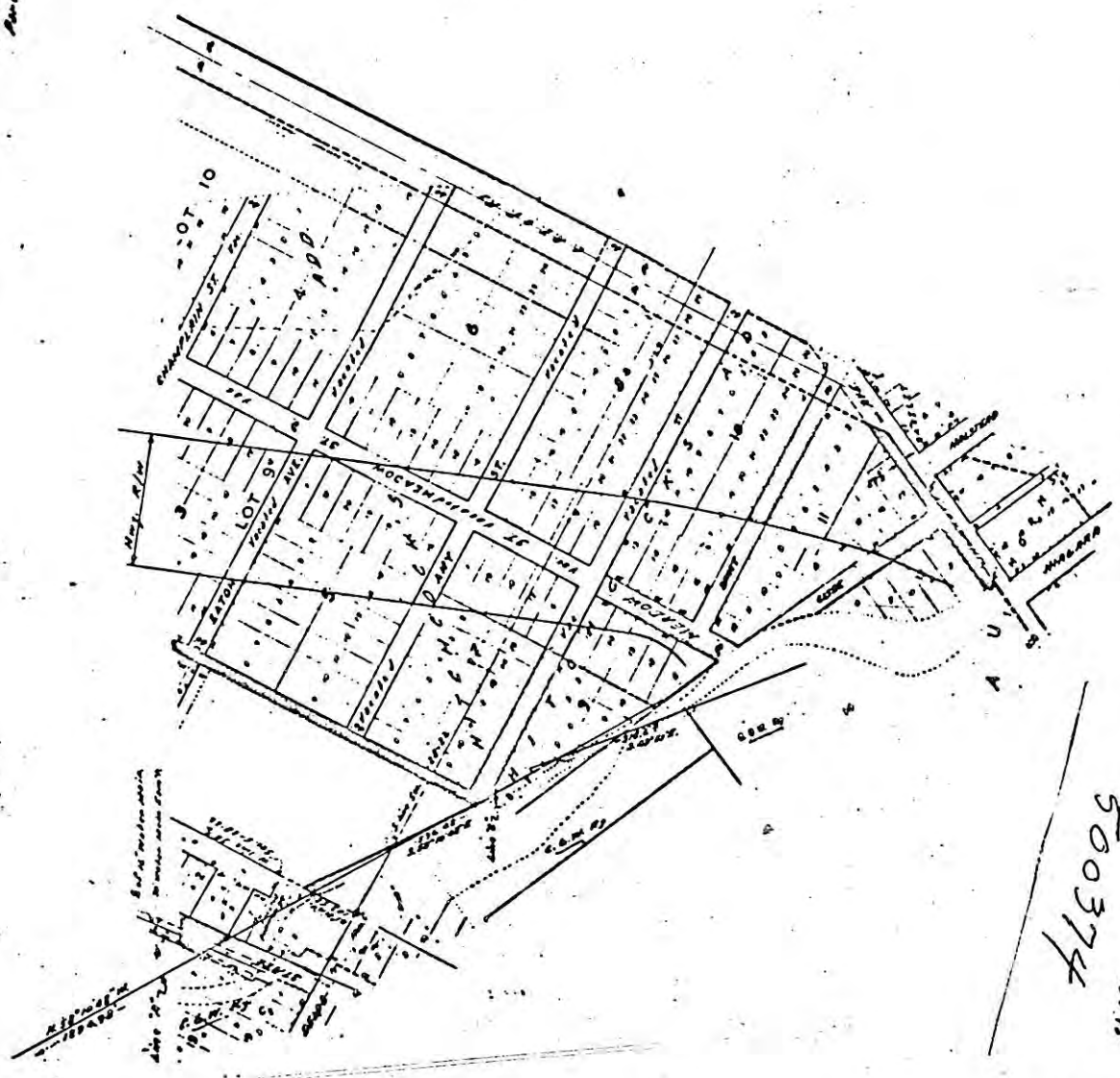


**RIVERVIEW INDUSTRIAL  
TRAIL PARK VACATION**

Map between Auburn, Mass., & Cambridge, Mass.  
City of St Paul  
Dept. of Public Works  
May 24, 1956  
Scale: 1" = 300'



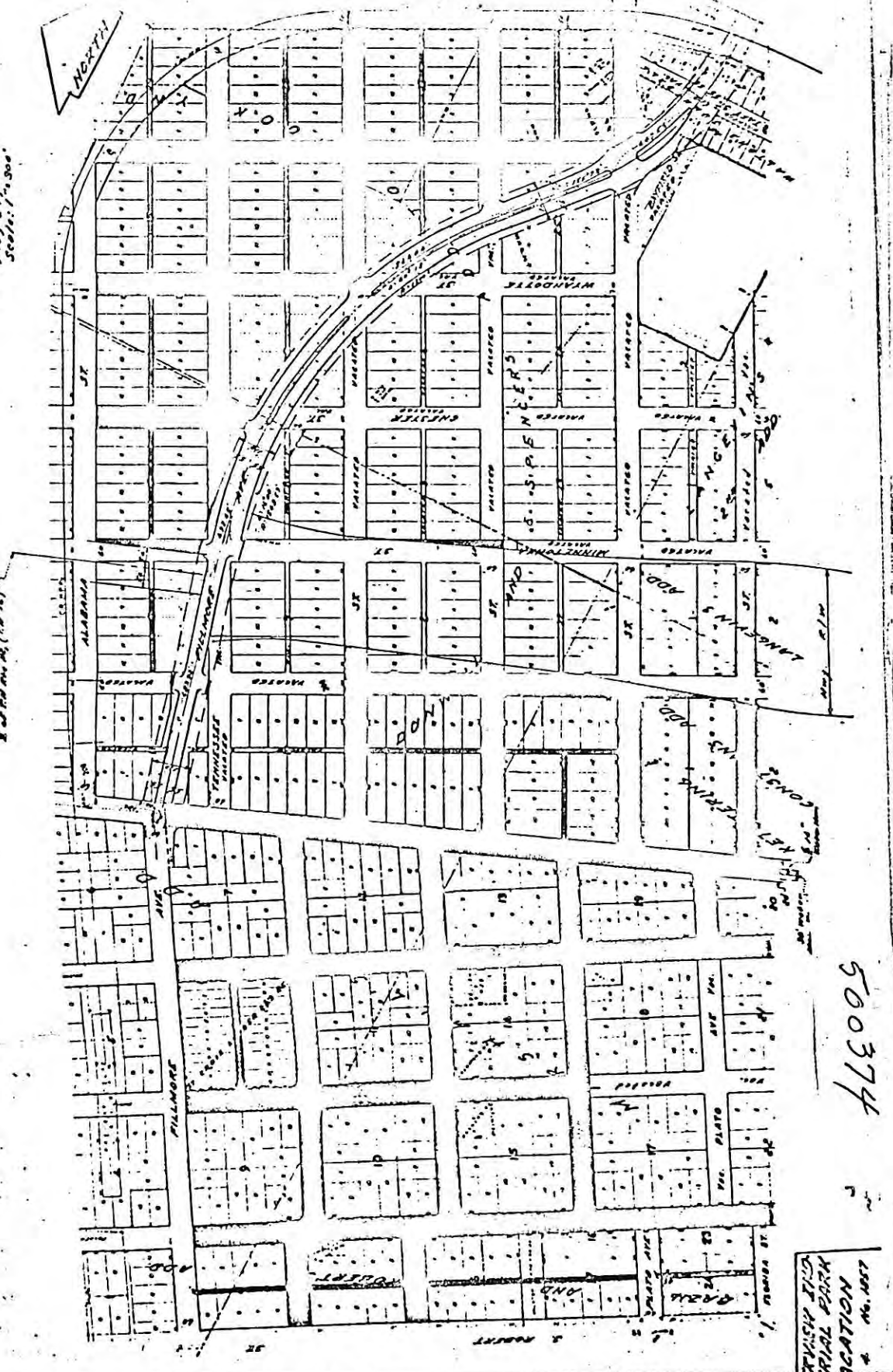
# 11465

RIVERVIEW INDUSTRIAL PARK VACATION  
NO. 1957

500374  
SHEET

JUNE 15, 1966

**RIVERVIEW INDUSTRIAL VACATION**  
 Part between Alabama, Wheeler, Chestnut, & Millmore  
 City of St. Paul  
 Dept. of Public Works  
 May 24, 1966  
 Scale: 1" = 500'



JUNE 15, 1966

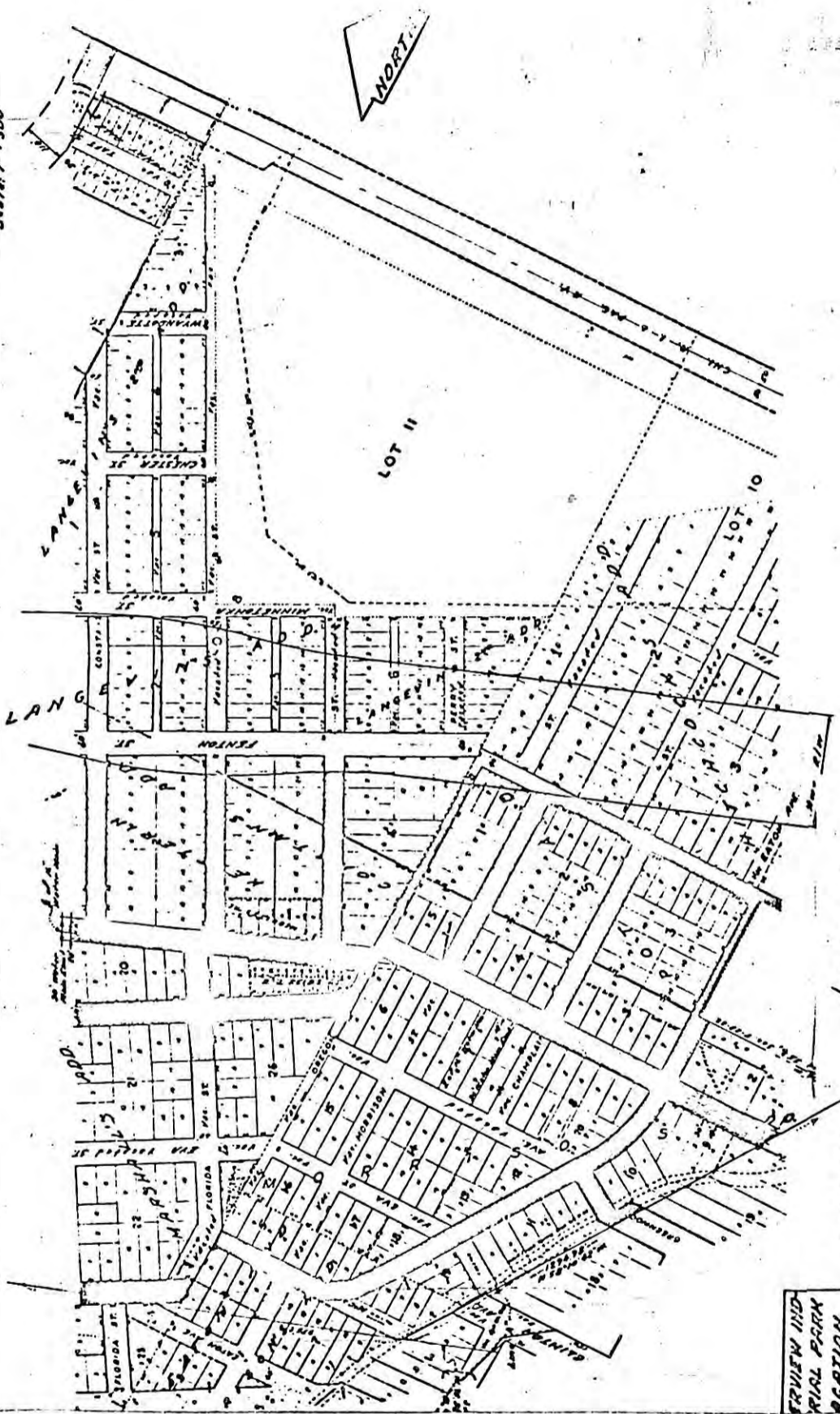
500374

RIVERVIEW INDUSTRIAL PARK VACATION No. 101

# 11465

**RIVERVIEW INDUSTRIAL VACATION**

City of St. Paul  
Dept. of Public Works  
May 24, 1966  
Scale: 1" = 300'



JUNE 15, 1966

500374

Sheet 2 of 3

RIVERVIEW INDUSTRIAL PARK VACATION  
S. H. 1857

# 11465