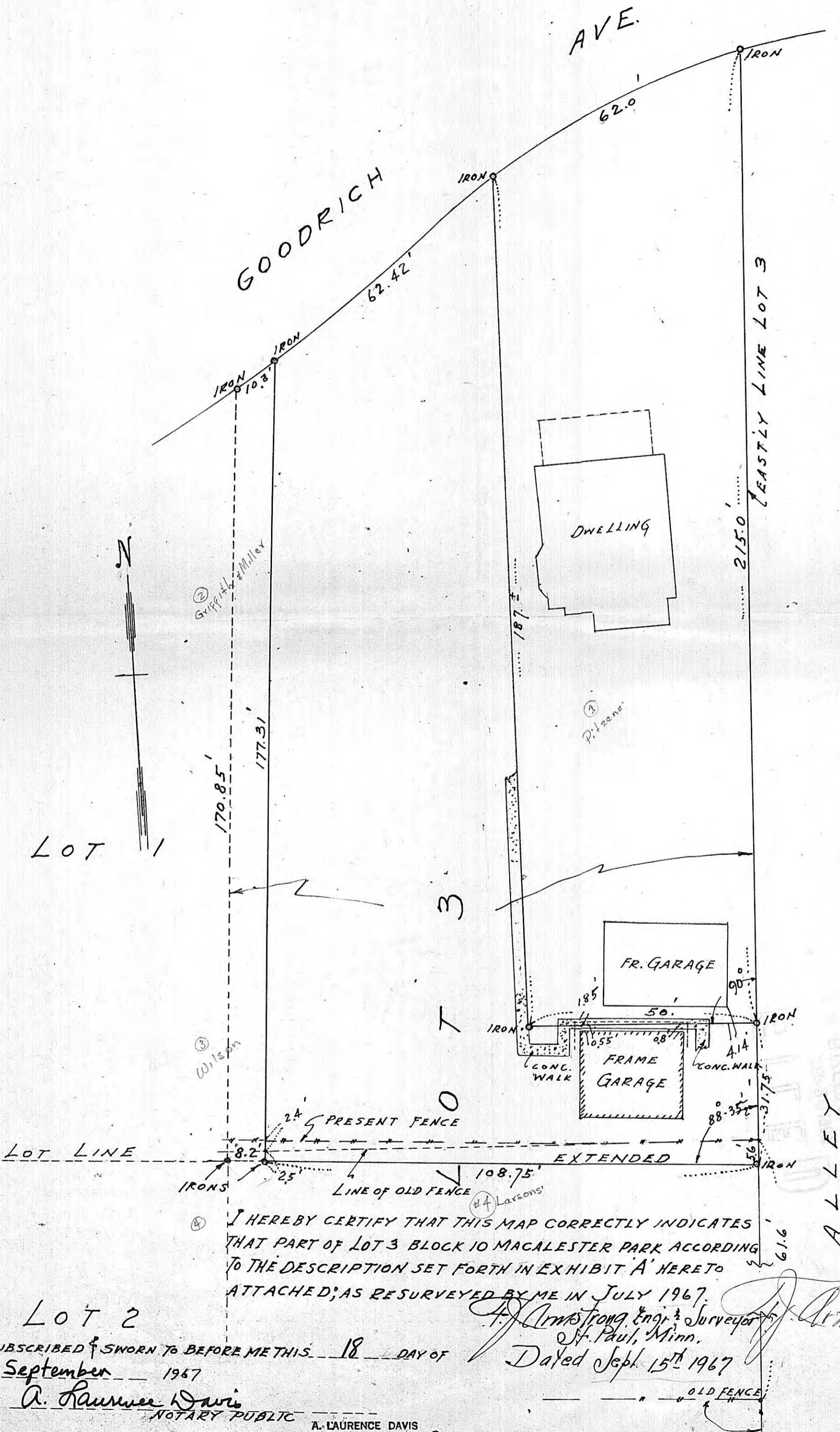


file 11448
roll 387



Scale 20 ft. per inch

179-59-60
88-35-30
91-24-30

I HEREBY CERTIFY THAT THIS MAP CORRECTLY INDICATES THAT PART OF LOT 3 BLOCK 10 MACALESTER PARK ACCORDING TO THE DESCRIPTION SET FORTH IN EXHIBIT A' HERETO ATTACHED, AS RESURVEYED BY ME IN JULY 1967.

F. J. Armstrong
F. J. Armstrong, Eng. & Surveyor
St. Paul, Minn.
Dated Sept. 15th 1967

Lot 2
SUBSCRIBED & SWORN TO BEFORE ME THIS 18 DAY OF
September 1967

A. Laurence Davis
NOTARY PUBLIC

MY COMMISSION EXPIRES
A. LAURENCE DAVIS
Notary Public, Ramsey County, Minn.
My Commission Expires Mar. 22, 1973.