

PLAT OF SURVEY

#11389

by  
R. C. WOLFGRAM  
REGISTERED LAND SURVEYOR  
ST. PAUL, MINNESOTA

I hereby certify that this is a true and correct plat of a survey of the land shown and described hereon, and that any monuments or markers indicated hereon have been placed as shown, and that any improvements or physical conditions indicated hereon are as shown.

Surveyed March 26, 1968

*R. C. Wolfgram*

Plat Scale - 1 in. = 10 ft. • Indicates Iron Mont.

Description - Lot 4, Block 1, J. N. Rogers' 3rd Addition.

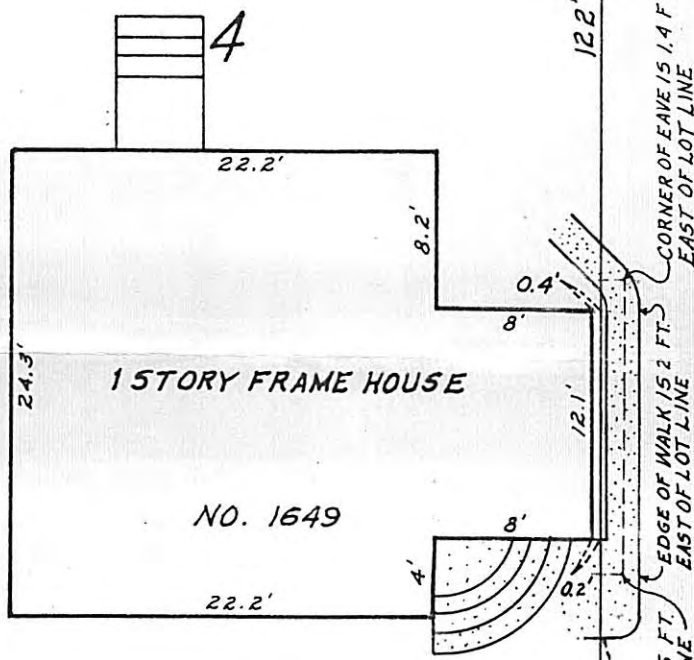
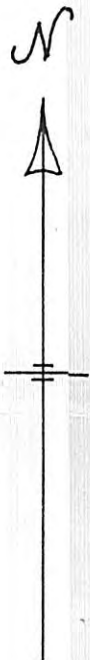
EXHIBIT A

ALLEY

16'

40'

W. LINE OF LOT 4 & W. LINE OF LOT 1, BLK. 3, CRUICKSHANK'S GARDEN LOTS



122'

40'

80' TO KENNARD ST.

Ross

Ave.

#11389

# CERTIFICATE of SURVEY

FRANKLYN ARMSTRONG CO.  
Civil Engineers and Surveyors  
ST. PAUL, MINN.

ALLEY

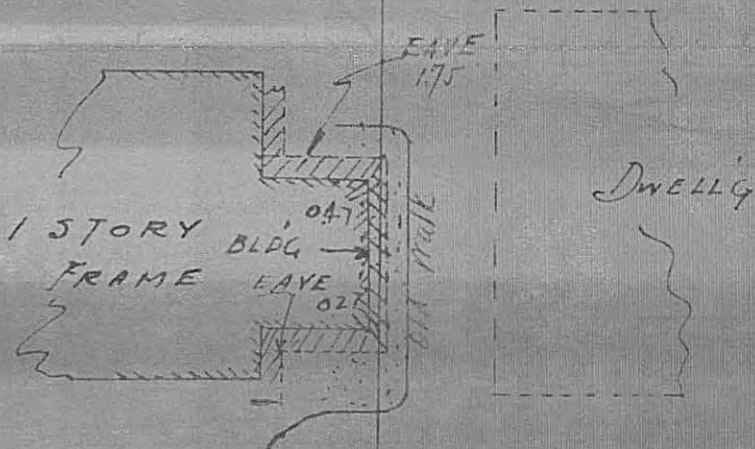


LOT 4

LOT 5

122.0

122.0



STEEL FENCE

40.2

40.0

ROSS

AVE.

Scale 1 inch = 15 feet

I HEREBY CERTIFY that on the 29<sup>th</sup> day of August A.D. 1966

I made a survey of the following described property to-wit: LOT 5 BLOCK 1  
J. N. ROGERS'S 3<sup>rd</sup> ADD'N  
ST. PAUL, MINN.

Subscribed and sworn to before me this \_\_\_\_\_ day of \_\_\_\_\_ 19\_\_\_\_

Notary Public.

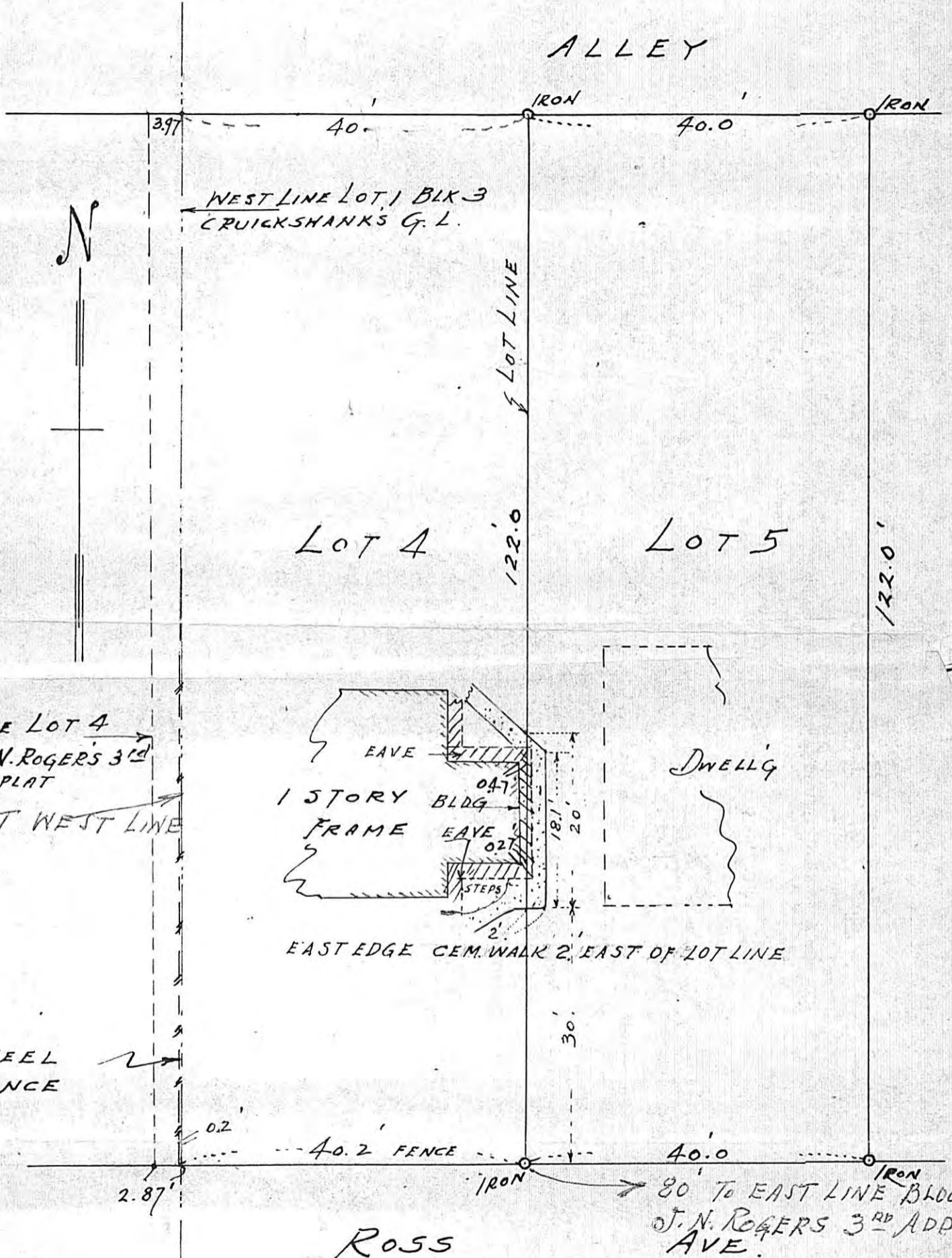
and the above map is a true and correct map of said survey and the improvements shown thereon are correctly indicated

My Commission Expires \_\_\_\_\_

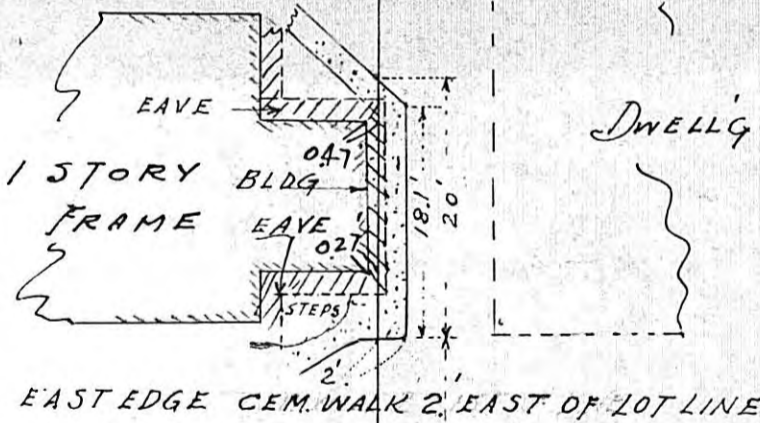
*F. J. Armstrong* Civil Engineer

# CERTIFICATE of SURVEY

FRANKLYN ARMSTRONG CO.  
Civil Engineers and Surveyors  
ST. PAUL, MINN.



WEST LINE LOT 4  
BLOCK 1 J.N. ROGERS 3<sup>RD</sup>  
PER ORIG. PLAT  
CORRECT WEST LINE  
LOT 4



STEEL FENCE

Scale 1 inch = 15 feet

I HEREBY CERTIFY that on the 29<sup>th</sup> day of AUGUST A. D. 1966  
I made a survey of the following described property, to-wit: LOT 5 BLOCK 1  
J. N. ROGERS 3<sup>RD</sup> ADD'N  
ST. PAUL, MINN.

Subscribed and sworn to before me this  
..... day of ....., 19.....

.....  
Notary Public.

My Commission Expires.....

and the above map is a true and correct map of said survey and the improvements shown thereon are correctly indicated  
Franklyn Armstrong Civil Engineer