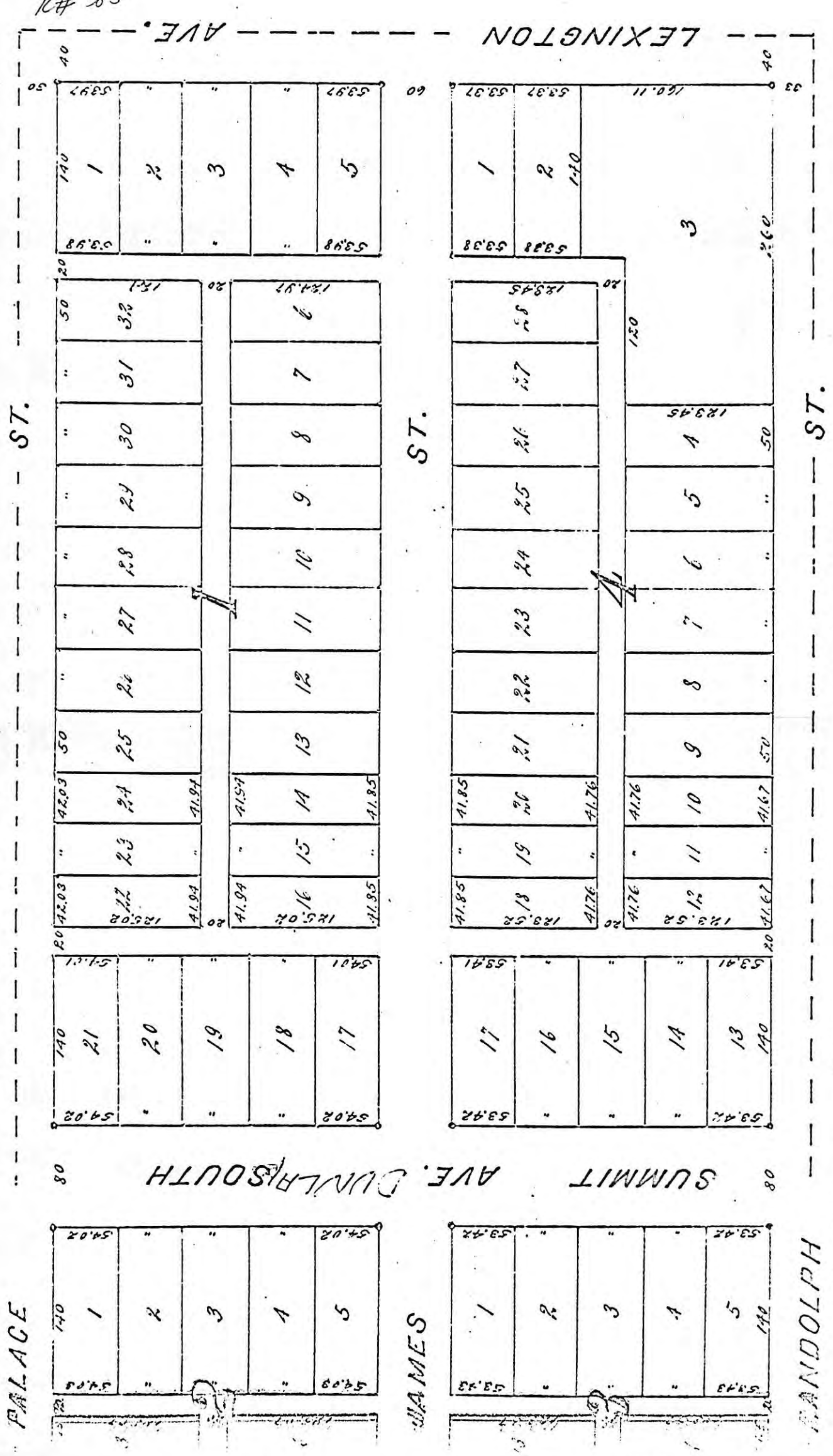


See map to Park 1447

11385
R# 385

Room 7 Union Block
ST. PAUL, MINN.
PLAT PUBLISHERS



DESCRIPTION: THE S. 1/2 OF THE SE. 1/4 OF THE N.E. 1/4 OF SEC. 10, T. 28, R. 23 WEST OF THE 4TH P.M.

RANDOLPH

ST.

JAMES

ST.

PALACE

ST.

SUMMIT AVE. DUNLAP SOUTH

LEXINGTON AVE.