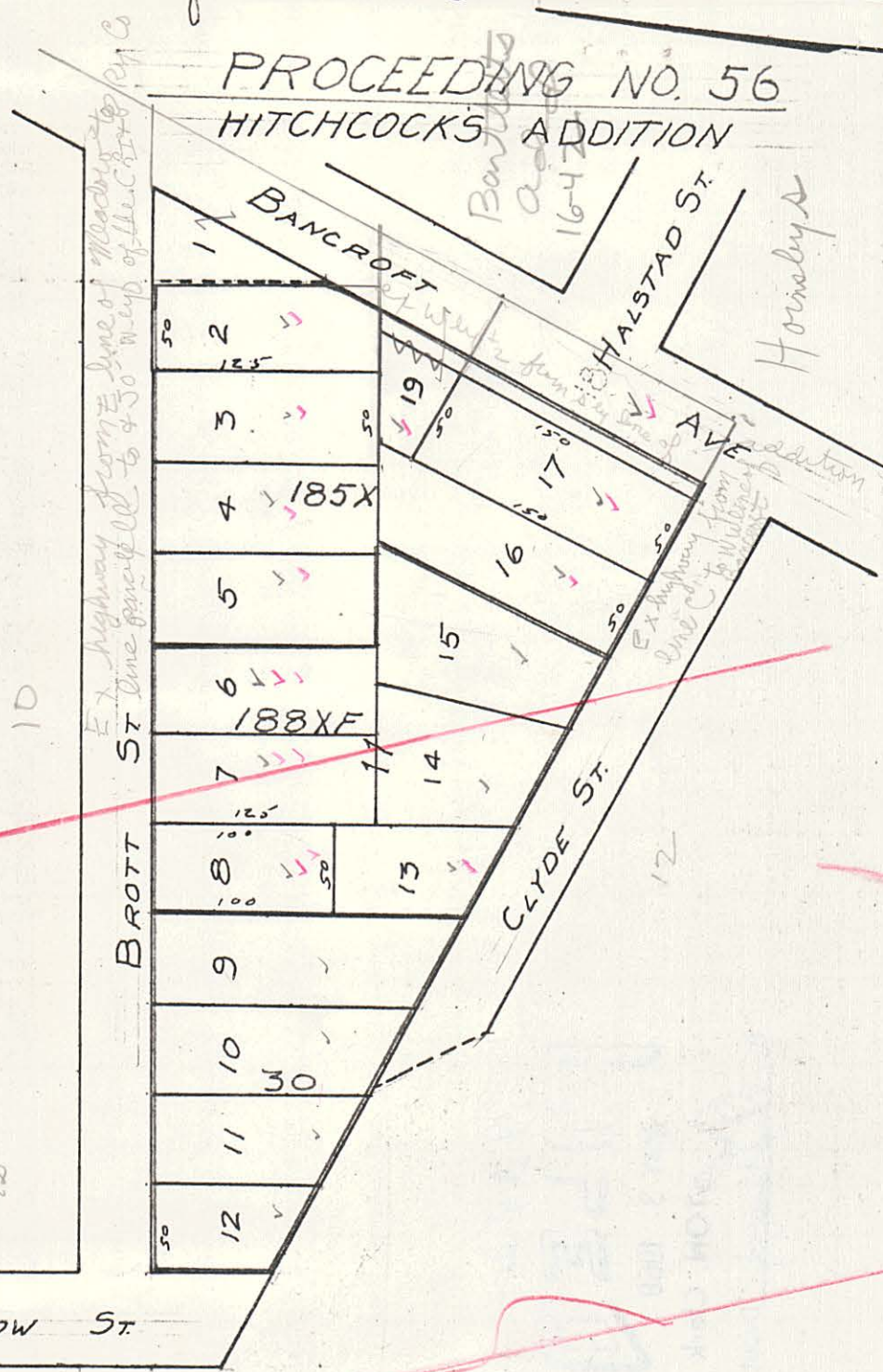


file 11342

PROJECT AREA 1-A

PROCEEDING NO. 56
HITCHCOCK'S ADDITION



Ex highway from E line of Meadow to E line of Bancroft to 450 West of the City of St. Paul

Bancroft
1642

Horsely

Ex highway from SW line of Bancroft to SW line of Halstad St
addition to SW line of C.R.I. + Ry Co. R/W

18-22-24
5-16-11341
8-17-2013

10

12

81-812

LEGEND

— PARCEL BOUNDARY
30 PARCEL NUMBER

PORT AUTHORITY
OF THE
CITY OF ST. PAUL
RIVERVIEW INDUSTRIAL PARK
SCALE 1"=100'