

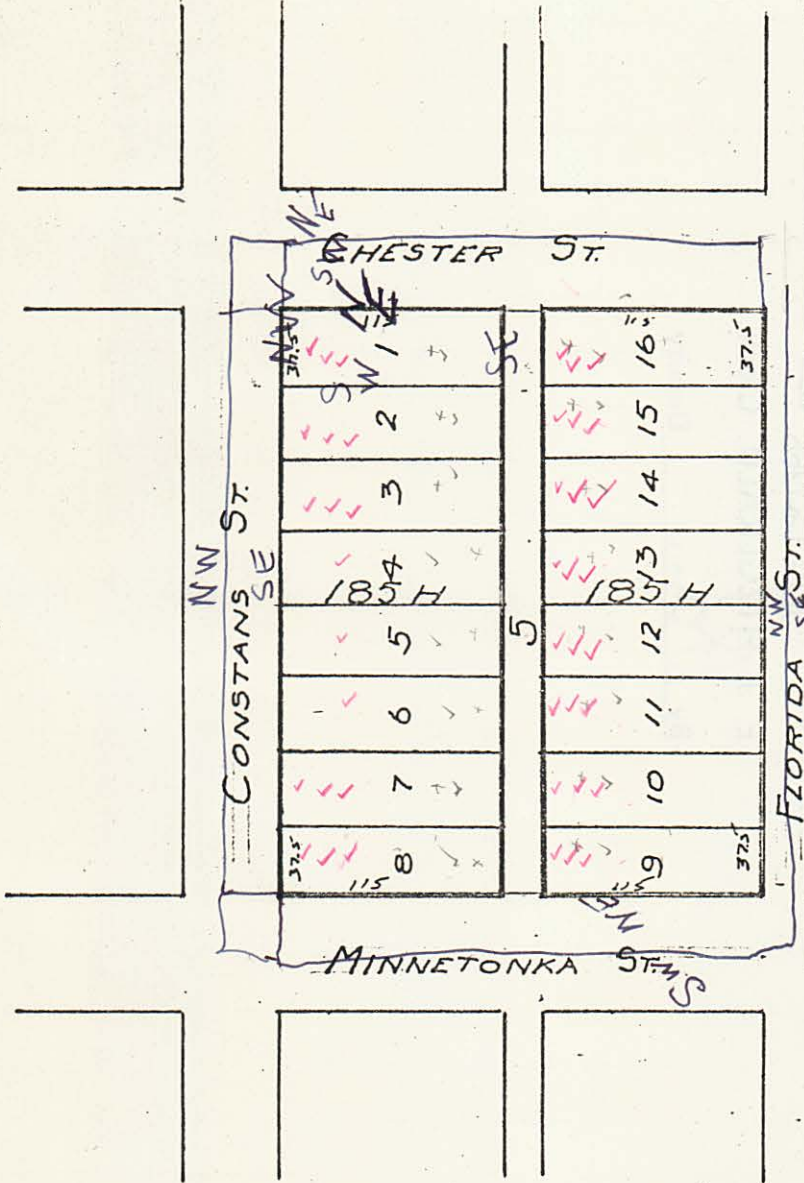
11281
R# 379

C. R. I. S. P. Ry.

#11281
R#379

PROCEEDING NO. 33

LANGEVIN'S 2ND ADDITION



LEGEND

— PARCEL BOUNDARY
185H PARCEL NUMBER

PORT AUTHORITY
OF THE
CITY OF ST. PAUL
RIVERVIEW INDUSTRIAL PARK
SCALE 1" = 100'