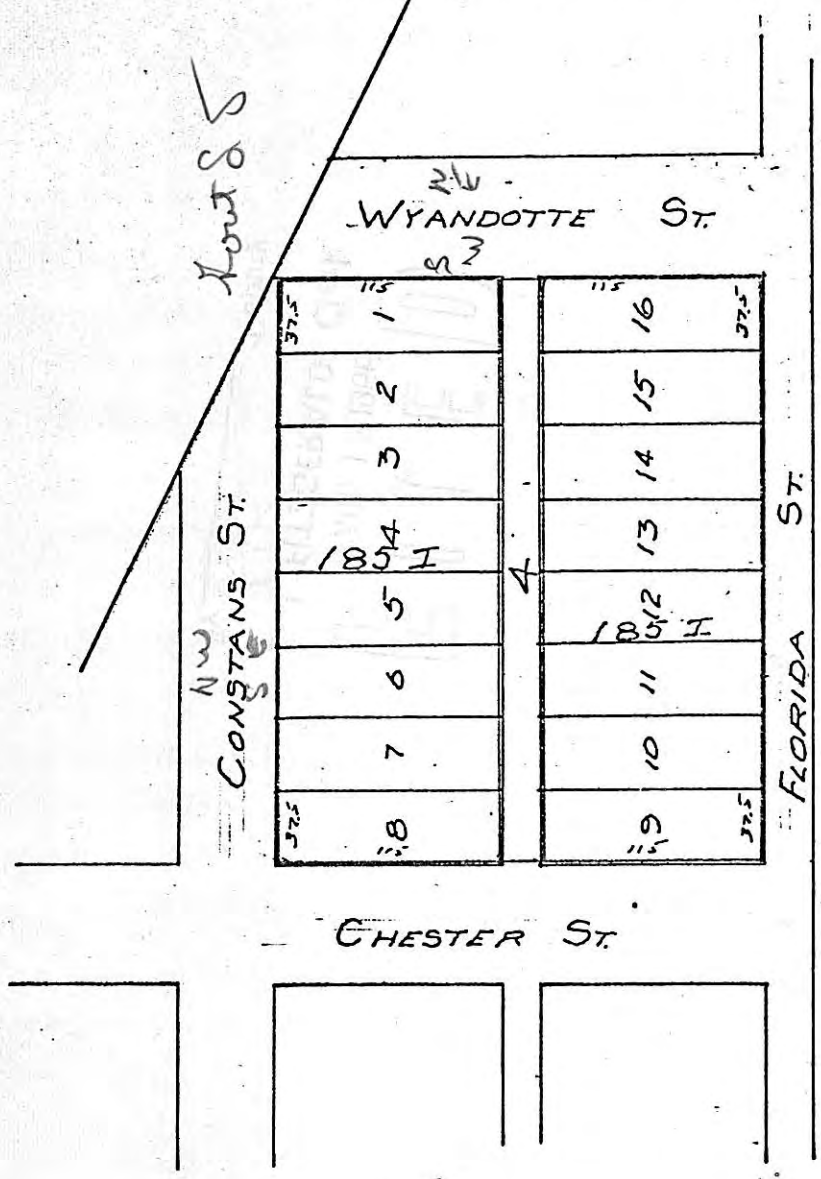


#11280  
R#379

PROCEEDING NO. 32

LANGEVIN'S 2ND ADDITION



LEGEND

== PARCEL BOUNDARY  
1851 PARCEL NUMBER

PORT AUTHORITY  
 OF THE  
 CITY OF ST. PAUL  
 RIVERVIEW INDUSTRIAL PARK  
 SCALE 1"=100'