

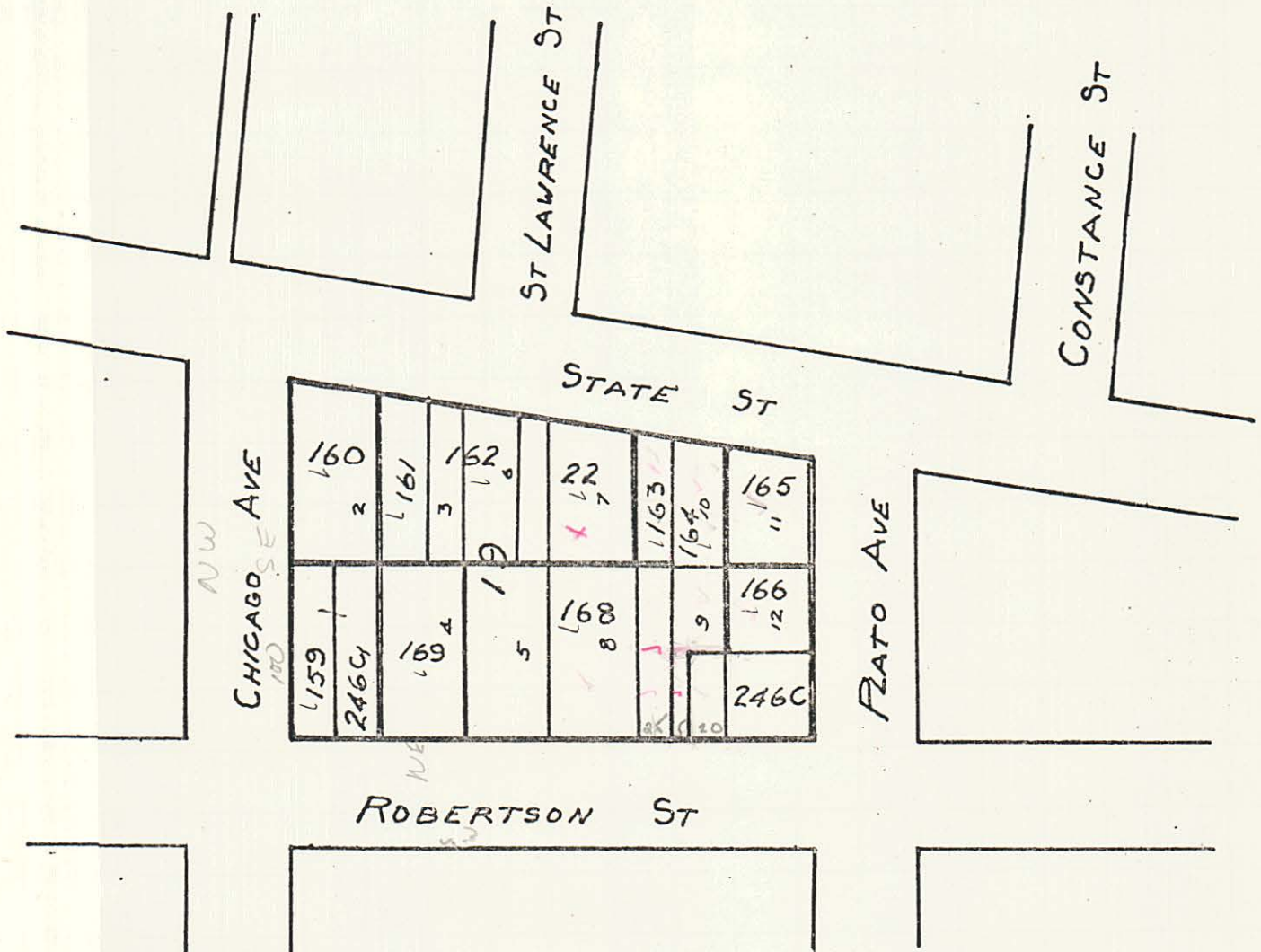
11271
R# 378



11271
R# 378

PROCEEDING NO. 72

BL 19 MARSHALLS ADDITION



LEGEND

- PARCEL BOUNDARY
159 PARCEL NUMBER

PORT AUTHORITY
OF THE
CITY OF ST PAUL
RIVERVIEW INDUSTRIAL PARK

SCALE 1" = 100'