

11227
R# 376

17
16
15
14
13
12
11

CITY
GARD.

AMEND WIDTH ORDER NO. 9884

NEE 246
BARBARA MATTHIES ET AL
SE 1/4 NW 1/4 Sec. 34-30-22
0.60 Ac.

Barbara Matthies et al. 46
Part NW 1/4 34-30-22
0.68 Ac.

S.E. 48
Adam Verling
Part N.E.N.W. 34-30-22

Edward Finnin 48
Part NW 1/4 34-30-22
0.15 Ac.

Johanna M. Kuehl 47
Part SE 1/4 NW 1/4 34-30-22
0.53 Ac.

S.E. 47
Herry Dahl
Northwestern Holding Co.
Pl. 5.5.4. NW 1/4 - Sec. 34-30-22

SCALE: 1" = 100'

47A
HENRY L. HOFFMAN
Part NE 1/4 NW 1/4 34-30-22
0.32 Ac.

B.P. 47A
HERRY DAHL
Part NE 1/4 NW 1/4 34-30-22
0.12 Ac.

lot 45
34-30-22

rodore and Franziska Flaspeter 44

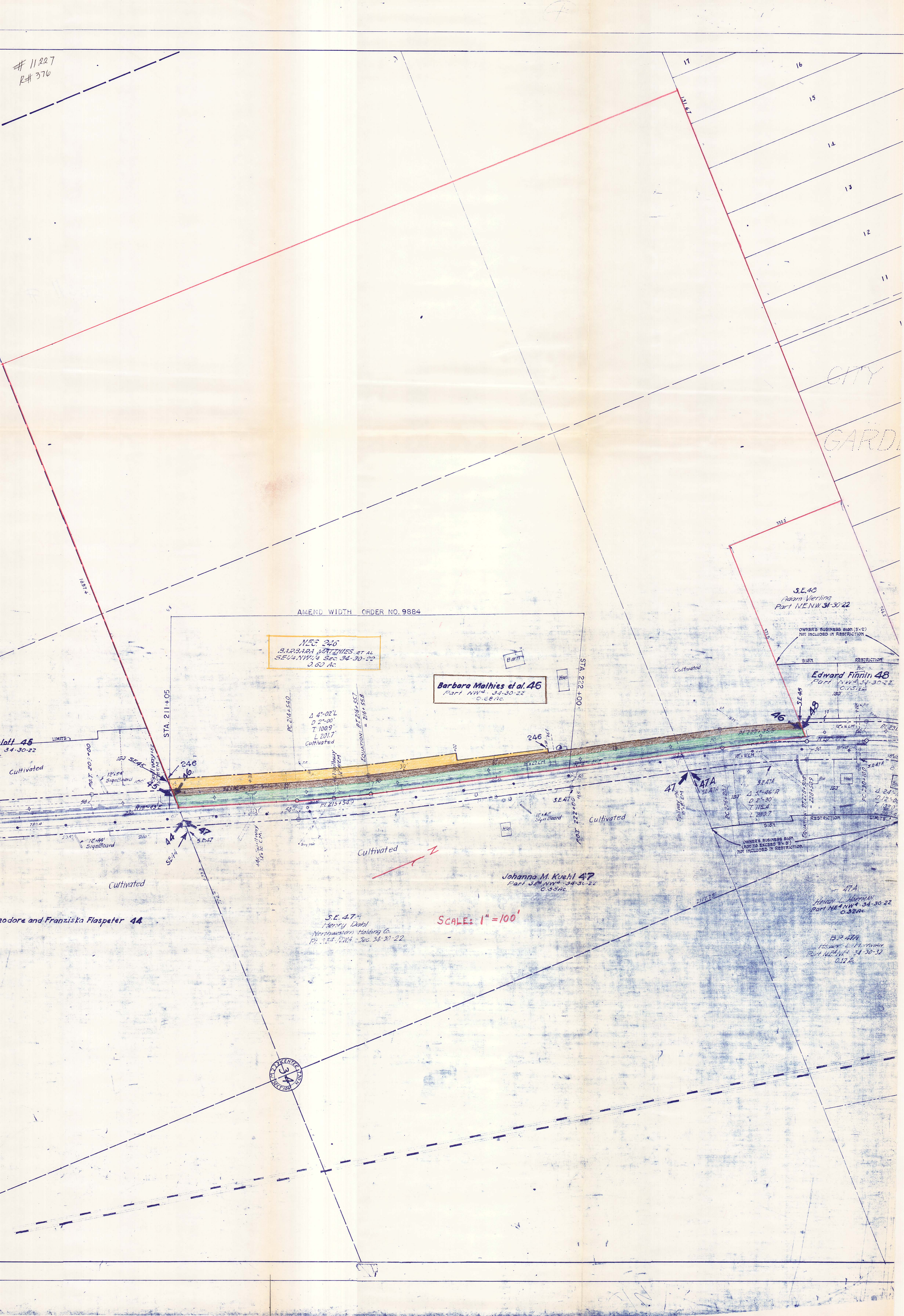
STA. 211+05

STA. 222+00

Δ 4°-02' L
D 2°-00'
T 1009'
L 201.7'
Cultivated

EQUATION: $PL 216+52.7$
 $= 216+52.6$

S.E. 47A
Δ 5°-46' R
D 2°-30'
T 715.4'
L 280.7'



PAR. 346
Barbara Matthies et al
Pt. N.W. 1/4 Sec. 34-30-22
2.76 Ac.

PAR. 248
Martha Vierling
Pt. N.W. 1/4 Sec. 34-30-22
0.93 Ac.

11227
R# 374

HEIGHTS

N.B. P.I. 215 + 06.04
Δ 4° 02' LT.
D 1° 00'
T 201.74'
L 403.33'

"L" P.T. 217 + 07.63

"L" P.C. 213 + 04.3

BARN
GAR.
CH HO.
PUMP HO.
1 1/2-S-B HO.

BARN
1-S-F HO.

248
249

346
248

245B
346

STA 224+91.6
+0+00 Δ 83.36°

Turn Lane
Let 4-26-68

T.H. 61

244
247

247
247B

247B
250A
250A
250C
205B
350A
347B
350A

1 1/2-S-F HO.
1 1/2-S-F HO.
BARN
CH COOP

1 1/2-S-F HO.
GAR.
CH COOP

SCALE: 1"=100'



CORP. LIMITS OF VADNAIS HEIGHTS
CORP. LIMITS OF WHITE BEAR LAKE

PAR. 247B
Clifford B. Garner et al
Pt. S.E. 1/4 NW 1/4 Sec. 34-30-22
0.53 Ac.

PAR. 247
Robert A. Grant et al
Pt. S.E. 1/4 NW 1/4 Sec. 34-30-22
0.28 Ac.

WHITE BEAR LAKE

PAR. 250 A
Henry L. Hoffman et al
Lot II Aud. Sub-div. No. 84 Ramsey Co.
0.15 Ac.



NORTHERN

GE

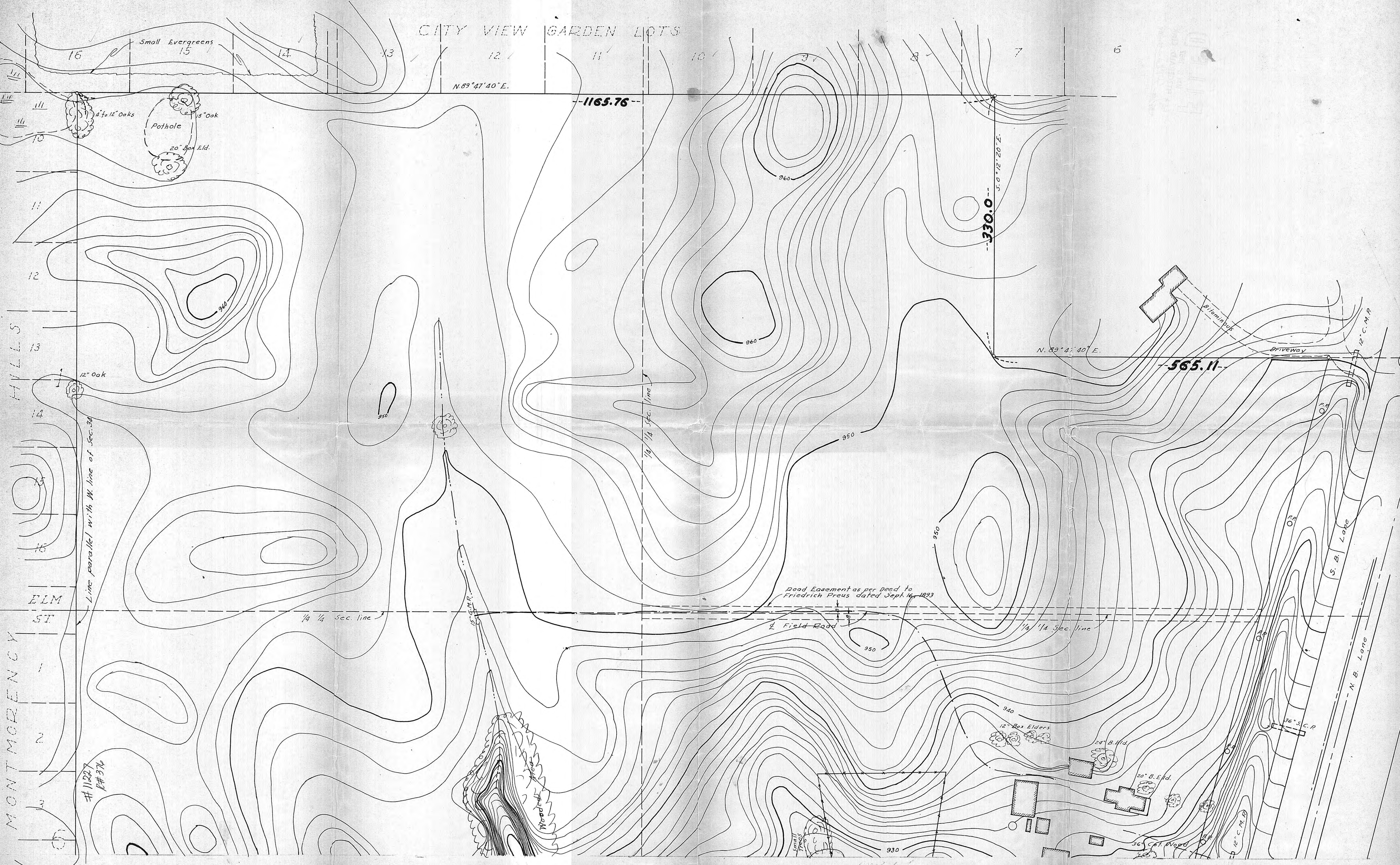
EQUATION

CORP. LIMITS OF VADNAIS HEIGHTS
CORP. LIMITS OF WHITE BEAR LAKE

"L" P.O.T. 230 + 00'
"L" P.O.T. 231 + 00'

Lot

CITY VIEW GARDEN LOTS



HILLS

ELM ST

MONTMORENCY

Line parallel with W. line of Sec. 34

#11227
#1#376

N. 89° 47' 40" E.

1165.76

330.0

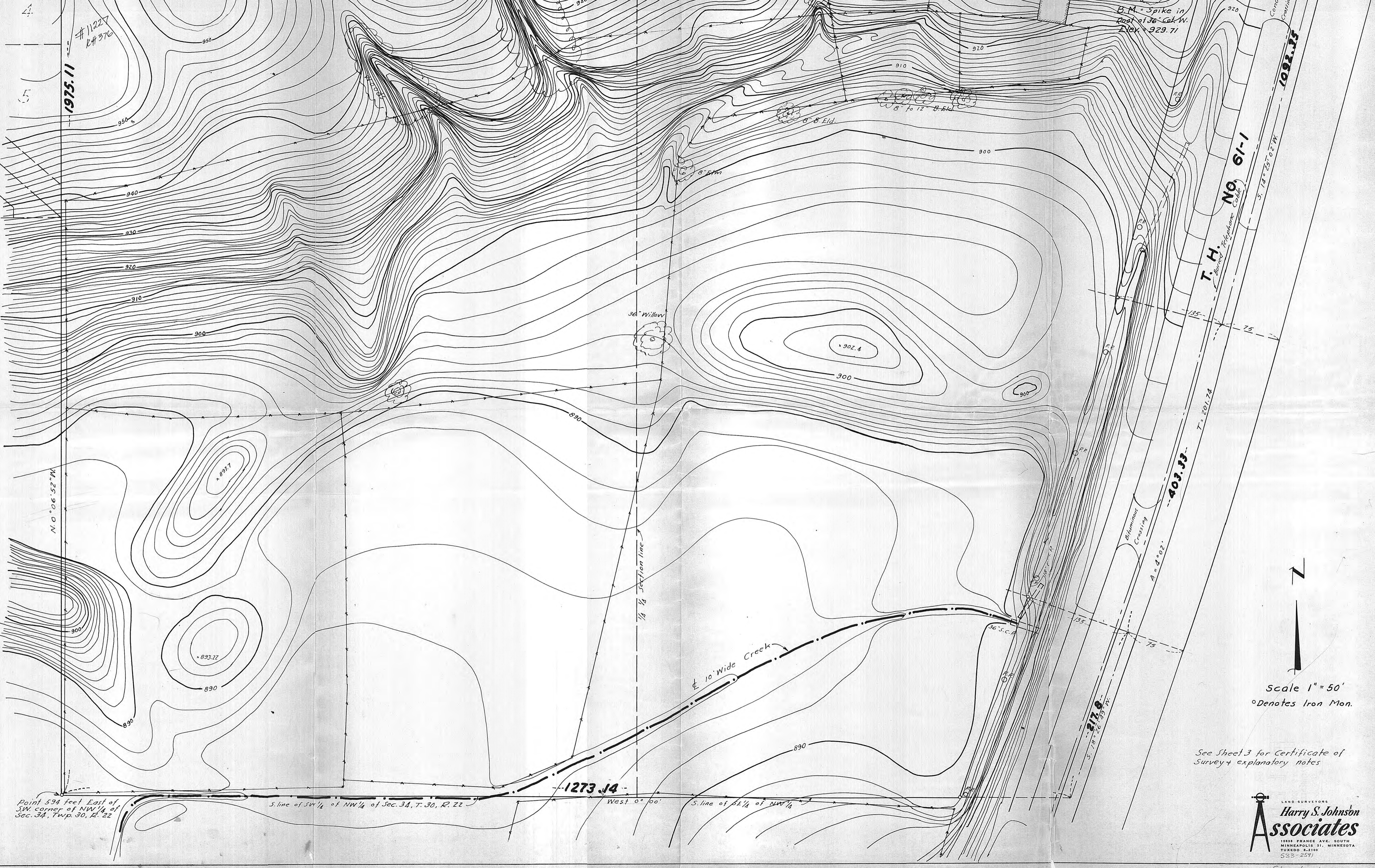
N. 89° 47' 40" E.

565.11

Road Easement as per Deed to Friedrich Preus dated Sept. 16, 1873

Field Road

A. B. Lane



#11227
2#376

1975.11

B.M. = Spike in
East of 36' Cat W.
Elev. = 929.71

N. 0° 06' 52" W

1/4 Section line

E 10' Wide Creek

T.H. No. 61-1
Buried Telephone Cable

403.33

1273.14

Point 594 feet East of
SW corner of NW 1/4 of
Sec. 34, Twp. 30, R. 22

S. line of SW 1/4 of NW 1/4 of Sec. 34, T. 30, R. 22

West 0° 00'

S. line of SE 1/4 of NW 1/4

Scale 1" = 50'
° Denotes Iron Mon.

See Sheet 3 for Certificate of
Survey & explanatory notes

LAND SURVEYORS
**Harry S. Johnson
Associates**
10935 FRANCE AVE. SOUTH
MINNEAPOLIS 21, MINNESOTA
TUXTEDO 8-2100
533-2571

Sheet 1