

#11223
R# 376

Part of Kittson's Addition



12th ST
3rd ST
11th ST
4th ST

10th ST
9th ST
8th ST

7th ST
6th ST
5th ST

4th ST
3rd ST
2nd ST

1st ST
10th ST
9th ST
8th ST
7th ST
6th ST
5th ST
4th ST
3rd ST
2nd ST
1st ST

10th ST
9th ST
8th ST
7th ST
6th ST
5th ST
4th ST
3rd ST
2nd ST
1st ST

10th ST
9th ST
8th ST
7th ST
6th ST
5th ST
4th ST
3rd ST
2nd ST
1st ST

2
4 3 2

5
6 7 8

12
5 6 7 8

13
5 6 7 8

14
5 6 7 8

15
5 6 7 8

25
5 6 7 8

27
5 6 7 8

29
5 6 7 8

30
5 6 7 8

31
5 6 7 8

32
5 6 7 8

1
5 6 7 8

6
6 7 8

11
5 6 7 8

16
5 6 7 8

21
5 6 7 8

26
5 6 7 8

31
5 6 7 8

36
5 6 7 8

41
5 6 7 8

46
5 6 7 8

51
5 6 7 8

56
5 6 7 8

3
5 6 7 8

8
5 6 7 8

13
5 6 7 8

18
5 6 7 8

23
5 6 7 8

28
5 6 7 8

33
5 6 7 8

38
5 6 7 8

43
5 6 7 8

48
5 6 7 8

53
5 6 7 8

58
5 6 7 8

4
5 6 7 8

9
5 6 7 8

14
5 6 7 8

19
5 6 7 8

24
5 6 7 8

29
5 6 7 8

34
5 6 7 8

39
5 6 7 8

44
5 6 7 8

49
5 6 7 8

54
5 6 7 8

59
5 6 7 8

5
5 6 7 8

10
5 6 7 8

15
5 6 7 8

20
5 6 7 8

25
5 6 7 8

30
5 6 7 8

35
5 6 7 8

40
5 6 7 8

45
5 6 7 8

50
5 6 7 8

55
5 6 7 8

60
5 6 7 8

Pine Str.

Olive Str.

John Str.

Lafayette

Willis

2 1/2 Post

2 1/2 Chs. or 1650

AD 9L
WIP

SMITH'S
ADD

SOMERSET ST.

11223
R# 376

METCALFE'S
ADD

TOAN'S
ADD

DAYTON'S
ENLARGEMENT

AUDITORS SUB NO 12

MCHENRY'S SUB
OF BLOCK 15 HOYT ADD

BAGNE'S SUB
OF BLOCK 15 HOYT ADD

AUDITORS SUB NO 25

SPRUCE ST.

BALSAM ST.

BALSAM ST.

MURPHY MOTOR LINES
BROADWAY MOTOR INC.

E. TEATH ST.

INVALID HOME

NAND

CADWAY

15

60

60

60

60

60

60

60

60

60

60

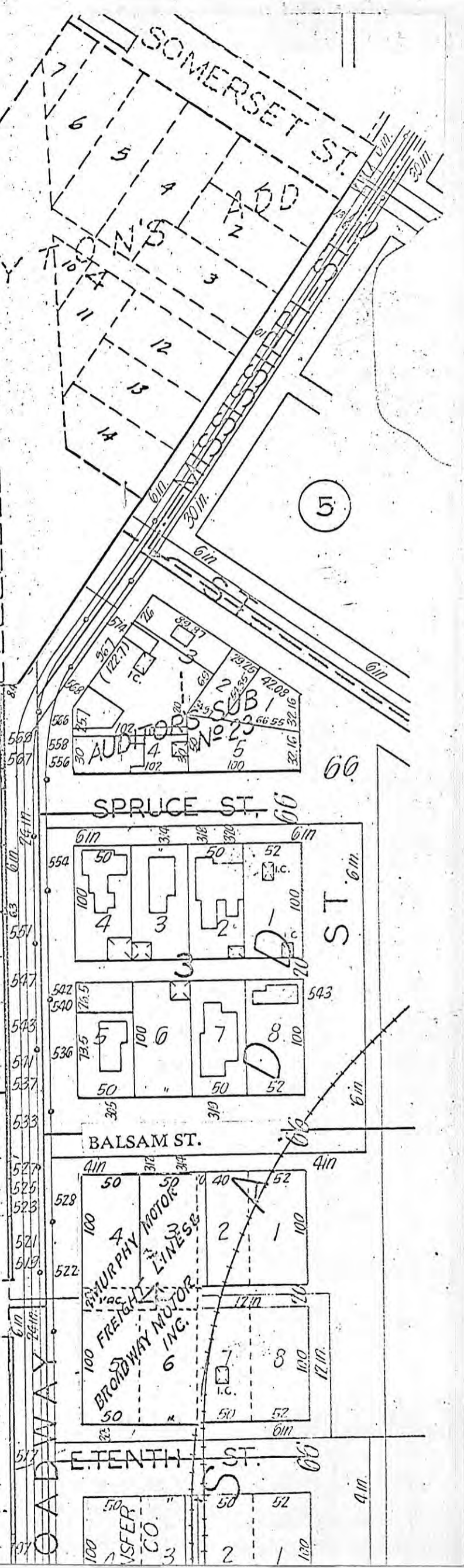
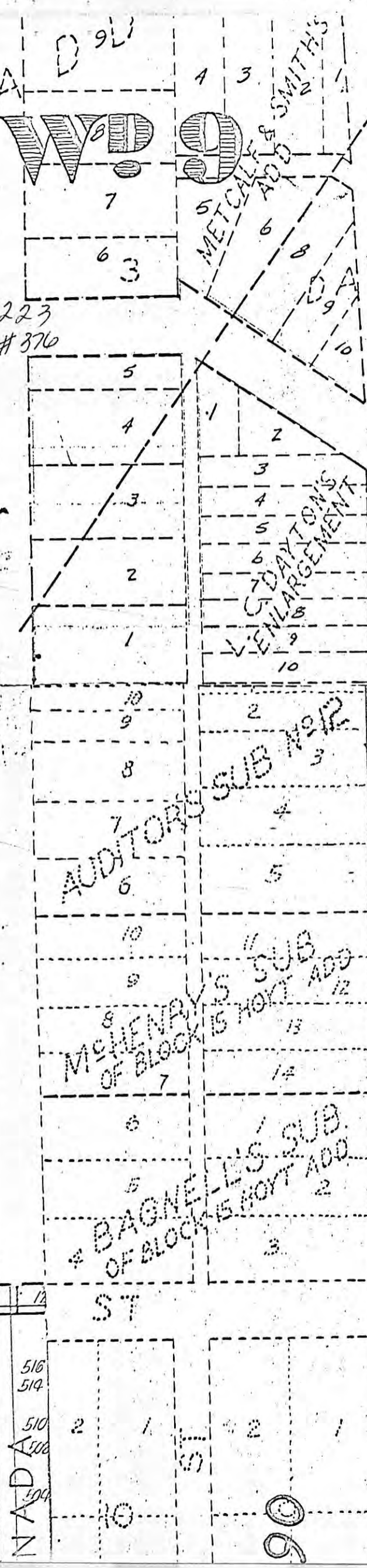
60

60

60

60

1.5
1
2
3
4
5
6
7
8
9
10
11
12
13
14
15
16
17
18
19
20
21
22
23
24
25
26
27
28
29
30
31
32
33
34
35
36
37
38
39
40
41
42
43
44
45
46
47
48
49
50
51
52
53
54
55
56
57
58
59
60
61
62
63
64
65
66
67
68
69
70
71
72
73
74
75
76
77
78
79
80
81
82
83
84
85
86
87
88
89
90
91
92
93
94
95
96
97
98
99
100



SP6283 (94-392)902

RAMSEY COUNTY

EXHIBIT "A"

11223

R# 374

PAR 27D

SAM LEVEY

Lots 5, 6 Bk. 25 KITTSON

Add'n

ENTIRE TRACT

NEW R/W

AK
AK

10,000 Sq FT. 80

2,625 Sq FT. 40

7,375 Sq FT. BAL 40

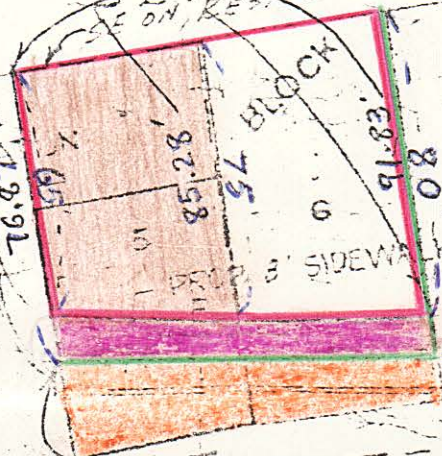
3,500 Sq FT. SE (EXPIRE-1-07) 40

3-M



SCALE: 1" = 50'

Measurements
are to North
Edge of sidewalk
Subtract 1'
for new
R/W



1 FOOT FROM NORTH EDGE SIDEWALK
NO ACCESS TO E. 7TH ST.

CONSENT LIMITS

SEVENTH ST. RELOC.

7C

10

12' 3'00"

666
666
666

SP 6283-05 (TH 94)

RAMSEY COUNTY EXHIBIT "B"

11223
R# 376

PAR 27D
SAM LEVEE
Lots 5, 6 Bk. 25
Add'n
ENTIRE TRACT
NEW R/W

10,000 SQ FT. No
2,625 SQ FT. 2A
7,375 SQ FT. 2A
3,500 SQ FT. BAL

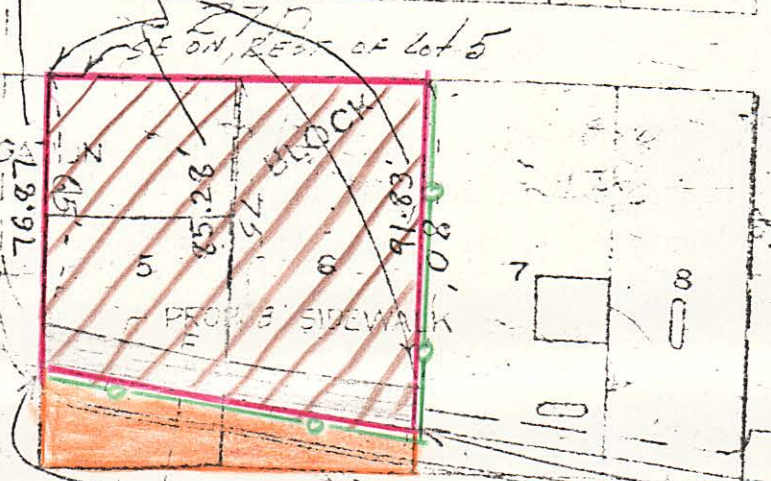
SE (EXPIRES 1-07)

3-M

AK
AK

SCALE 1"=50'

Measurements
are to North
Edge of sidewalk
Subtract 1'
for new R/W



1 FOOT FROM NORTH EDGE SIDEWALK
NO ACCESS TO E. 7TH ST.

E. 7TH ST. RELOC