

WEST 90ft of
 LOT 4 BLOCK 53.
 WEST ST. PAUL PROPER,

JOHN B. IRVINE, SURVEYOR.

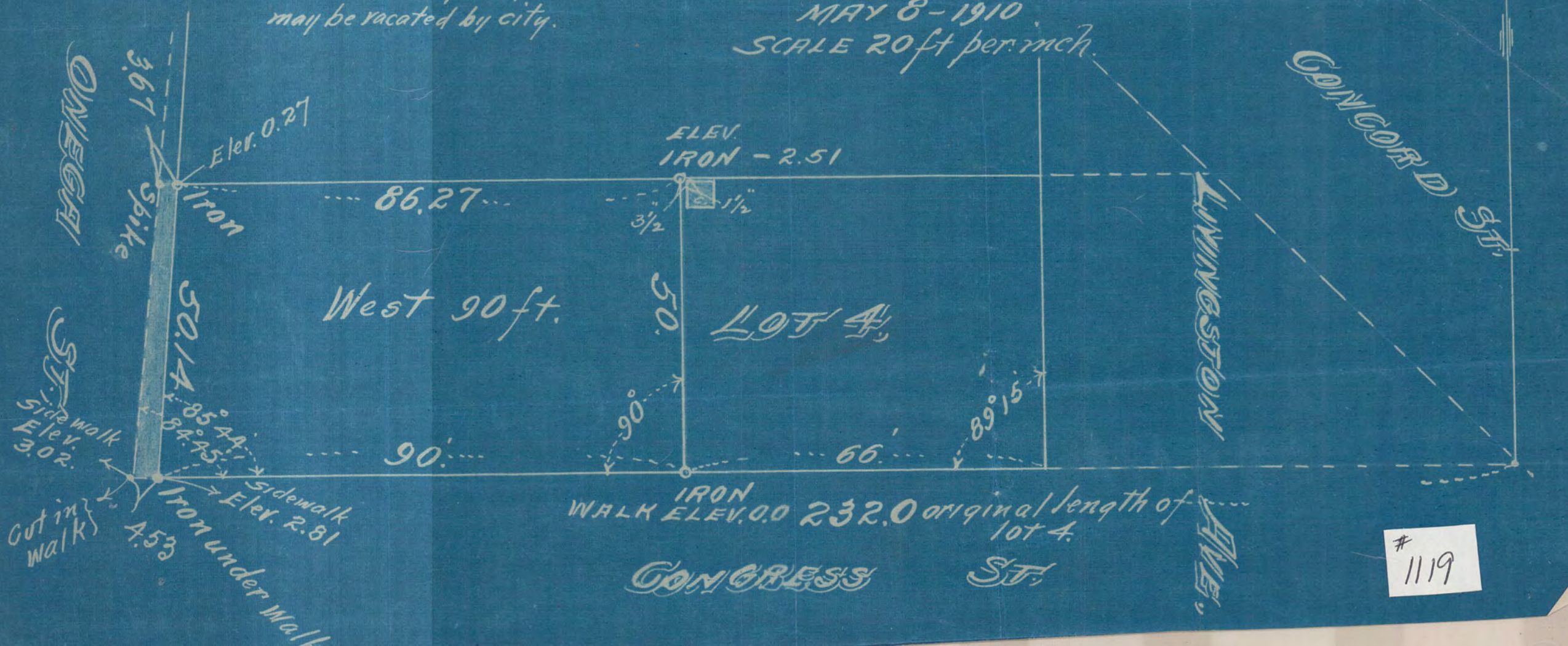
408 GLOBE BLD'G.

ST. PAUL, MINN.

MAY 8 - 1910

SCALE 20ft per inch.

"NOTE" shaded part of Omega St.
 may be vacated by city.



1119