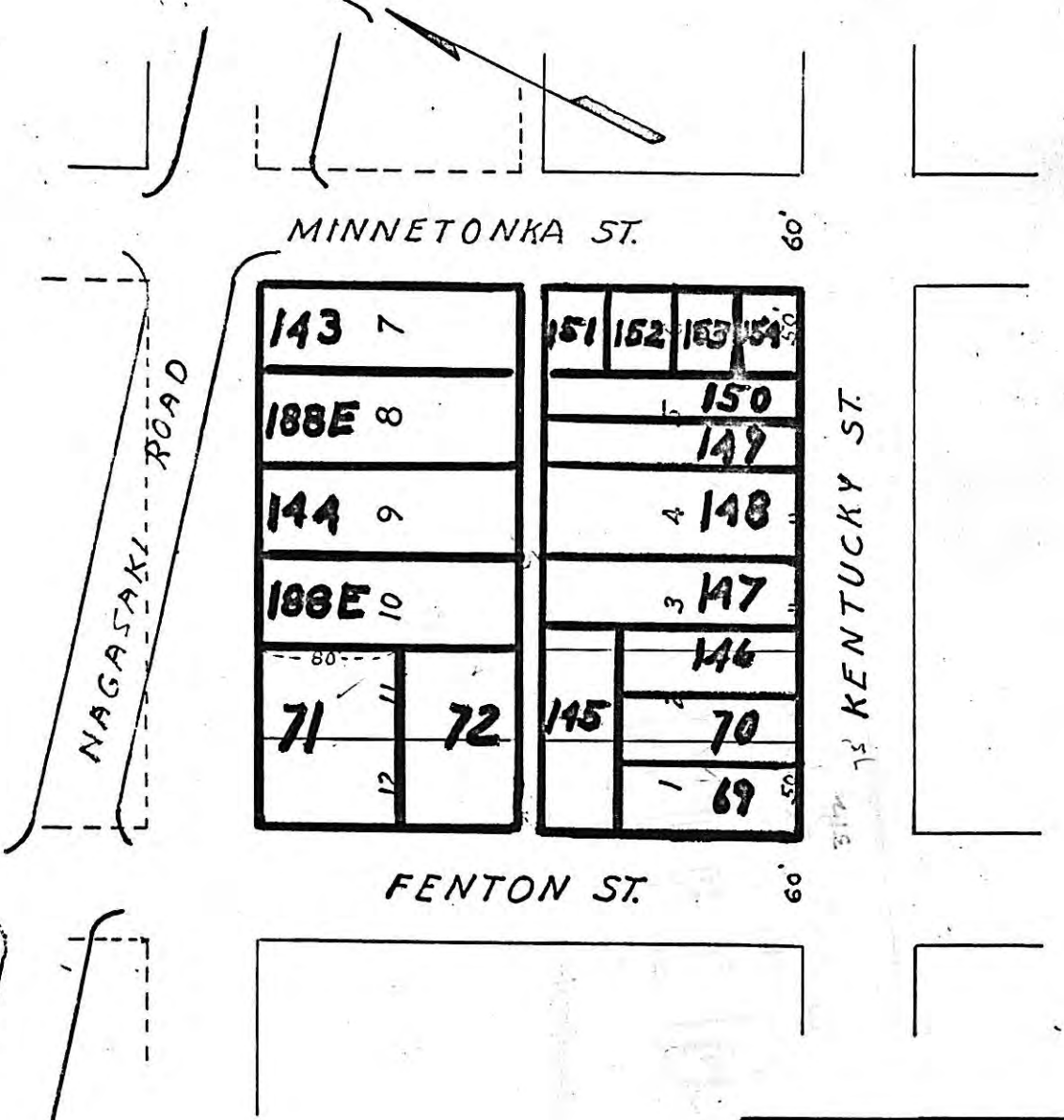
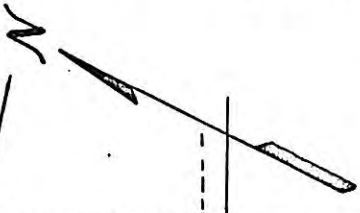


# PROCEEDING NO 11

TOWN OF BROOKLYND



## LEGEND

- PARCEL BOUNDARY
- 188E** PARCEL NUMBER

# 10987  
R# 364

PORT AUTHORITY  
OF THE  
CITY OF ST. PAUL  
RIVERVIEW INDUSTRIAL PARK  
DATE: 10/8/64 SCALE: 1"=100'



# BROOKLYND. WEST ST. PAUL.

SCALE: 150 FT. TO 1 INCH.

# 10987  
R# 364

