

# CERTIFICATE OF SURVEY

F. J. ARMSTRONG  
Civil Engineer and Surveyor  
ST. PAUL, MINN.

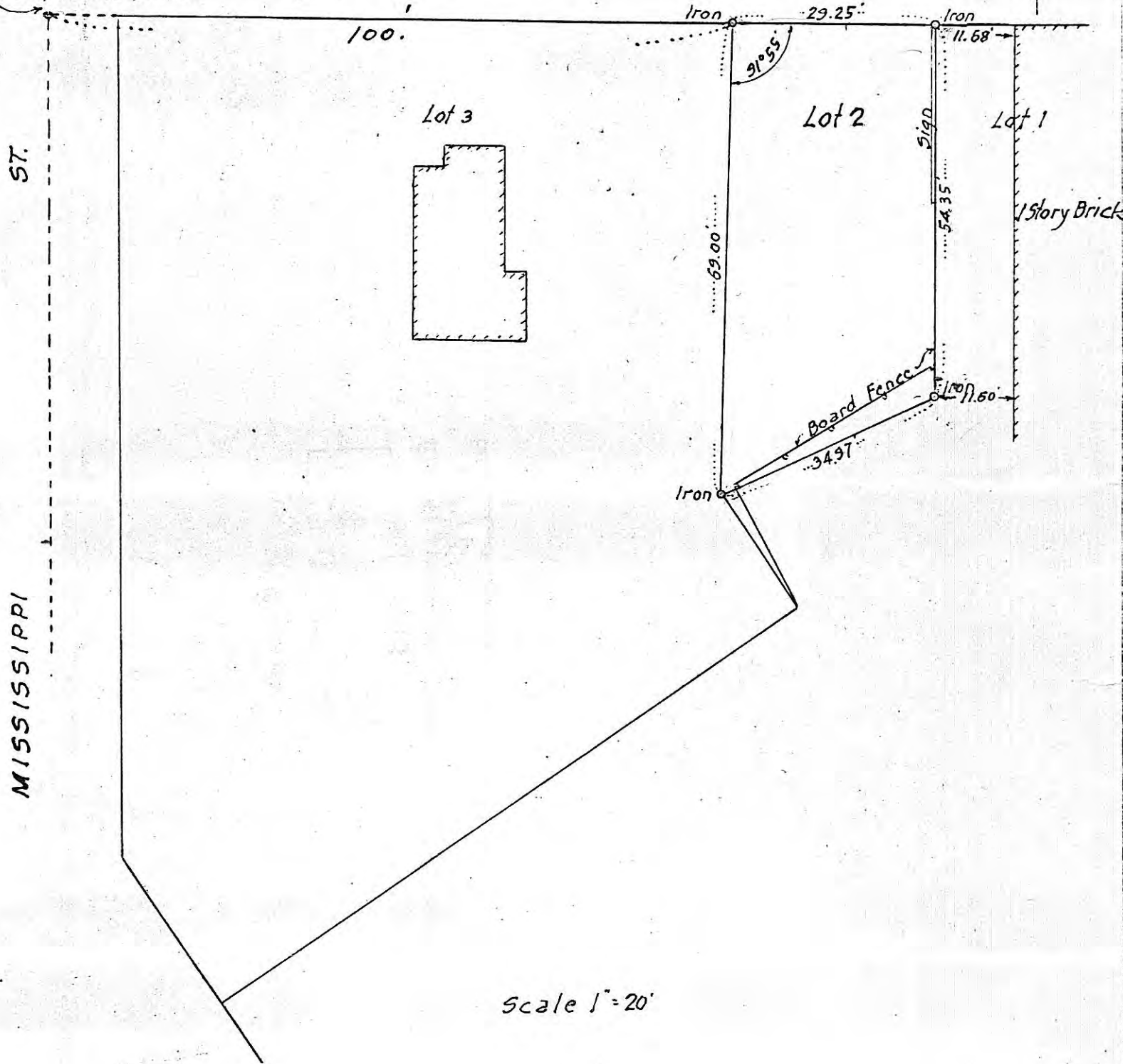
# 10923  
R# 362



GROVE

ST.

Northwest corner Blk 1  
Kittson's Addn.



Scale 1" = 20'

I HEREBY CERTIFY that on the 10<sup>th</sup> day of November, A. D. 1954

I made a survey of the following described property, to-wit: Lot 2, Auditor's  
Subdivision N° 23, St. Paul, Minn.

There are no encroachments except as indicated  
and of said lot  
and the above map is a true and correct map of said survey and the improvements shown thereon are correctly  
indicated, and iron monuments have been correctly placed at all  
corners as shown.

Subscribed and sworn to before me this  
10 day of Nov., 1954  
Notary Public.

My Commission Expires LEN. O. ANIVERS  
County, Minn.  
Sept. 20, 1955

*F. J. Armstrong*  
Civil Engineer