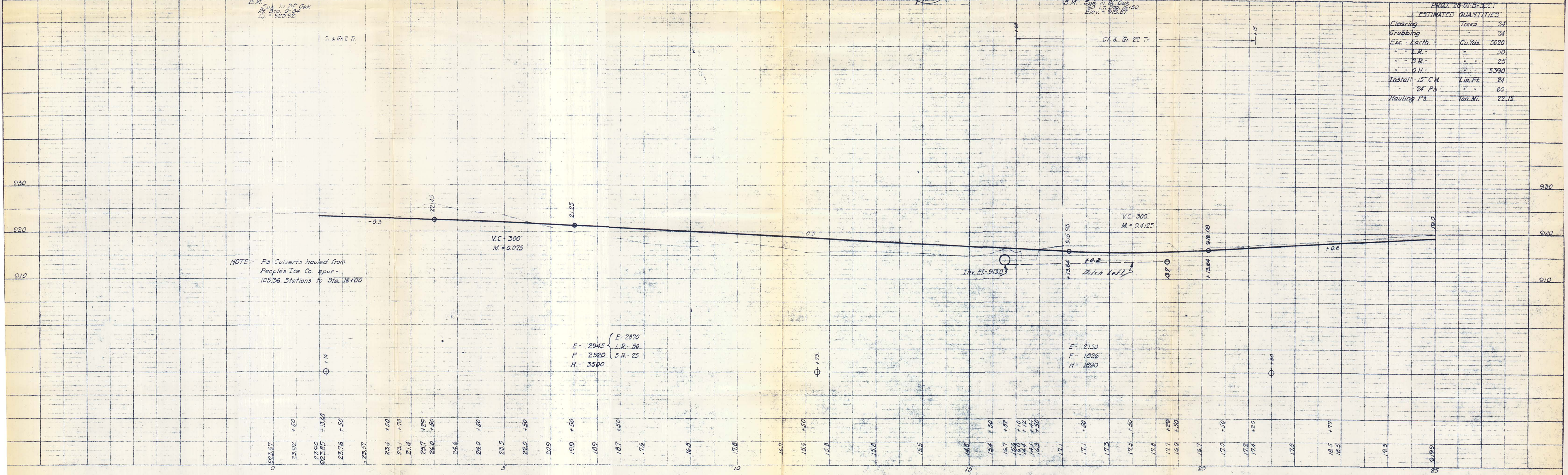
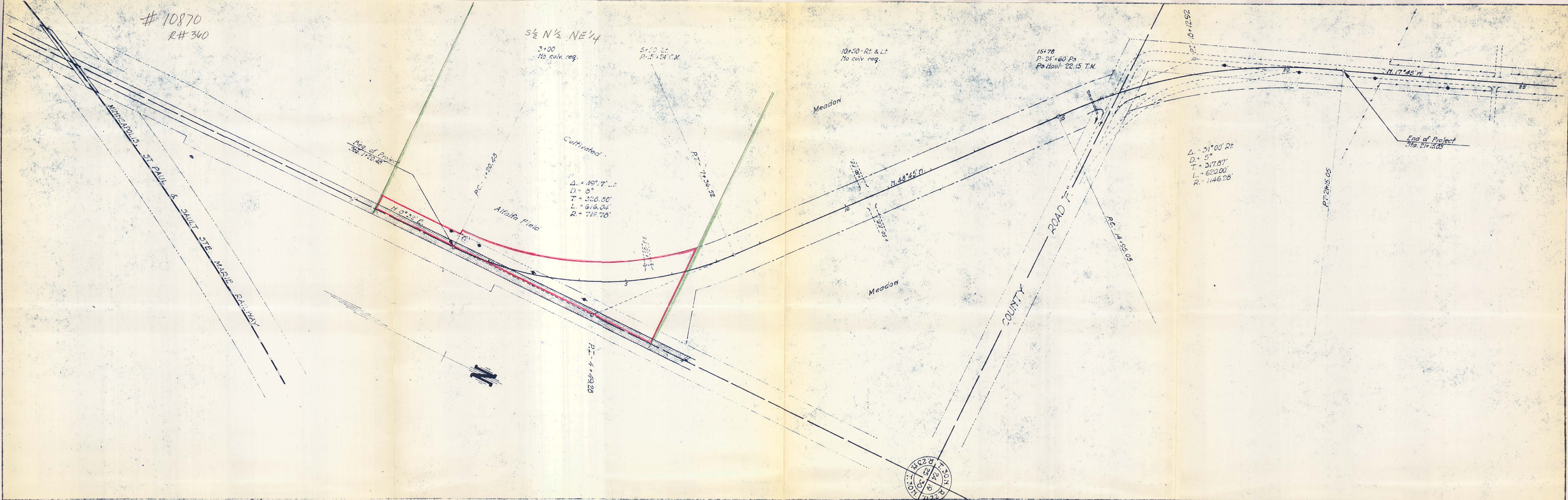


10870
R# 360



NOTE: P3 Culverts hauled from Peoples Ice Co. spur - 105.26 Stations to Sta. 16+00

E - 2870
F - 2945
F - 2520
H - 3500

E - 2150
F - 1926
H - 1890

PROJ. 28-01-B-1-1

ESTIMATED QUANTITIES	
Clearing	Trees 24
Grubbing	- - - - -
Exc. Earth	Cu. Yds. 5020
- L.R.	- - - - - 20
- S.R.	- - - - - 25
- O.H.	- - - - - 5390
Instal. 15" C.M.	Lin. Ft. 24
24" P3	- - - - - 60
Hauling P3	Van. Mi. 22.15