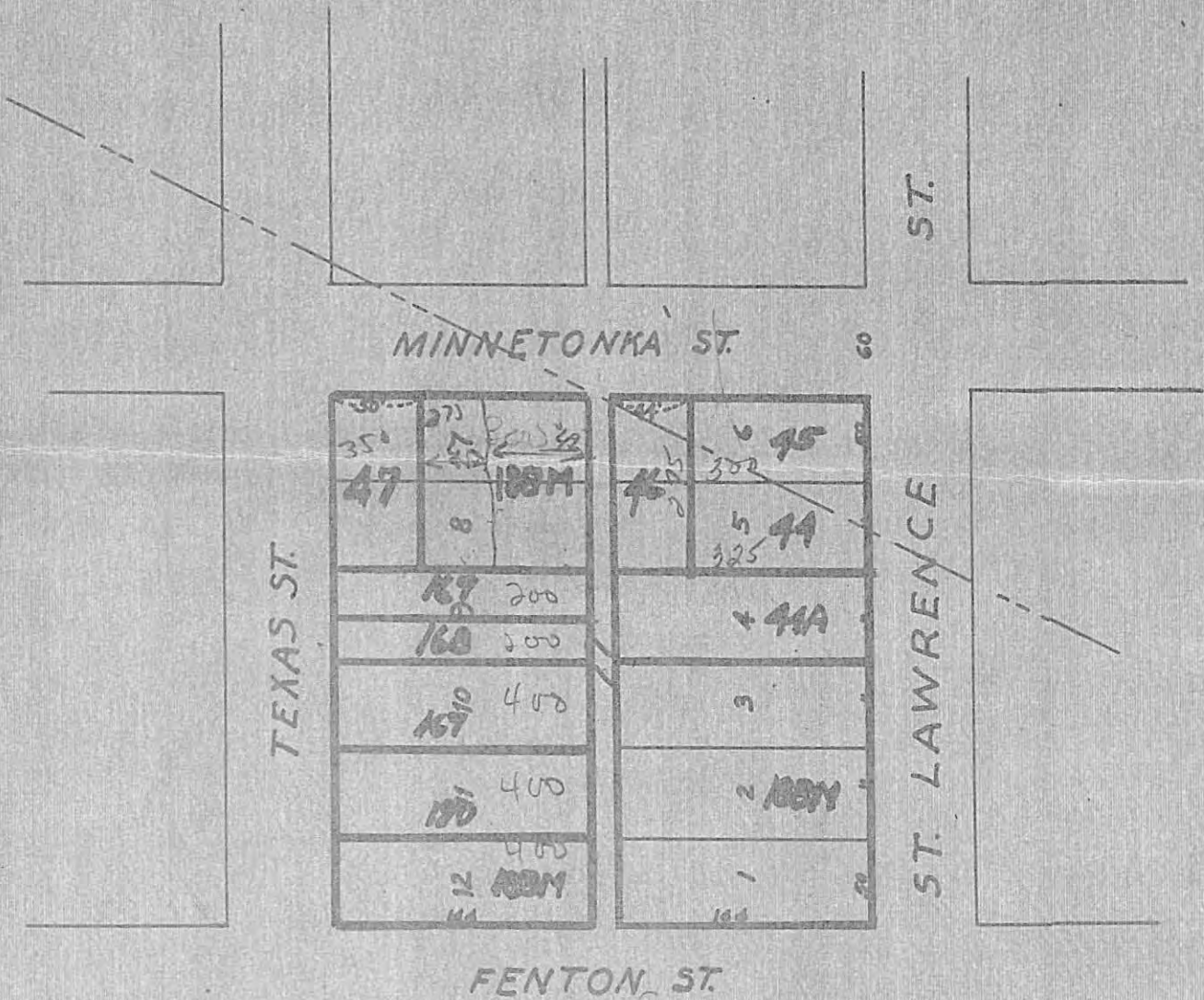
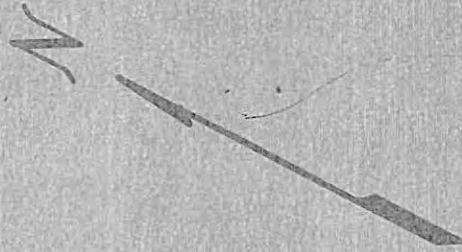


10821
R# 358

PROCEEDING NO. 23

DUNWELL & SPENCER'S ADDITION TO BROOKLYND



LEGEND

— PARCEL BOUNDARY

47 PARCEL NUMBER

10821
R# 358

PORT AUTHORITY
OF THE
CITY OF ST. PAUL

RIVERVIEW INDUSTRIAL PARK

DATE: 11/13/63 SCALE: 1"=100'