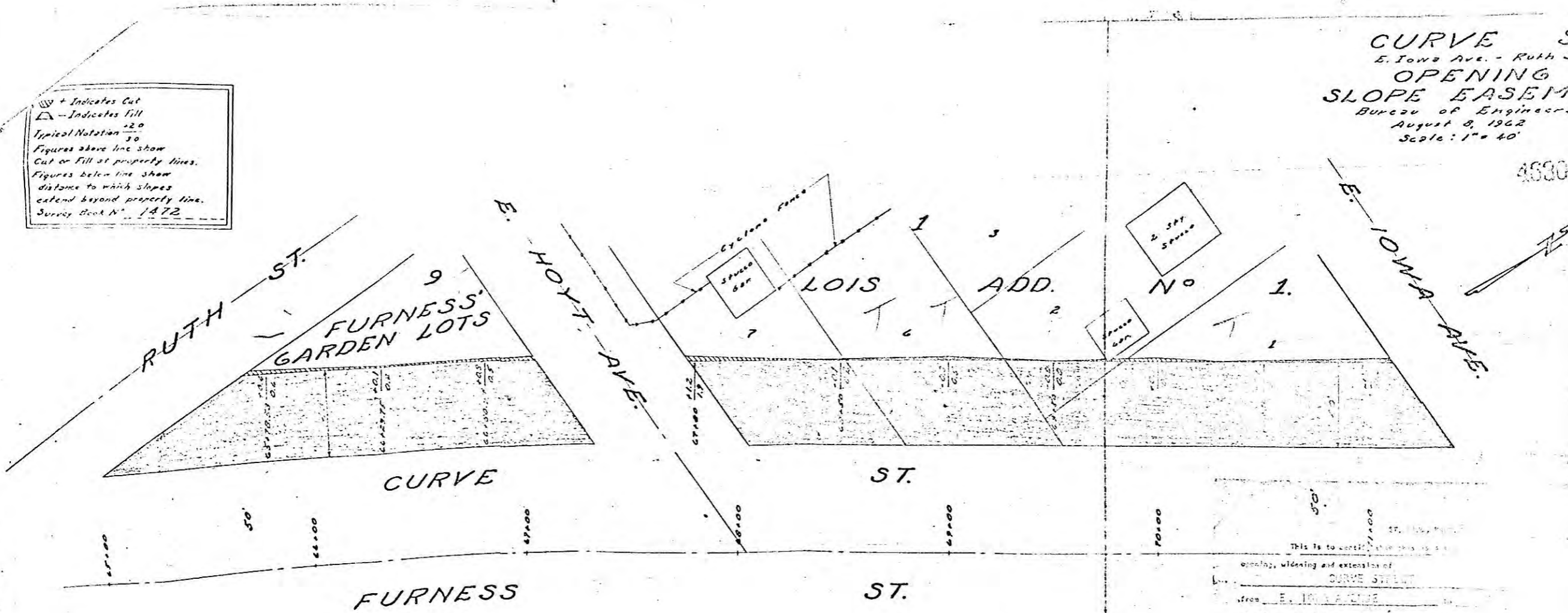


file 10793

+ Indicates Cut
 - Indicates Fill
 Typical Notation $\frac{2.0}{3.0}$
 Figures above line show
 Cut or Fill at property lines.
 Figures below line show
 distance to which slopes
 extend beyond property line.
 Survey Book N^o. 1472

CURVE ST.
 E. Iowa Ave. - Ruth St.
 OPENING
 SLOPE EASEMENT
 Bureau of Engineers
 August 8, 1962
 Scale: 1" = 40'

458012



CURVE ST.
 Iowa - Ruth St.
 OPENING
 SLOPE EASEMENT
 Dr. 2, 11-15-62

This is to certify that this is a
 opening, widening and extension of
 CURVE STREET
 from E. IOWA AVENUE to
 the final order for which, when as Council filed
 adopted by the Council and published in the
 and record of the same.