

WEST ST PAUL PROPER.

LOTS 1 AND 2 BL #7.

ST PAUL JULY 14-1910

AND.
 LOTS 1 AND 2 BL 2 BELLS 2ND ADD
 EXCEPT PART TAKEN BY CITY.

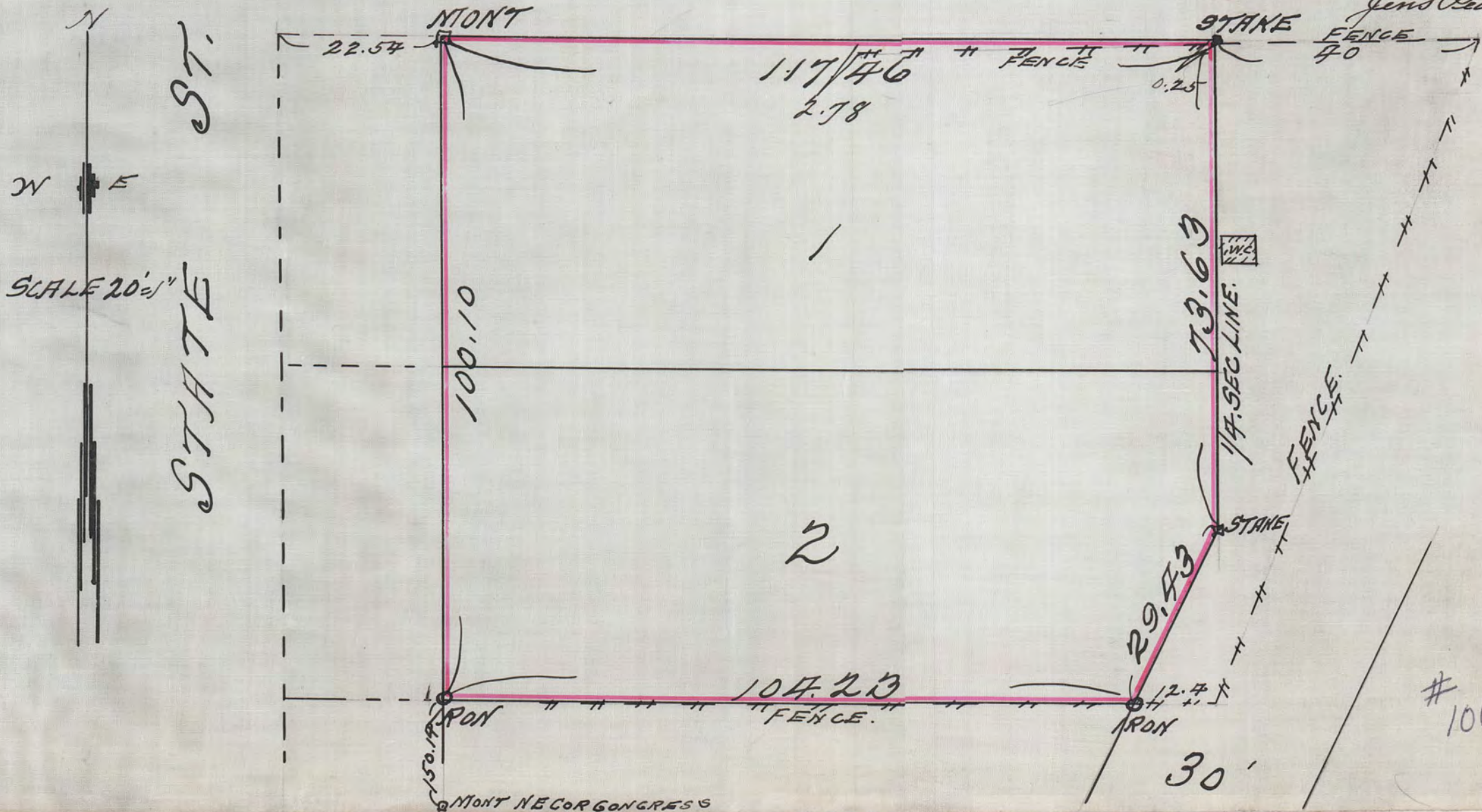
I HEREBY CERTIFY TO HAVING
 SURVEYED LOTS 1 AND 2 BL #7 WEST
 ST PAUL PROPER AND LOTS 1 AND 2 BL 2
 BELLS 2ND ADD TO WEST ST PAUL EXCEPT
 THAT PORTION OF SAID LOTS LYING WLV.
 OF E LINE OF STATE ST AS INDICATED
 BY GRANITE MONUMENTS SET BY
 CITY ENGINEER DURING THE MONTH
 OF MAY 1887 ONE OF WHICH IS UPON
 SOUTH LINE OF ISABEL ST AND THE
 OTHER UPON THE NORTH LINE OF
 CONGRESS ST. AND HAVE PLACED
 IRON MONTS AND STAKES ON THE
 CORNERS AS INDICATED ON THIS MAP
 AND THE SAME IS CORRECT

SCALE 20' = 1"

ISABEL ST.

Jens Pedersen
 SURV.

1068



1068

MONY NE COR CONGRES