

# PLAT OF SURVEY

by  
**R. C. WOLFGRAM**  
REGISTERED LAND SURVEYOR  
ST. PAUL, MINNESOTA

I hereby certify that this is a true and correct plat of a survey of the land shown and described hereon, and that any monuments or markers indicated hereon have been placed as shown, and that any improvements or physical conditions indicated hereon are as shown.

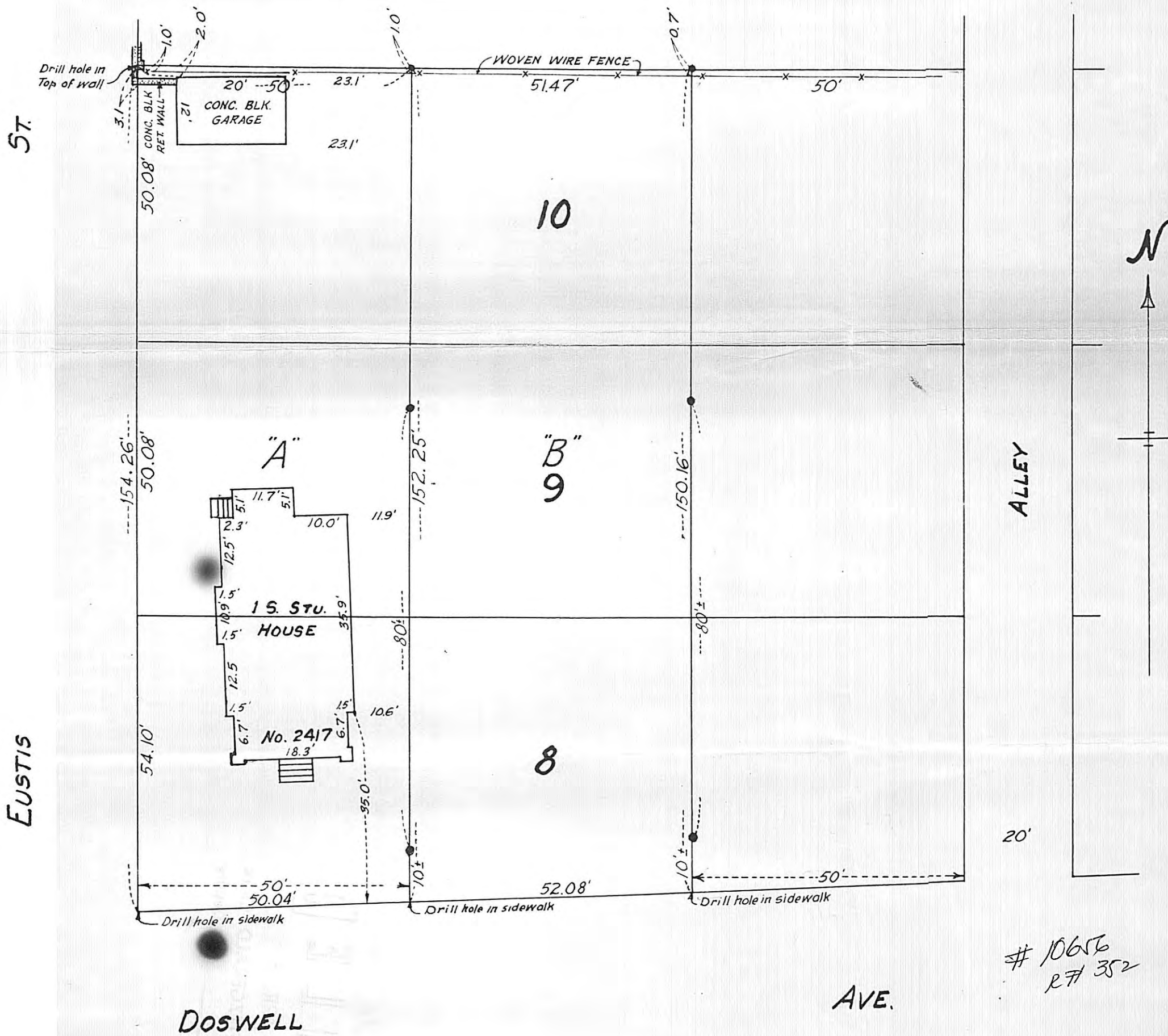
Surveyed February 13, 1963



Plat Scale - 1 in. = 20 ft. ● Indicates Iron Mont.

Description - "A" - The West 50 feet of Lots 8, 9 and 10, Block 28, St. Anthony Park North.

"B" - Lots 8, 9 and 10, Block 28, St. Anthony Park North, except the West 50 feet thereof and except the East 50 feet thereof.



# 10656  
R# 352