

10432

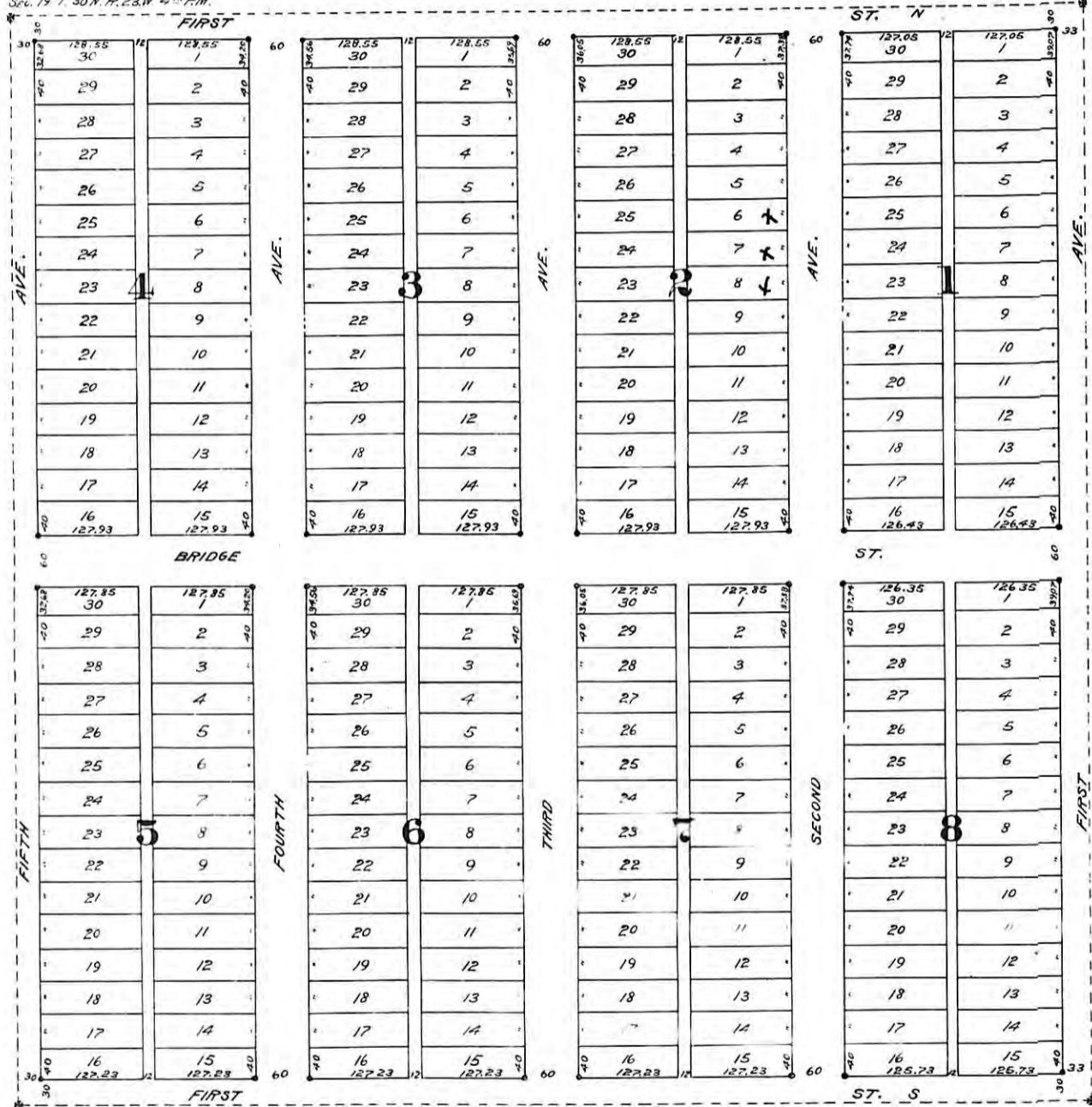
9747

Site # 10432

10432

NORTH WEST COR. OF N.E. 1/4 N.E. 1/4
Sec. 19, T. 30N, R. 23W, 4TH P.M.

NORTH EAST COR. OF N.E. 1/4 N.E. 1/4
Sec. 19, T. 30N, R. 23W, 4TH P.M.



SOUTH WEST COR. OF N.E. 1/4 N.E. 1/4
Sec. 19, T. 30N, R. 23W, 4TH P.M.

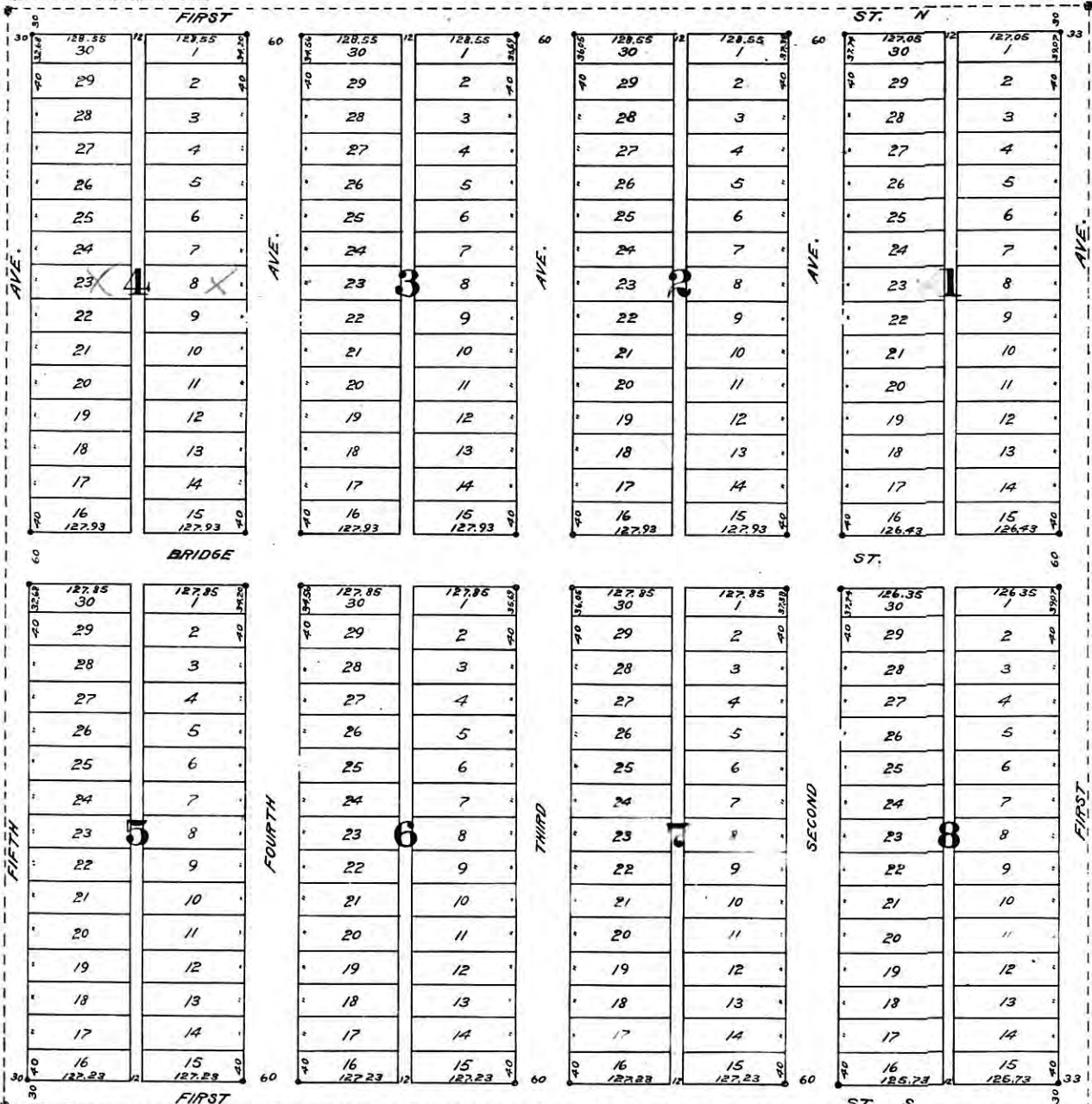
SOUTH EAST COR. OF N.E. 1/4 N.E. 1/4
Sec. 19, T. 30N, R. 23W, 4TH P.M.



file # 10432

North West Cor. Of N.E. 1/4, N.E. 1/4
Sec. 19, T. 30 N. R. 23 W. 4th P.M.

North East Cor. Of N.E. 1/4, N.E. 1/4
Sec. 19, T. 30 N. R. 23 W. 4th P.M.



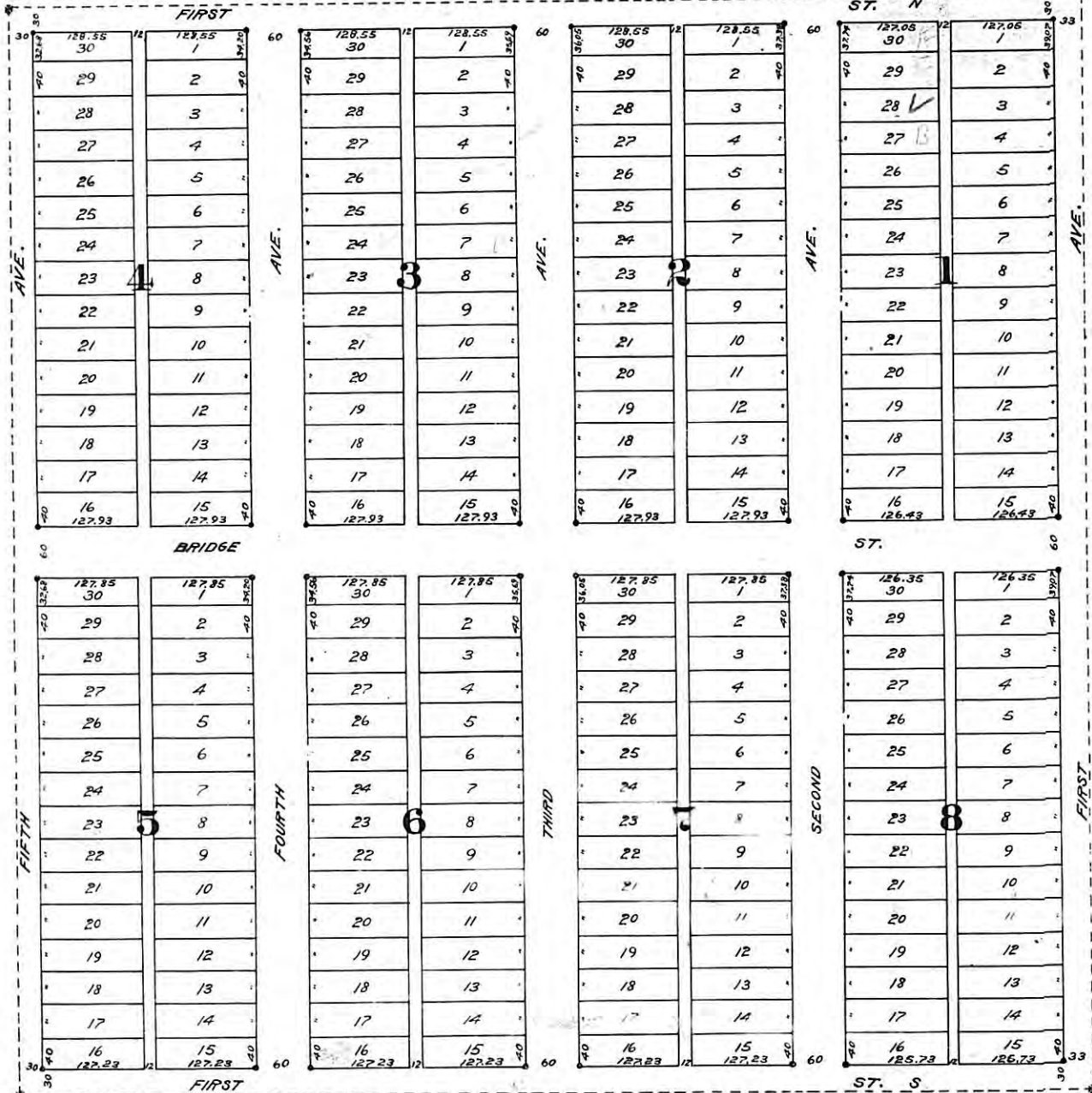
South West Cor. Of N.E. 1/4, N.E. 1/4
Sec. 19, T. 30 N. R. 23 W. 4th P.M.

South East Cor. Of N.E. 1/4, N.E. 1/4
Sec. 19, T. 30 N. R. 23 W. 4th P.M.

File # 10432

NORTH WEST COR. OF N.E. & N.E. 1/4
SEC. 19, T. 30 N. R. 23 W. 4TH P.M.

NORTH EAST COR. OF N.E. & N.E. 1/4
SEC. 19, T. 30 N. R. 23 W. 4TH P.M.



SOUTH WEST COR. OF N.E. & N.E. 1/4
SEC. 19, T. 30 N. R. 23 W. 4TH P.M.

SOUTH EAST COR. OF N.E. & N.E. 1/4
SEC. 19, T. 30 N. R. 23 W. 4TH P.M.