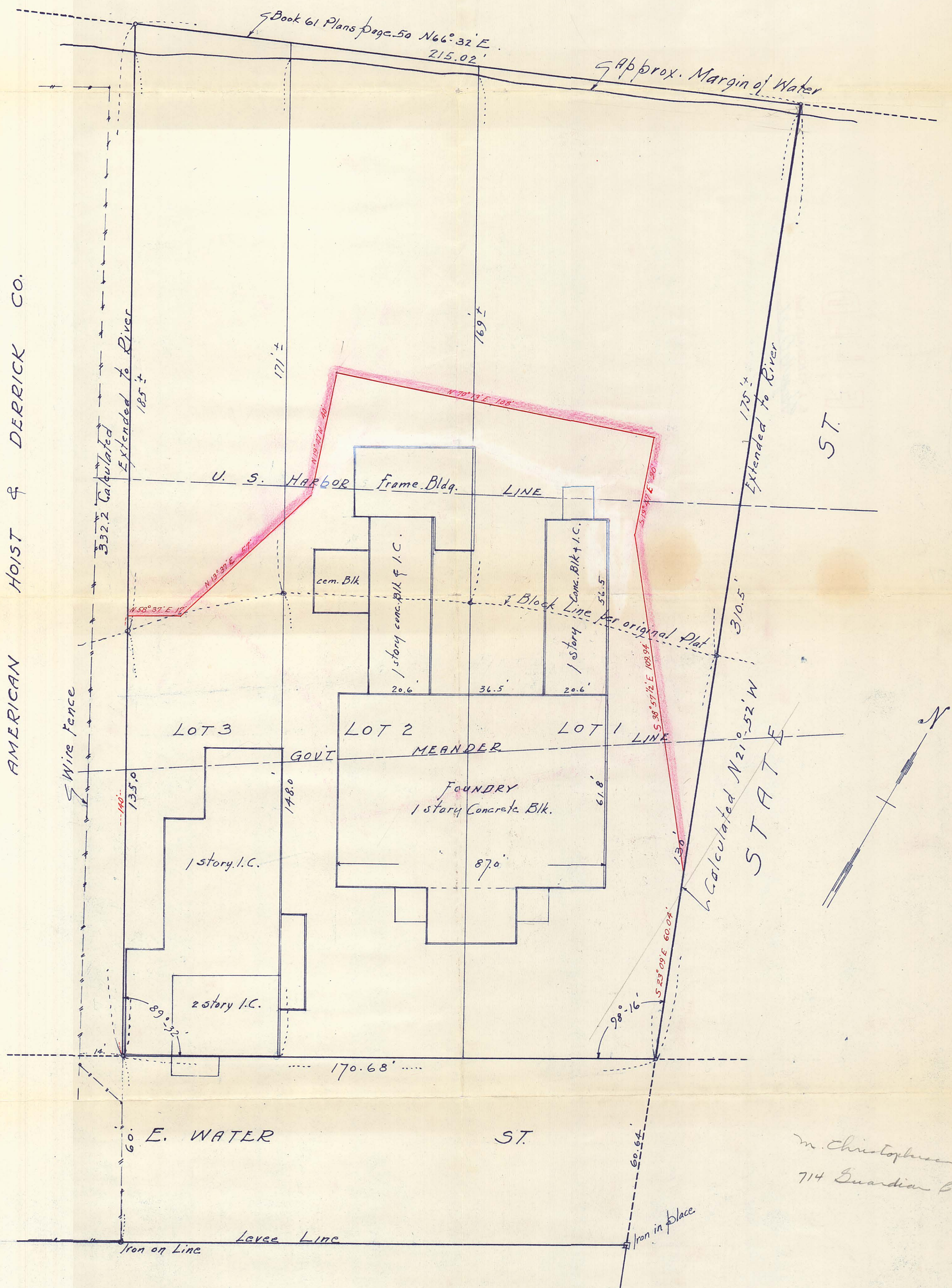


MISSISSIPPI RIVER



AMERICAN HOIST & DERRICK CO.

Scale 1 inch = 20 feet

We hereby certify that this map is a true and correct map of a survey of Lots 1-2 & 3 Block 1: Marshall's Addition to West St. Paul together with that parcel of land lying within the extended westerly line of Lot 3 and the extended easterly line of Lot 1 and said lines extended to the Mississippi River; as surveyed by us in February 1961.

Dated Feb. 7th 1961

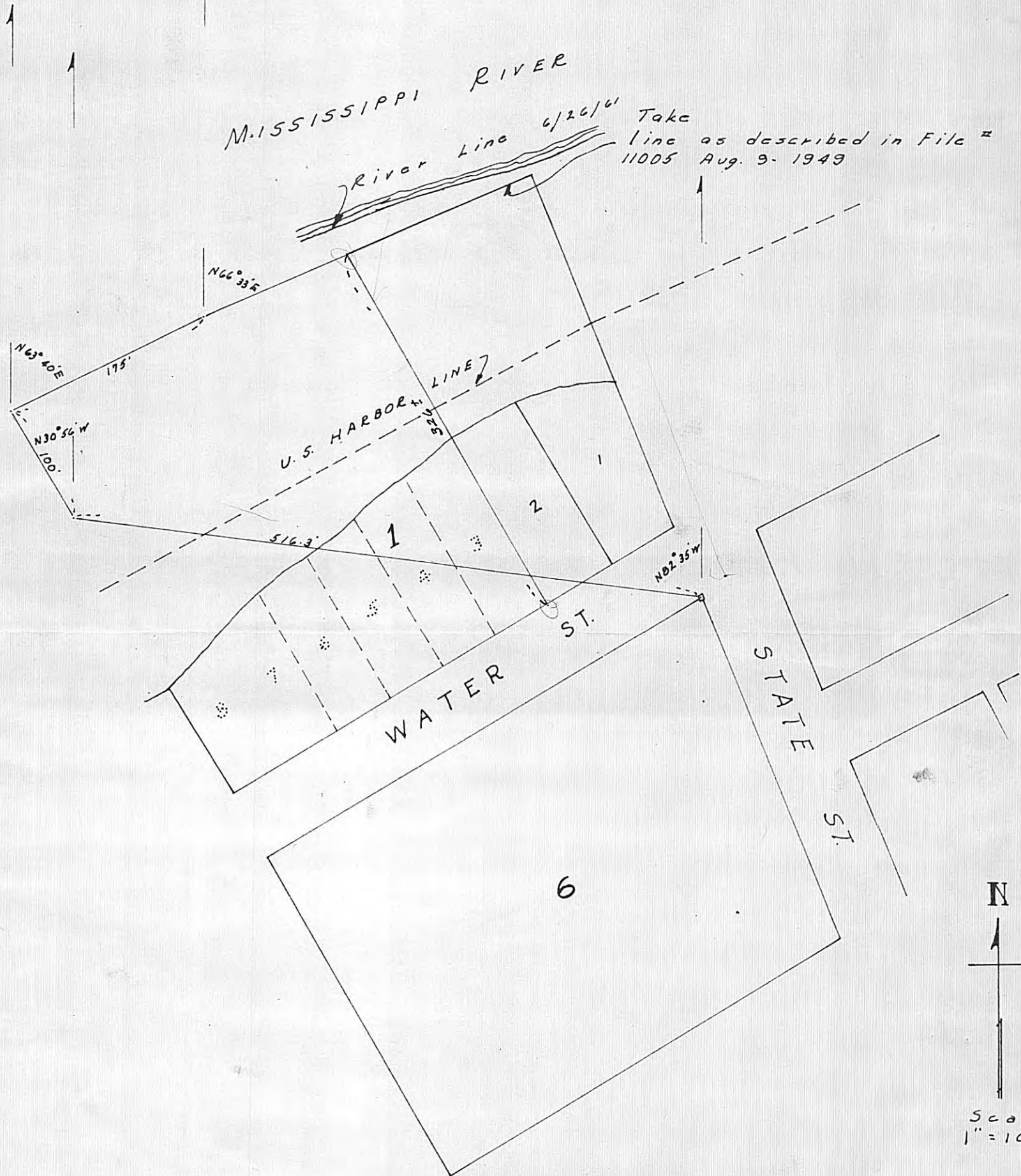
Franklyn Armstrong Co.
Engineers & Surveyors
By J. J. Armstrong

m. Christopherson
714 Guardian Bldg

Elder Dahn
Recording

File - 10321

Roll - 339



BLOCKS 1 & 2
MARSHALLS ADDITION

VALUATIONS BUREAU
River line P.W. F.B. # 1424-A
6/28/61