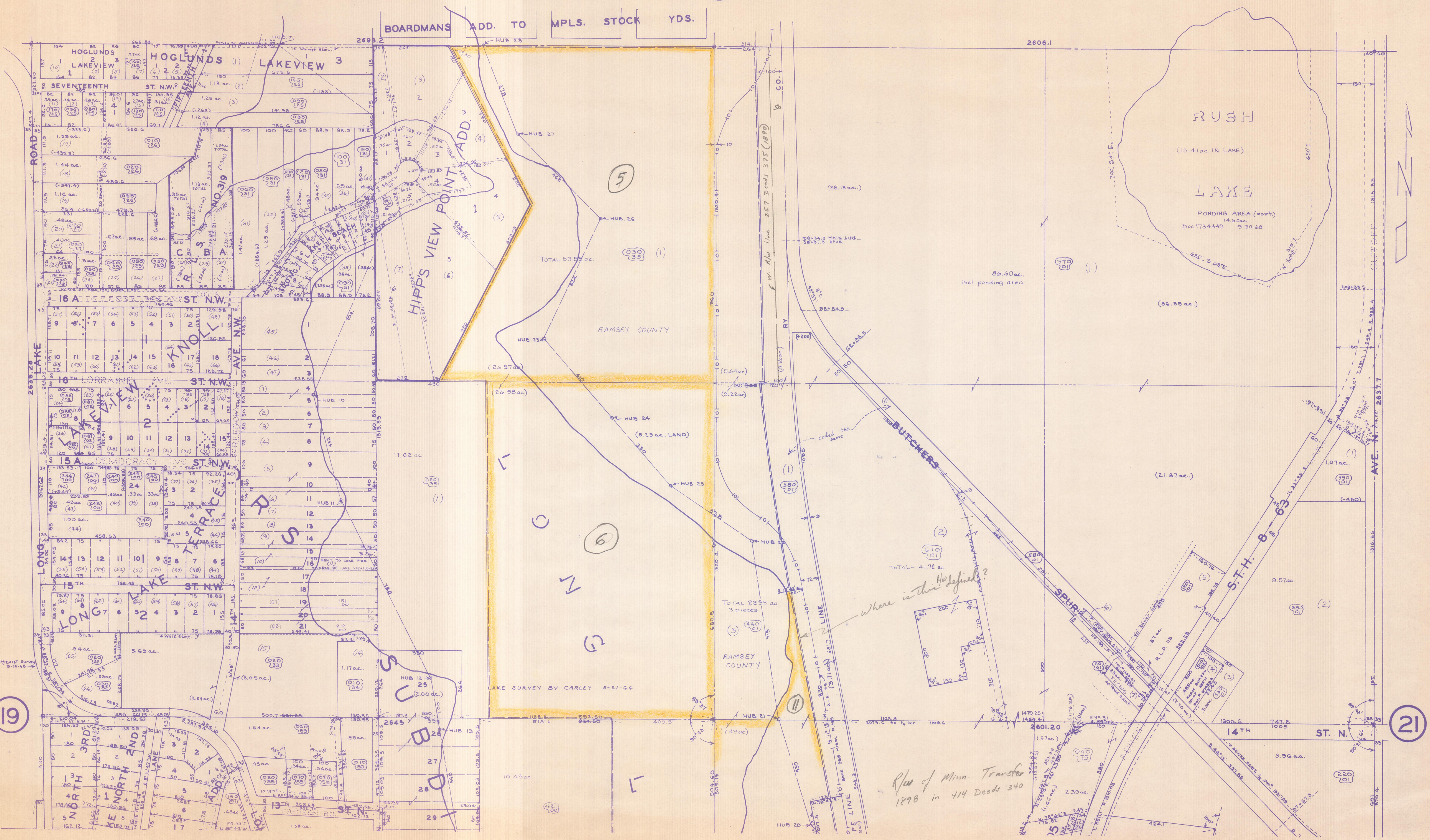


N 1/2 SEC. 20 T.30 R.23

17

THIS IS A COMPILATION OF RECORDS AS THEY APPEAR IN THE RAMSEY COUNTY OFFICES AFFECTING THE AREA SHOWN. THIS DRAWING IS TO BE USED ONLY FOR REFERENCE PURPOSES AND THE COUNTY IS NOT RESPONSIBLE FOR ANY INACCURACIES HEREIN CONTAINED.



19

21

Rev of Minn. Transfer
1898 in 414 Deeds 340