

SECTION 26 T. 30. R. 23.

23

VALENTINE LAKE

COUNTY ROAD

ROAD

Deluxe  
check C  
Addition

7/6/83  
VICTORIA  
VILLAGE  
(Gervais  
T.S. Addition)  
2nd Hunter  
I2  
(25Ac)

EVERGREEN VALLEY  
240767 (EX-100)

333 CRISTAL AVE.  
WIVIAN JOHNSON'S GARDENS  
ACRES

Schifsky  
B 3/2A A  
EVERGREEN VALLEY  
C1A 2ND  
ADDN  
2472974  
293.26

GEORGE REILING  
ADDN  
914184  
2233924

Jorgen C. Jensen  
40 Ac.

ISLAND LAKE HILLS  
F3  
F4  
F2

Summit  
B View  
Heights

T.J.V. Koolska, 20 Ac.  
GEORGE REILING  
THIRD  
ADD

SHOREVIEW  
TARGET  
ADDN  
2520224  
11-30-89

Wm F. Forester  
60 Ac.

DELUXE  
CORPORATION  
ADDITION  
2576501  
8-2-90

Julius T. Bye  
38.23 Ac.

JOHANNA

ST. PAUL

COUNTY ROAD

ROAD

OWASSO

PARK

26-30-23

35

27

25

\* Parcel F4, F5, F6  
Comm. 2 F

see 23 30 23

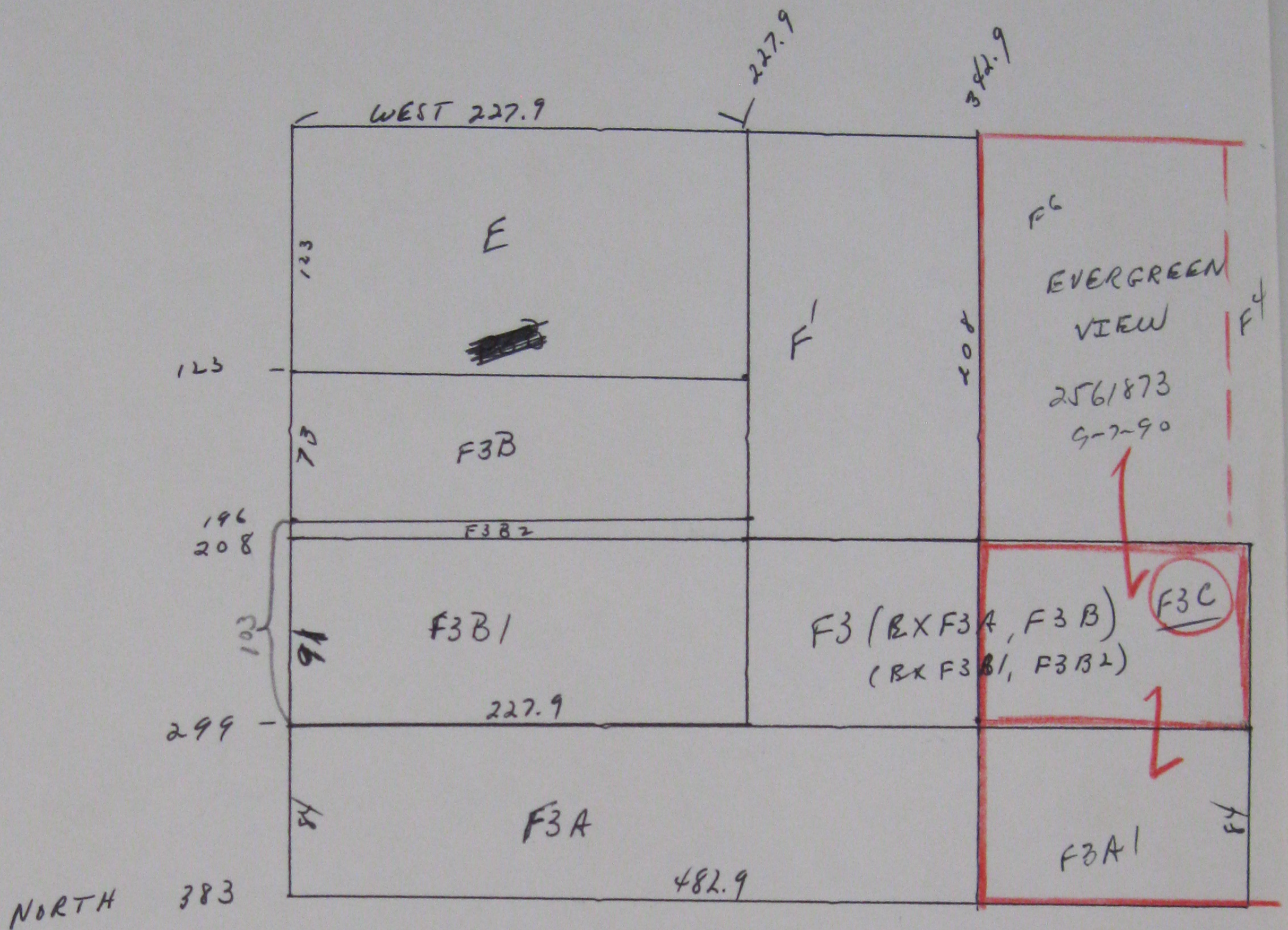
SEE MAP

(Not Measured)





NE NE 26-30-23



Note: Codes F4, F5, F6 originally came out of Parcel F2, Da # 1201182.  
 See County Plat Map (Plastic ~~Map~~ <sup>Packet</sup>) for detail.