

Part of NW 1/4 SECTION 22, T. 29, R. 23.

15

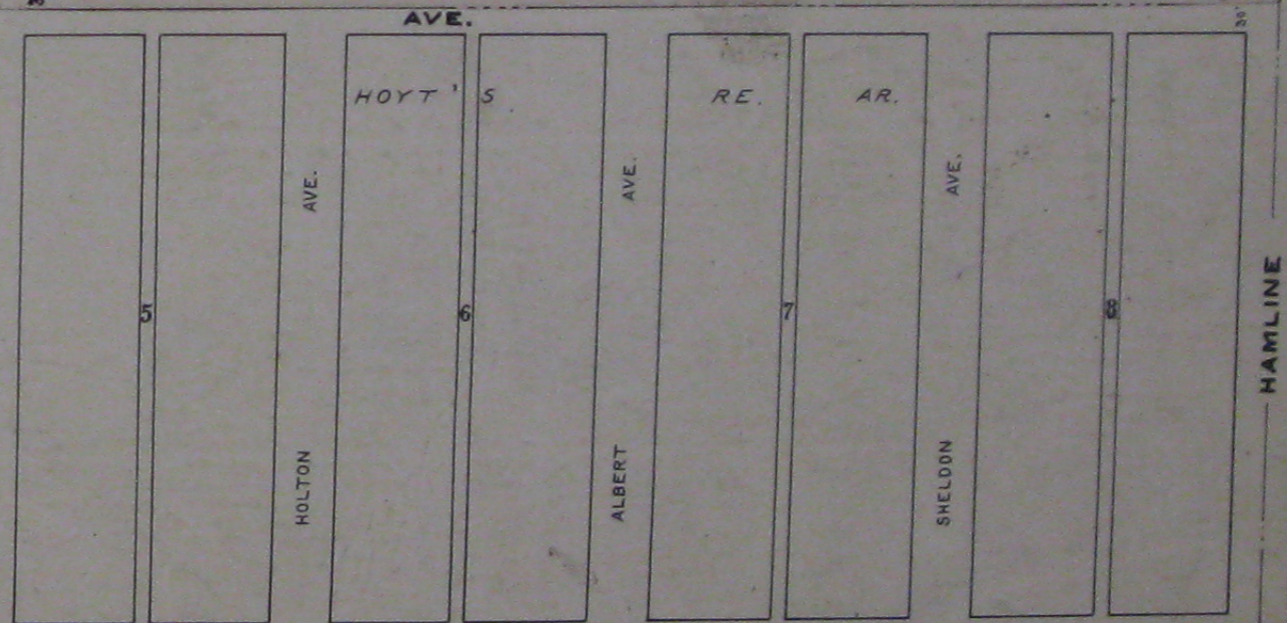
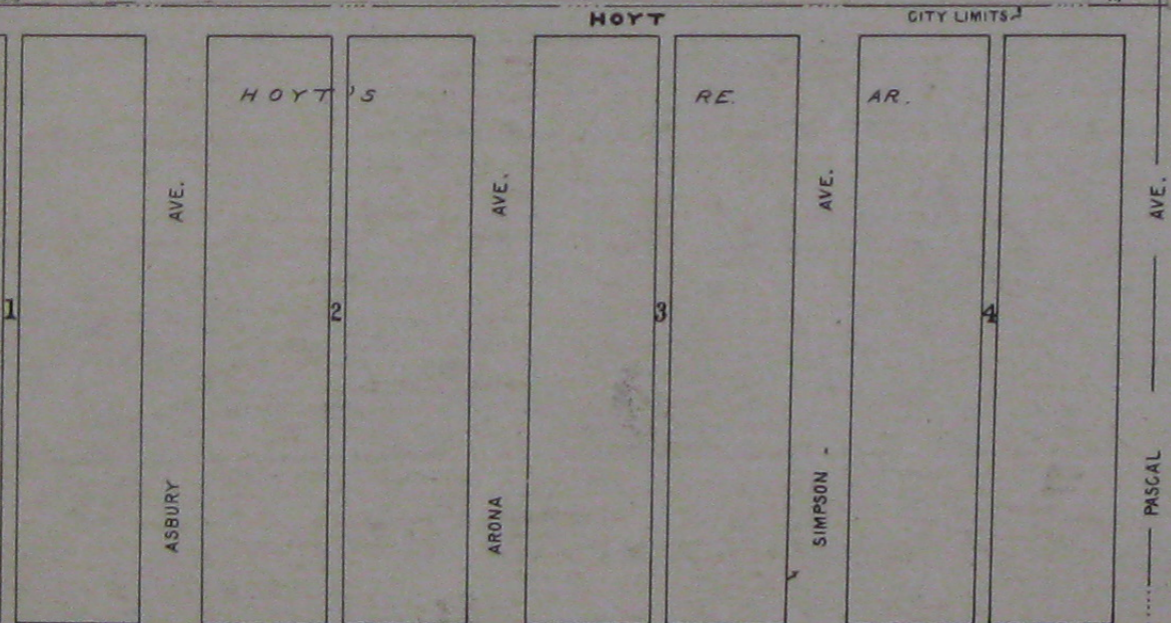
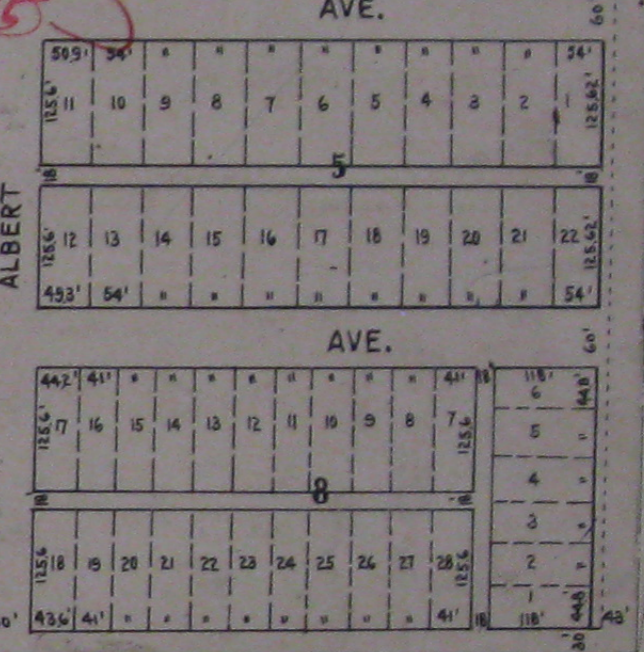
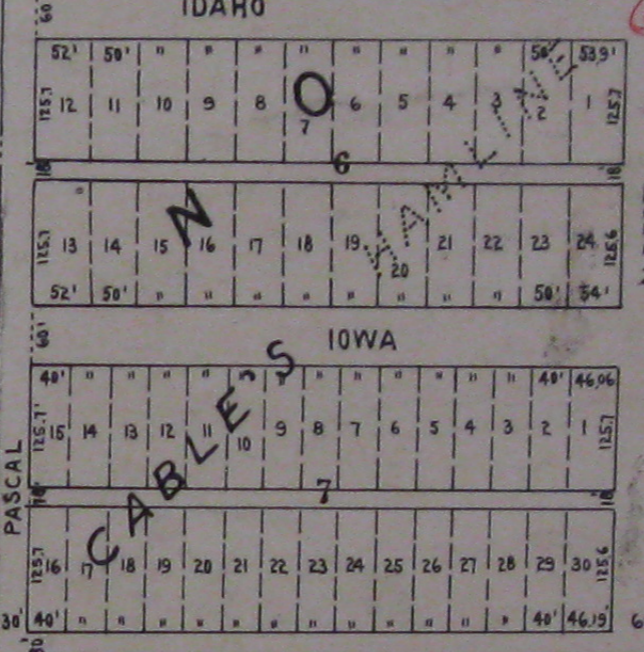
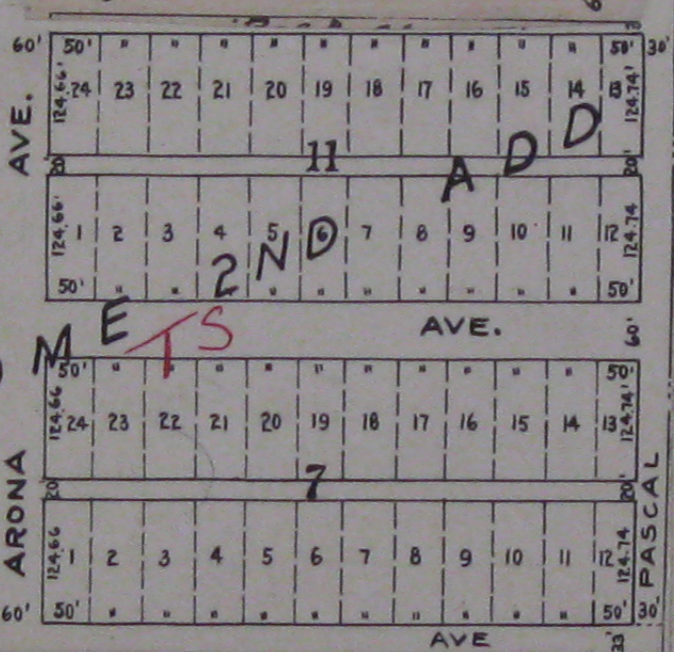
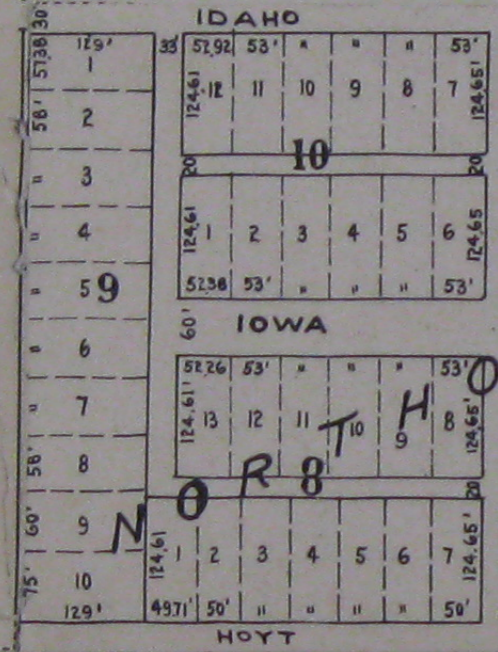
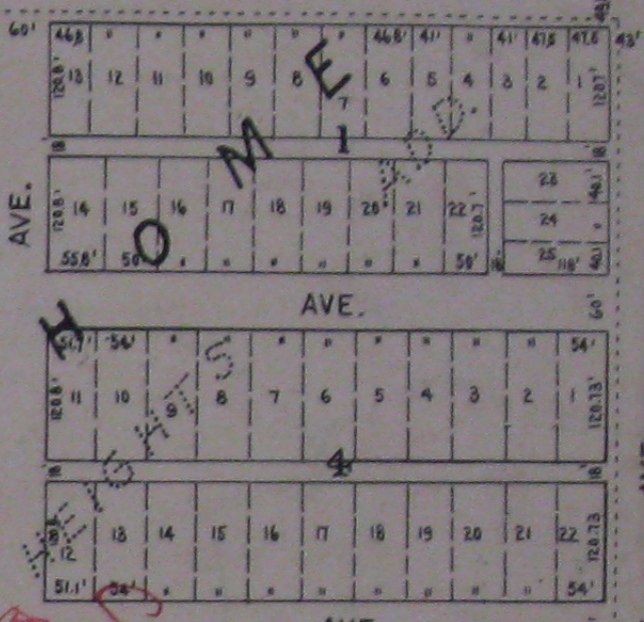
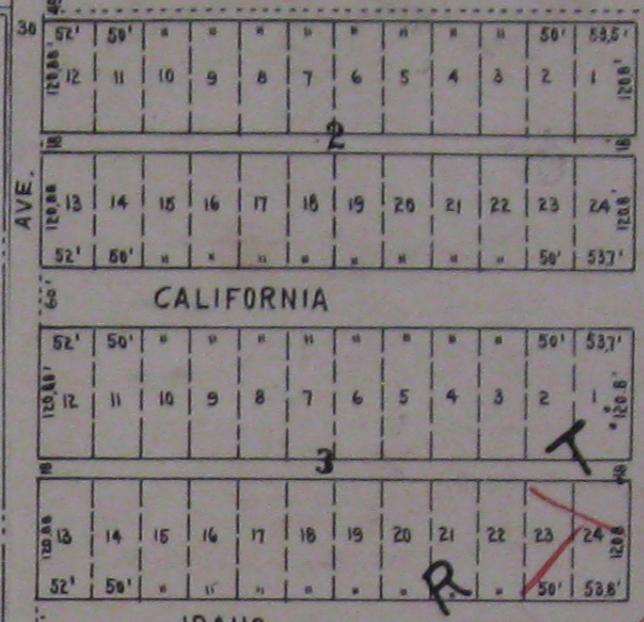
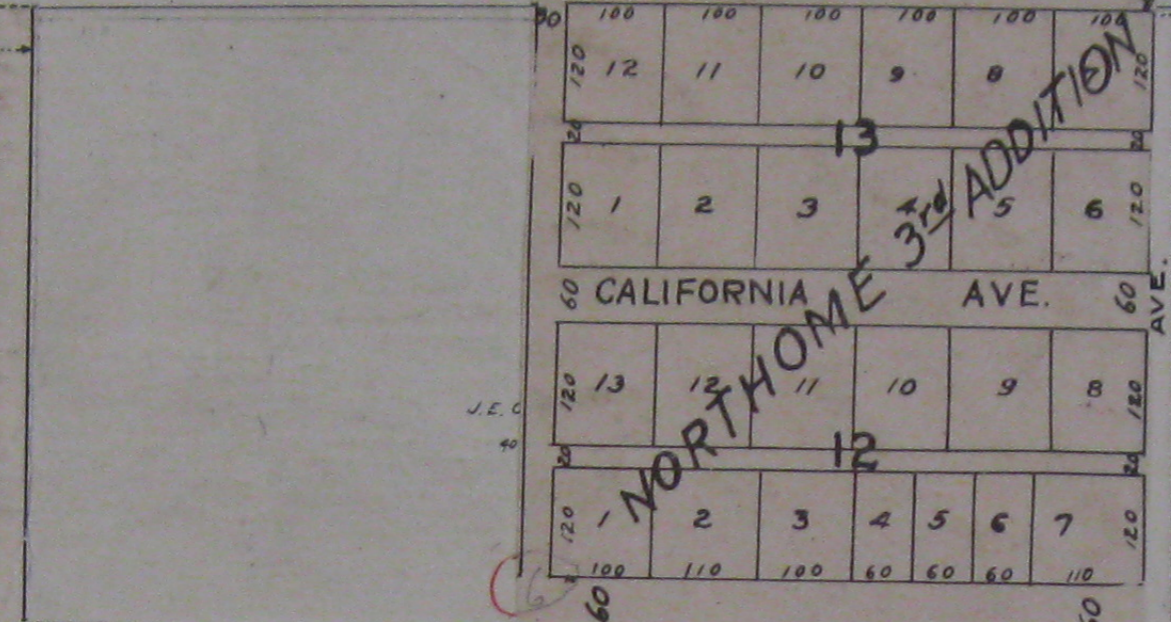
LARPEUR VILLAS

LARPEUR AVE.

COUNTY ROAD "A"

TRUNK HIGHWAY NO. 51

CROSSROADS COURT



STATE FAIR GROUNDS

SNELLING

ASBURY AVE.

ARONA AVE.

SIMPSON AVE.

PASCAL AVE.

HOLTON AVE.

ALBERT AVE.

SHELDON AVE.

HAMLIN AVE.

7

8

23