



Doc No **A04892798**

Certified, filed and/or recorded on
Jun 29, 2021 9:20 AM

Office of the County Recorder
Ramsey County, Minnesota
Todd J. Uecker, County Recorder
Heather L. Bestler, County Auditor and Treasurer

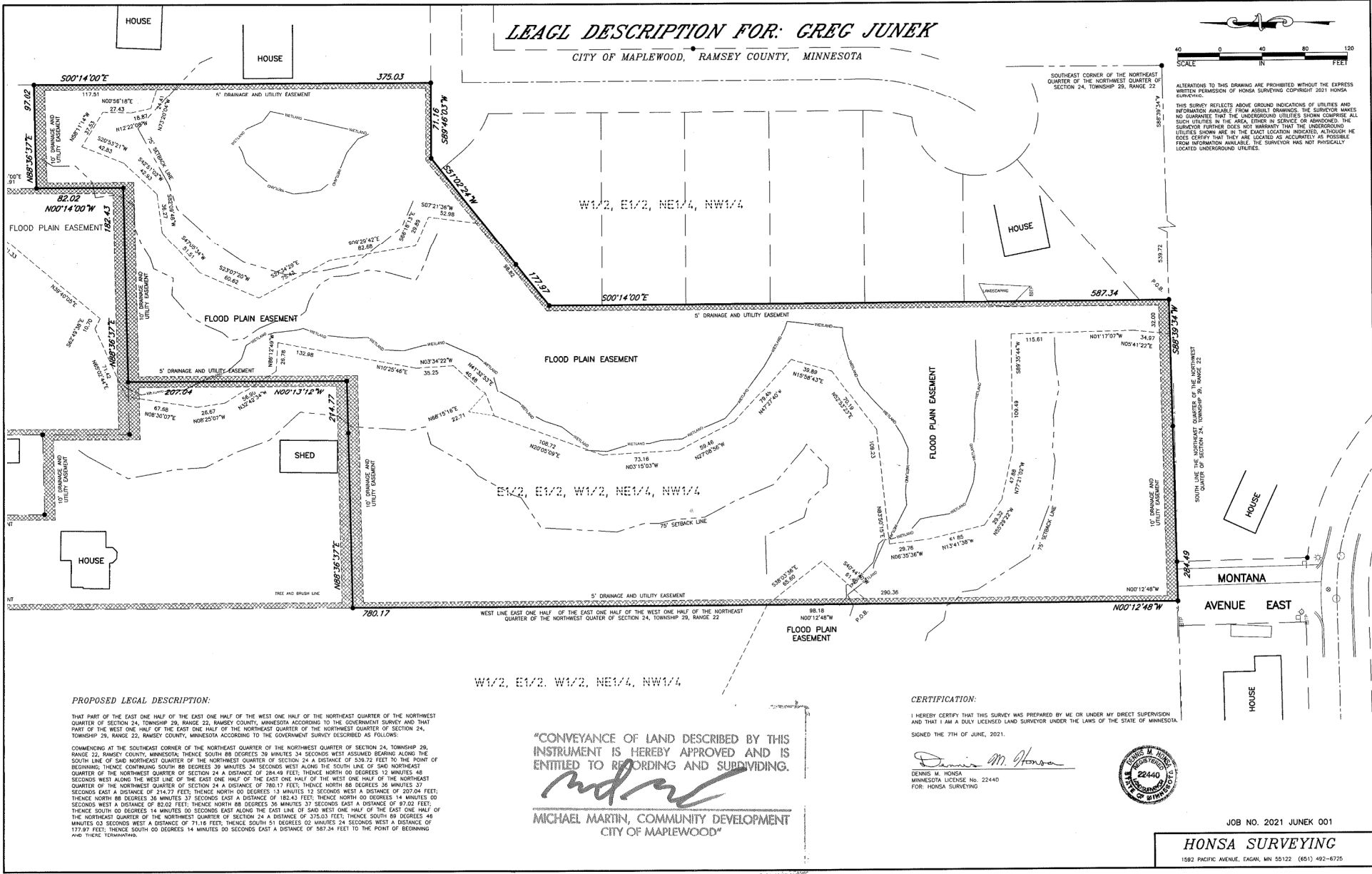
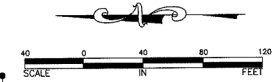
Deputy 315

Pkg ID 1458495D

Document Recording Fee Abstract	\$46.00
<i>Document Total</i>	\$46.00

LEAGL DESCRIPTION FOR: GREG JUNEK

CITY OF MAPLEWOOD, RAMSEY COUNTY, MINNESOTA



SOUTH-EAST CORNER OF THE NORTH-EAST QUARTER OF THE NORTHWEST QUARTER OF SECTION 24, TOWNSHIP 29, RANGE 22

ALTERATIONS TO THIS DRAWING ARE PROHIBITED WITHOUT THE EXPRESS WRITTEN PERMISSION OF HONSA SURVEYING COPYRIGHT 2021 HONSA SURVEYING.

THIS SURVEY REFLECTS ABOVE GROUND INDICATIONS OF UTILITIES AND INFORMATION AVAILABLE FROM ASSELT DRAWINGS. THE SURVEYOR MAKES NO GUARANTEE THAT THE UNDERGROUND UTILITIES SHOWN COMPRISE ALL SUCH UTILITIES IN THE AREA, EITHER IN SERVICE OR ABANDONED. THE SURVEYOR FURTHER DOES NOT WARRANT THAT THE UNDERGROUND UTILITIES SHOWN ARE IN THE EXACT LOCATION INDICATED, ALTHOUGH THE SURVEYOR DOES CERTIFY THAT THEY ARE LOCATED AS ACCURATELY AS POSSIBLE FROM INFORMATION AVAILABLE. THE SURVEYOR HAS NOT PHYSICALLY LOCATED UNDERGROUND UTILITIES.

HOUSE

HOUSE

HOUSE

HOUSE

HOUSE

HOUSE

HOUSE

HOUSE

HOUSE

HOUSE

HOUSE

HOUSE

HOUSE

HOUSE

HOUSE

HOUSE

HOUSE

HOUSE

HOUSE

HOUSE

HOUSE

HOUSE

HOUSE

HOUSE

HOUSE

HOUSE

HOUSE

HOUSE

HOUSE

HOUSE

HOUSE

HOUSE

HOUSE

HOUSE

HOUSE

HOUSE

HOUSE

HOUSE

HOUSE

HOUSE

HOUSE

HOUSE

HOUSE

HOUSE

HOUSE

HOUSE

HOUSE

HOUSE

HOUSE

HOUSE

HOUSE

HOUSE

HOUSE

HOUSE

HOUSE

HOUSE

HOUSE

HOUSE

HOUSE

HOUSE

HOUSE

HOUSE

HOUSE

HOUSE

HOUSE

HOUSE

HOUSE

HOUSE

HOUSE

HOUSE

HOUSE

HOUSE

HOUSE

HOUSE

HOUSE

HOUSE

HOUSE

HOUSE

HOUSE

HOUSE

HOUSE

HOUSE

HOUSE

HOUSE

HOUSE

HOUSE

HOUSE

HOUSE

HOUSE

HOUSE

HOUSE

HOUSE

HOUSE

HOUSE

HOUSE

HOUSE

HOUSE

HOUSE

HOUSE

HOUSE

HOUSE

HOUSE

HOUSE

HOUSE

HOUSE

HOUSE

HOUSE

HOUSE

HOUSE

HOUSE

HOUSE

HOUSE

HOUSE

HOUSE

HOUSE

HOUSE

HOUSE

HOUSE

HOUSE

HOUSE

HOUSE

HOUSE

HOUSE

HOUSE

HOUSE

HOUSE

HOUSE

HOUSE

HOUSE

HOUSE

HOUSE

HOUSE

HOUSE

HOUSE

HOUSE

HOUSE

HOUSE

HOUSE

HOUSE

HOUSE

HOUSE

HOUSE

HOUSE

HOUSE

HOUSE

HOUSE

HOUSE

HOUSE

HOUSE

HOUSE

HOUSE

HOUSE

HOUSE

HOUSE

HOUSE

HOUSE

HOUSE

HOUSE

HOUSE

HOUSE

HOUSE

HOUSE

HOUSE

HOUSE

HOUSE

HOUSE

HOUSE

HOUSE

HOUSE

HOUSE

HOUSE

HOUSE

HOUSE

HOUSE

HOUSE

HOUSE

HOUSE

HOUSE

HOUSE

HOUSE

HOUSE

HOUSE

HOUSE

HOUSE

HOUSE

HOUSE

HOUSE

HOUSE

HOUSE

HOUSE

PROPOSED LEGAL DESCRIPTION:

THAT PART OF THE EAST ONE HALF OF THE EAST ONE HALF OF THE WEST ONE HALF OF THE NORTH-EAST QUARTER OF THE NORTHWEST QUARTER OF SECTION 24, TOWNSHIP 29, RANGE 22, RAMSEY COUNTY, MINNESOTA ACCORDING TO THE GOVERNMENT SURVEY DESCRIBED AS FOLLOWS:

COMMENCING AT THE SOUTH-EAST CORNER OF THE NORTH-EAST QUARTER OF THE NORTHWEST QUARTER OF SECTION 24, TOWNSHIP 29, RANGE 22, RAMSEY COUNTY, MINNESOTA; THENCE SOUTH 88 DEGREES 39 MINUTES 34 SECONDS WEST ASSUMED BEARING ALONG THE SOUTH LINE OF SAID NORTH-EAST QUARTER OF THE NORTHWEST QUARTER OF SECTION 24 A DISTANCE OF 539.72 FEET TO THE POINT OF BEGINNING; THENCE CONTINUING SOUTH 88 DEGREES 39 MINUTES 34 SECONDS WEST ALONG THE SOUTH LINE OF SAID NORTH-EAST QUARTER OF THE NORTHWEST QUARTER OF SECTION 24 A DISTANCE OF 284.49 FEET; THENCE NORTH 00 DEGREES 12 MINUTES 48 SECONDS WEST ALONG THE WEST LINE OF THE EAST ONE HALF OF THE EAST ONE HALF OF THE NORTHWEST QUARTER OF THE NORTHWEST QUARTER OF SECTION 24 A DISTANCE OF 780.17 FEET; THENCE NORTH 86 DEGREES 35 MINUTES 37 SECONDS EAST A DISTANCE OF 274.77 FEET; THENCE NORTH 00 DEGREES 13 MINUTES 12 SECONDS WEST A DISTANCE OF 207.04 FEET; THENCE NORTH 88 DEGREES 36 MINUTES 27 SECONDS EAST A DISTANCE OF 182.43 FEET; THENCE NORTH 00 DEGREES 14 MINUTES 00 SECONDS WEST A DISTANCE OF 82.02 FEET; THENCE NORTH 88 DEGREES 36 MINUTES 37 SECONDS EAST A DISTANCE OF 87.02 FEET; THENCE SOUTH 00 DEGREES 14 MINUTES 00 SECONDS EAST ALONG THE EAST LINE OF SAID WEST ONE HALF OF THE EAST ONE HALF OF THE NORTH-EAST QUARTER OF THE NORTHWEST QUARTER OF SECTION 24 A DISTANCE OF 375.03 FEET; THENCE SOUTH 89 DEGREES 48 MINUTES 03 SECONDS WEST A DISTANCE OF 71.16 FEET; THENCE SOUTH 51 DEGREES 02 MINUTES 24 SECONDS WEST A DISTANCE OF 177.97 FEET; THENCE SOUTH 00 DEGREES 14 MINUTES 00 SECONDS EAST A DISTANCE OF 587.34 FEET TO THE POINT OF BEGINNING AND THENCE THEREAFTER.

"CONVEYANCE OF LAND DESCRIBED BY THIS INSTRUMENT IS HEREBY APPROVED AND IS ENTITLED TO RECORDING AND SUBDIVIDING."

Michael Martin

MICHAEL MARTIN, COMMUNITY DEVELOPMENT
CITY OF MAPLEWOOD

CERTIFICATION:

I HEREBY CERTIFY THAT THIS SURVEY WAS PREPARED BY ME OR UNDER MY DIRECT SUPERVISION AND THAT I AM A DULY LICENSED LAND SURVEYOR UNDER THE LAWS OF THE STATE OF MINNESOTA.

SIGNED THE 7TH OF JUNE, 2021.

Dennis M. Honsa

DENNIS M. HONSA
MINNESOTA LICENSE NO. 22440
FOR: HONSA SURVEYING



JOB NO. 2021 JUNEK 001

HONSA SURVEYING

1582 PINECREST AVENUE, EDINA, MN 55122 (651) 492-6725