



Doc No **A04858945**

Certified, filed and/or recorded on  
Jan 21, 2021 9:00 AM

Office of the County Recorder  
Ramsey County, Minnesota  
Todd J. Uecker, County Recorder  
Christopher A. Samuel, County Auditor and Treasurer

Deputy 501

Pkg ID 1418202D

Document Recording Fee Abstract	\$46.00
<b><i>Document Total</i></b>	<b>\$46.00</b>

**CERTIFICATE OF SURVEY FOR:  
CHARLIE NEIMEYER**

**LEGEND**

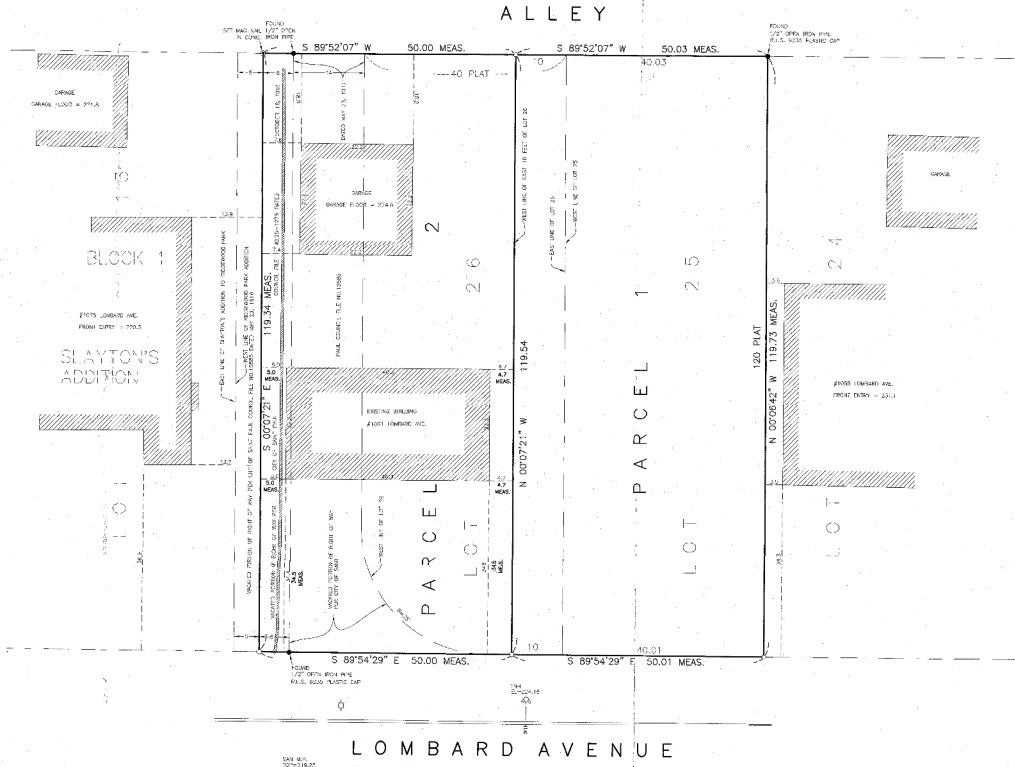
- 217 --- Flag
- 218 --- 6" dia. P.C.
- 219 --- 6" dia. P.C. (curb)
- 220 --- 6" dia. P.C. (curb)
- 221 --- 6" dia. P.C. (curb)
- 222 --- 6" dia. P.C. (curb)
- 223 --- 6" dia. P.C. (curb)
- 224 --- 6" dia. P.C. (curb)
- 225 --- 6" dia. P.C. (curb)
- 226 --- 6" dia. P.C. (curb)
- 227 --- 6" dia. P.C. (curb)
- 228 --- 6" dia. P.C. (curb)
- 229 --- 6" dia. P.C. (curb)
- 230 --- 6" dia. P.C. (curb)
- 231 --- 6" dia. P.C. (curb)
- 232 --- 6" dia. P.C. (curb)
- 233 --- 6" dia. P.C. (curb)
- 234 --- 6" dia. P.C. (curb)
- 235 --- 6" dia. P.C. (curb)
- 236 --- 6" dia. P.C. (curb)
- 237 --- 6" dia. P.C. (curb)
- 238 --- 6" dia. P.C. (curb)
- 239 --- 6" dia. P.C. (curb)
- 240 --- 6" dia. P.C. (curb)
- 241 --- 6" dia. P.C. (curb)
- 242 --- 6" dia. P.C. (curb)
- 243 --- 6" dia. P.C. (curb)
- 244 --- 6" dia. P.C. (curb)
- 245 --- 6" dia. P.C. (curb)
- 246 --- 6" dia. P.C. (curb)
- 247 --- 6" dia. P.C. (curb)
- 248 --- 6" dia. P.C. (curb)
- 249 --- 6" dia. P.C. (curb)
- 250 --- 6" dia. P.C. (curb)
- 251 --- 6" dia. P.C. (curb)
- 252 --- 6" dia. P.C. (curb)
- 253 --- 6" dia. P.C. (curb)
- 254 --- 6" dia. P.C. (curb)
- 255 --- 6" dia. P.C. (curb)
- 256 --- 6" dia. P.C. (curb)
- 257 --- 6" dia. P.C. (curb)
- 258 --- 6" dia. P.C. (curb)
- 259 --- 6" dia. P.C. (curb)
- 260 --- 6" dia. P.C. (curb)
- 261 --- 6" dia. P.C. (curb)
- 262 --- 6" dia. P.C. (curb)
- 263 --- 6" dia. P.C. (curb)
- 264 --- 6" dia. P.C. (curb)
- 265 --- 6" dia. P.C. (curb)
- 266 --- 6" dia. P.C. (curb)
- 267 --- 6" dia. P.C. (curb)
- 268 --- 6" dia. P.C. (curb)
- 269 --- 6" dia. P.C. (curb)
- 270 --- 6" dia. P.C. (curb)
- 271 --- 6" dia. P.C. (curb)
- 272 --- 6" dia. P.C. (curb)
- 273 --- 6" dia. P.C. (curb)
- 274 --- 6" dia. P.C. (curb)
- 275 --- 6" dia. P.C. (curb)
- 276 --- 6" dia. P.C. (curb)
- 277 --- 6" dia. P.C. (curb)
- 278 --- 6" dia. P.C. (curb)
- 279 --- 6" dia. P.C. (curb)
- 280 --- 6" dia. P.C. (curb)
- 281 --- 6" dia. P.C. (curb)
- 282 --- 6" dia. P.C. (curb)
- 283 --- 6" dia. P.C. (curb)
- 284 --- 6" dia. P.C. (curb)
- 285 --- 6" dia. P.C. (curb)
- 286 --- 6" dia. P.C. (curb)
- 287 --- 6" dia. P.C. (curb)
- 288 --- 6" dia. P.C. (curb)
- 289 --- 6" dia. P.C. (curb)
- 290 --- 6" dia. P.C. (curb)
- 291 --- 6" dia. P.C. (curb)
- 292 --- 6" dia. P.C. (curb)
- 293 --- 6" dia. P.C. (curb)
- 294 --- 6" dia. P.C. (curb)
- 295 --- 6" dia. P.C. (curb)
- 296 --- 6" dia. P.C. (curb)
- 297 --- 6" dia. P.C. (curb)
- 298 --- 6" dia. P.C. (curb)
- 299 --- 6" dia. P.C. (curb)
- 300 --- 6" dia. P.C. (curb)
- 301 --- 6" dia. P.C. (curb)
- 302 --- 6" dia. P.C. (curb)
- 303 --- 6" dia. P.C. (curb)
- 304 --- 6" dia. P.C. (curb)
- 305 --- 6" dia. P.C. (curb)
- 306 --- 6" dia. P.C. (curb)
- 307 --- 6" dia. P.C. (curb)
- 308 --- 6" dia. P.C. (curb)
- 309 --- 6" dia. P.C. (curb)
- 310 --- 6" dia. P.C. (curb)
- 311 --- 6" dia. P.C. (curb)
- 312 --- 6" dia. P.C. (curb)
- 313 --- 6" dia. P.C. (curb)
- 314 --- 6" dia. P.C. (curb)
- 315 --- 6" dia. P.C. (curb)
- 316 --- 6" dia. P.C. (curb)
- 317 --- 6" dia. P.C. (curb)
- 318 --- 6" dia. P.C. (curb)
- 319 --- 6" dia. P.C. (curb)
- 320 --- 6" dia. P.C. (curb)
- 321 --- 6" dia. P.C. (curb)
- 322 --- 6" dia. P.C. (curb)
- 323 --- 6" dia. P.C. (curb)
- 324 --- 6" dia. P.C. (curb)
- 325 --- 6" dia. P.C. (curb)
- 326 --- 6" dia. P.C. (curb)
- 327 --- 6" dia. P.C. (curb)
- 328 --- 6" dia. P.C. (curb)
- 329 --- 6" dia. P.C. (curb)
- 330 --- 6" dia. P.C. (curb)
- 331 --- 6" dia. P.C. (curb)
- 332 --- 6" dia. P.C. (curb)
- 333 --- 6" dia. P.C. (curb)
- 334 --- 6" dia. P.C. (curb)
- 335 --- 6" dia. P.C. (curb)
- 336 --- 6" dia. P.C. (curb)
- 337 --- 6" dia. P.C. (curb)
- 338 --- 6" dia. P.C. (curb)
- 339 --- 6" dia. P.C. (curb)
- 340 --- 6" dia. P.C. (curb)
- 341 --- 6" dia. P.C. (curb)
- 342 --- 6" dia. P.C. (curb)
- 343 --- 6" dia. P.C. (curb)
- 344 --- 6" dia. P.C. (curb)
- 345 --- 6" dia. P.C. (curb)
- 346 --- 6" dia. P.C. (curb)
- 347 --- 6" dia. P.C. (curb)
- 348 --- 6" dia. P.C. (curb)
- 349 --- 6" dia. P.C. (curb)
- 350 --- 6" dia. P.C. (curb)
- 351 --- 6" dia. P.C. (curb)
- 352 --- 6" dia. P.C. (curb)
- 353 --- 6" dia. P.C. (curb)
- 354 --- 6" dia. P.C. (curb)
- 355 --- 6" dia. P.C. (curb)
- 356 --- 6" dia. P.C. (curb)
- 357 --- 6" dia. P.C. (curb)
- 358 --- 6" dia. P.C. (curb)
- 359 --- 6" dia. P.C. (curb)
- 360 --- 6" dia. P.C. (curb)
- 361 --- 6" dia. P.C. (curb)
- 362 --- 6" dia. P.C. (curb)
- 363 --- 6" dia. P.C. (curb)
- 364 --- 6" dia. P.C. (curb)
- 365 --- 6" dia. P.C. (curb)
- 366 --- 6" dia. P.C. (curb)
- 367 --- 6" dia. P.C. (curb)
- 368 --- 6" dia. P.C. (curb)
- 369 --- 6" dia. P.C. (curb)
- 370 --- 6" dia. P.C. (curb)
- 371 --- 6" dia. P.C. (curb)
- 372 --- 6" dia. P.C. (curb)
- 373 --- 6" dia. P.C. (curb)
- 374 --- 6" dia. P.C. (curb)
- 375 --- 6" dia. P.C. (curb)
- 376 --- 6" dia. P.C. (curb)
- 377 --- 6" dia. P.C. (curb)
- 378 --- 6" dia. P.C. (curb)
- 379 --- 6" dia. P.C. (curb)
- 380 --- 6" dia. P.C. (curb)
- 381 --- 6" dia. P.C. (curb)
- 382 --- 6" dia. P.C. (curb)
- 383 --- 6" dia. P.C. (curb)
- 384 --- 6" dia. P.C. (curb)
- 385 --- 6" dia. P.C. (curb)
- 386 --- 6" dia. P.C. (curb)
- 387 --- 6" dia. P.C. (curb)
- 388 --- 6" dia. P.C. (curb)
- 389 --- 6" dia. P.C. (curb)
- 390 --- 6" dia. P.C. (curb)
- 391 --- 6" dia. P.C. (curb)
- 392 --- 6" dia. P.C. (curb)
- 393 --- 6" dia. P.C. (curb)
- 394 --- 6" dia. P.C. (curb)
- 395 --- 6" dia. P.C. (curb)
- 396 --- 6" dia. P.C. (curb)
- 397 --- 6" dia. P.C. (curb)
- 398 --- 6" dia. P.C. (curb)
- 399 --- 6" dia. P.C. (curb)
- 400 --- 6" dia. P.C. (curb)

LEGAL DESCRIPTION PARCEL 1:  
Lot 25 and the west 10 feet of Lot 26 Block 1, Ridgewood Park Addition to the City of St. Paul, Ramsey County, Minnesota.

LEGAL DESCRIPTION PARCEL 2:  
All of Lot 26, except the west 10 feet thereof, Block 1, Ridgewood Park Addition to the City of St. Paul, together with that portion of the street shown on the plat 20 feet wide and 20 feet deep which is owned by the City of St. Paul, Ramsey County, Minnesota.

Conveyance of land described by the instrument is hereby approved and is certified to recording as follows:

CITY OF SAINT PAUL  
By: *Paul A. Wenzel* 1-5-21  
Planning Administrator Date



NOTES:  
-If existing building dimensions are measured to the finished walls and not the building corners.  
-No results was made for city easements.  
-The location of all utility lines are from other observed records or as they exist and/or from data furnished by the utility companies and the abutting lots. City easements should be noted for record before closing the transaction.



<b>JOB NO.</b> 467-20	<b>SCALE</b> 1" = 10'	<b>DATE</b> 11/27/2020	<b>REVISIONS</b>	<b>SITE ADDRESS</b> 801 LOMBARD AVE. ST. PAUL, MN	<b>BENCHMARK</b> 17.3. Network of marked pins was used for this survey.	<p>I hereby certify that this survey, plan, or report was prepared by me or under my direct supervision and that I am a duly registered and licensed surveyor under the laws of the State of Minnesota.</p> <p><b>W. BROWN LAND SURVEYING, INC.</b> 3030 CEDAR AVENUE, SUITE 228 EDENPRATON, MINNESOTA DUN (652) 854-4355 FAX (652) 854-4359 EMAIL: INFO@WBROWNSURVEYING.COM</p>
<b>DRAWN BY</b> 171/13	<b>CHECKED BY</b>	<b>REVISIONS PER CITY OF SAINT PAUL</b>	<b>REVISIONS LEGAL OFFICER FROM CITY OF SAINT PAUL</b>	<b>EXISTING PROPERTY DESCRIPTION</b> Lot 26 Block 1, Ridgewood Park Addition to the City of St. Paul together with that portion of the street shown on the plat 20 feet wide and 20 feet deep which is owned by the City of St. Paul, Ramsey County, Minnesota.	<b>DATE</b> 12-31-2020	
<b>SHEET</b> 1 of 1						