

Doc No **A04673425**

Certified, filed and/or recorded on
Aug 23, 2017 4:10 PM

Office of the County Recorder
Ramsey County, Minnesota
Susan R Roth, County Recorder
Christopher A. Samuel, County Auditor and Treasurer
Deputy 708 Pkg ID 1205797C

| | |
|---------------------------------|-----------------------|
| Document Recording Fee Abstract | \$46.00 |
| <i>Document Total</i> | <i>\$46.00</i> |

PROPOSED DESCRIPTIONS

A. PARCEL 3 NORTH (After Boundary Adjustment)

Lots 1 through 30, inclusive, Block 1, E. M. Mackubin's Addition to Saint Paul, Ramsey County, Minnesota, together with that part of vacant alley lying North of said Block 1, together with that part of vacant Bush Avenue formerly Flagler Street, per the recorded Plat of E. M. Mackubin's Addition to Saint Paul, Ramsey County, Minnesota and Hill's Addition to St. Paul, Ramsey County, Minnesota lying East of the West line of Mendota Street and West of the West line of Forest Street, together with that part of the East and West Halves of vacant Mendota Street per said recorded Plat of E. M. Mackubin's Addition to Saint Paul and Hill's Addition to St. Paul, lying South of the South side-survey of the Union Pacific Railroad, North of the North line of said Bush Avenue and East and South of the following described line:

Commencing at the Southeast corner of Lot 1, Block 1, said Hill's Addition to St. Paul, thence North, along the East line of said Lot 1, a distance of 22.18 feet to the point of beginning of the line to be described; thence Eastward at a right angle 60.00 feet thence Northward at a right angle 173.03 feet, more or less, to the South Right-of-Way of the Union Pacific Railroad; and East and South of the following described line:

AND
Those parts of Lots 5 through 13, inclusive, and the alley, all in Block 2, E. M. Mackubin's Addition to Saint Paul, Ramsey County, Minnesota and that part of the East and West Halves of said vacant Mendota Street lying South of the South line of said Bush Avenue all lying West and North of the following described line:

Commencing at the Northwest corner of said Block 2, thence North 89 degrees 33 minutes 20 seconds East, along the North line of said Block 2, a distance of 345.34 feet to the point of beginning of the line to be described; thence South 6 degrees 26 minutes 40 seconds East 130.11 feet; thence South 89 degrees 33 minutes 20 seconds West 427.01 feet to the West line of said Mendota Street and thence surveying.

B. RAILROAD CORRIDOR ABUTTING (After Boundary Adjustment)

This part of the East Half of the Southwest Quarter of the Southwest Quarter of Section 28, Township 29 North, Range 22 West, Ramsey County, Minnesota, being a 56.00 foot wide strip the north line of which is the center line of the main track of the St. Paul, Stillwater and Taylor Falls Railroad Company, near the Chicago, St. Paul, Minneapolis and Omaha Railway Company, near the Chicago and North Western Transportation Company, near the Union Pacific Railroad, as said main track center line was originally located and established across said Section 28,

Compass bearings and distances by this instrument as hereby corrected and as to be recorded and submitted.

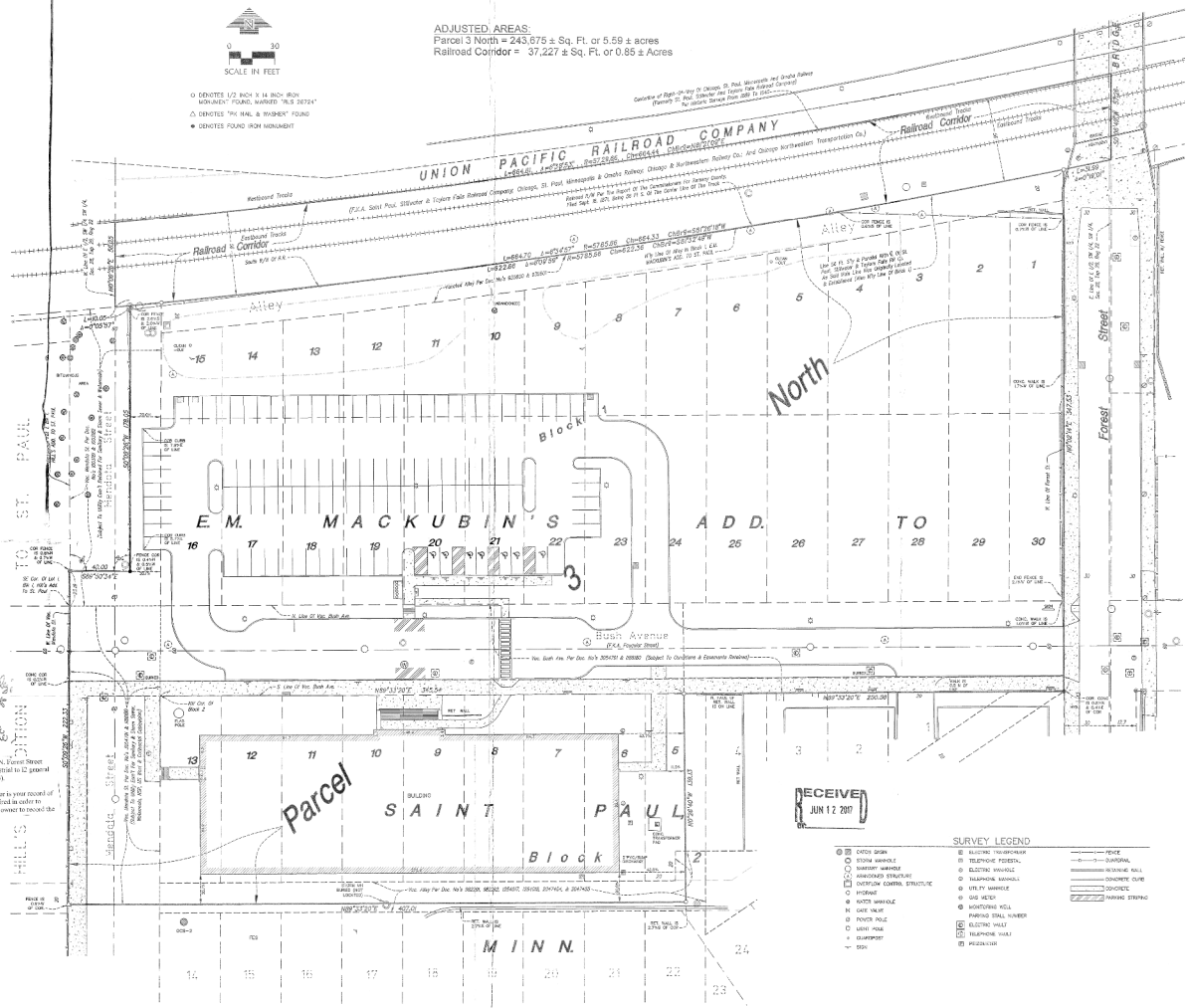
CITY OF SAINT PAUL
For **Paul** *Revised 6-19-17*
Planning Administrator
approval of adjustment of common boundaries only. Not for building purposes. The adjustment of common boundaries does not constitute approval of building use of this area.

subject to securing the portion of 777 N. Green Street (FYN 28-34-23-17-46-8) to become part of the railroad property from 11 (8) inches to 12 (2) inches to match the 12 (2) inches of the railroad property (Filing File #17-043-035)

The enclosed stamped and signed survey as approved by the Planning Administrator is a true and correct copy of the original survey as approved by the City of Saint Paul, which is required in order to record an adjustment of common boundaries. It is the responsibility of the property owner to record the adjustment of common boundaries.



ADJUSTED AREAS:
Parcel 3 North = 243,675 ± Sq. Ft. or 5.59 ± acres
Railroad Corridor = 37,227 ± Sq. Ft. or 0.85 ± Acres



RECEIVED
JUN 12 2017

SURVEY LEGEND

| | | | |
|---|---------------------------|---|--------------------|
| ○ | DATE MARK | ○ | RECEIVED |
| ○ | STATION MARK | ○ | TELEPHONE FEEDER |
| ○ | WATER MARK | ○ | ELECTRIC FEEDER |
| ○ | ADJUSTED STRUCTURE | ○ | RAILROAD TRACK |
| ○ | ADJUSTED COMMON STRUCTURE | ○ | RAILROAD CORRIDOR |
| ○ | PROPOSED | ○ | DISCONTINUED CURVE |
| ○ | WATER MARK | ○ | ADJUSTED CURVE |
| ○ | DATE MARK | ○ | RAILROAD TRACK |
| ○ | STATION MARK | ○ | RAILROAD CORRIDOR |
| ○ | WATER MARK | ○ | DISCONTINUED CURVE |
| ○ | ADJUSTED STRUCTURE | ○ | ADJUSTED CURVE |
| ○ | ADJUSTED COMMON STRUCTURE | ○ | RAILROAD TRACK |
| ○ | PROPOSED | ○ | RAILROAD CORRIDOR |
| ○ | WATER MARK | ○ | DISCONTINUED CURVE |
| ○ | DATE MARK | ○ | ADJUSTED CURVE |
| ○ | STATION MARK | ○ | RAILROAD TRACK |
| ○ | WATER MARK | ○ | RAILROAD CORRIDOR |
| ○ | ADJUSTED STRUCTURE | ○ | DISCONTINUED CURVE |
| ○ | ADJUSTED COMMON STRUCTURE | ○ | ADJUSTED CURVE |
| ○ | PROPOSED | ○ | RAILROAD TRACK |
| ○ | WATER MARK | ○ | RAILROAD CORRIDOR |
| ○ | DATE MARK | ○ | DISCONTINUED CURVE |
| ○ | STATION MARK | ○ | ADJUSTED CURVE |
| ○ | WATER MARK | ○ | RAILROAD TRACK |
| ○ | ADJUSTED STRUCTURE | ○ | RAILROAD CORRIDOR |
| ○ | ADJUSTED COMMON STRUCTURE | ○ | DISCONTINUED CURVE |
| ○ | PROPOSED | ○ | ADJUSTED CURVE |
| ○ | WATER MARK | ○ | RAILROAD TRACK |
| ○ | DATE MARK | ○ | RAILROAD CORRIDOR |
| ○ | STATION MARK | ○ | DISCONTINUED CURVE |
| ○ | WATER MARK | ○ | ADJUSTED CURVE |
| ○ | ADJUSTED STRUCTURE | ○ | RAILROAD TRACK |
| ○ | ADJUSTED COMMON STRUCTURE | ○ | RAILROAD CORRIDOR |
| ○ | PROPOSED | ○ | DISCONTINUED CURVE |
| ○ | WATER MARK | ○ | ADJUSTED CURVE |
| ○ | DATE MARK | ○ | RAILROAD TRACK |
| ○ | STATION MARK | ○ | RAILROAD CORRIDOR |
| ○ | WATER MARK | ○ | DISCONTINUED CURVE |
| ○ | ADJUSTED STRUCTURE | ○ | ADJUSTED CURVE |
| ○ | ADJUSTED COMMON STRUCTURE | ○ | RAILROAD TRACK |
| ○ | PROPOSED | ○ | RAILROAD CORRIDOR |
| ○ | WATER MARK | ○ | DISCONTINUED CURVE |
| ○ | DATE MARK | ○ | ADJUSTED CURVE |
| ○ | STATION MARK | ○ | RAILROAD TRACK |
| ○ | WATER MARK | ○ | RAILROAD CORRIDOR |
| ○ | ADJUSTED STRUCTURE | ○ | DISCONTINUED CURVE |
| ○ | ADJUSTED COMMON STRUCTURE | ○ | ADJUSTED CURVE |
| ○ | PROPOSED | ○ | RAILROAD TRACK |
| ○ | WATER MARK | ○ | RAILROAD CORRIDOR |
| ○ | DATE MARK | ○ | DISCONTINUED CURVE |
| ○ | STATION MARK | ○ | ADJUSTED CURVE |
| ○ | WATER MARK | ○ | RAILROAD TRACK |
| ○ | ADJUSTED STRUCTURE | ○ | RAILROAD CORRIDOR |
| ○ | ADJUSTED COMMON STRUCTURE | ○ | DISCONTINUED CURVE |
| ○ | PROPOSED | ○ | ADJUSTED CURVE |
| ○ | WATER MARK | ○ | RAILROAD TRACK |
| ○ | DATE MARK | ○ | RAILROAD CORRIDOR |
| ○ | STATION MARK | ○ | DISCONTINUED CURVE |
| ○ | WATER MARK | ○ | ADJUSTED CURVE |
| ○ | ADJUSTED STRUCTURE | ○ | RAILROAD TRACK |
| ○ | ADJUSTED COMMON STRUCTURE | ○ | RAILROAD CORRIDOR |
| ○ | PROPOSED | ○ | DISCONTINUED CURVE |
| ○ | WATER MARK | ○ | ADJUSTED CURVE |
| ○ | DATE MARK | ○ | RAILROAD TRACK |
| ○ | STATION MARK | ○ | RAILROAD CORRIDOR |
| ○ | WATER MARK | ○ | DISCONTINUED CURVE |
| ○ | ADJUSTED STRUCTURE | ○ | ADJUSTED CURVE |
| ○ | ADJUSTED COMMON STRUCTURE | ○ | RAILROAD TRACK |
| ○ | PROPOSED | ○ | RAILROAD CORRIDOR |
| ○ | WATER MARK | ○ | DISCONTINUED CURVE |
| ○ | DATE MARK | ○ | ADJUSTED CURVE |
| ○ | STATION MARK | ○ | RAILROAD TRACK |
| ○ | WATER MARK | ○ | RAILROAD CORRIDOR |
| ○ | ADJUSTED STRUCTURE | ○ | DISCONTINUED CURVE |
| ○ | ADJUSTED COMMON STRUCTURE | ○ | ADJUSTED CURVE |
| ○ | PROPOSED | ○ | RAILROAD TRACK |
| ○ | WATER MARK | ○ | RAILROAD CORRIDOR |
| ○ | DATE MARK | ○ | DISCONTINUED CURVE |
| ○ | STATION MARK | ○ | ADJUSTED CURVE |
| ○ | WATER MARK | ○ | RAILROAD TRACK |
| ○ | ADJUSTED STRUCTURE | ○ | RAILROAD CORRIDOR |
| ○ | ADJUSTED COMMON STRUCTURE | ○ | DISCONTINUED CURVE |
| ○ | PROPOSED | ○ | ADJUSTED CURVE |
| ○ | WATER MARK | ○ | RAILROAD TRACK |
| ○ | DATE MARK | ○ | RAILROAD CORRIDOR |
| ○ | STATION MARK | ○ | DISCONTINUED CURVE |
| ○ | WATER MARK | ○ | ADJUSTED CURVE |
| ○ | ADJUSTED STRUCTURE | ○ | RAILROAD TRACK |
| ○ | ADJUSTED COMMON STRUCTURE | ○ | RAILROAD CORRIDOR |
| ○ | PROPOSED | ○ | DISCONTINUED CURVE |
| ○ | WATER MARK | ○ | ADJUSTED CURVE |
| ○ | DATE MARK | ○ | RAILROAD TRACK |
| ○ | STATION MARK | ○ | RAILROAD CORRIDOR |
| ○ | WATER MARK | ○ | DISCONTINUED CURVE |
| ○ | ADJUSTED STRUCTURE | ○ | ADJUSTED CURVE |
| ○ | ADJUSTED COMMON STRUCTURE | ○ | RAILROAD TRACK |
| ○ | PROPOSED | ○ | RAILROAD CORRIDOR |
| ○ | WATER MARK | ○ | DISCONTINUED CURVE |
| ○ | DATE MARK | ○ | ADJUSTED CURVE |
| ○ | STATION MARK | ○ | RAILROAD TRACK |
| ○ | WATER MARK | ○ | RAILROAD CORRIDOR |
| ○ | ADJUSTED STRUCTURE | ○ | DISCONTINUED CURVE |
| ○ | ADJUSTED COMMON STRUCTURE | ○ | ADJUSTED CURVE |
| ○ | PROPOSED | ○ | RAILROAD TRACK |
| ○ | WATER MARK | ○ | RAILROAD CORRIDOR |
| ○ | DATE MARK | ○ | DISCONTINUED CURVE |
| ○ | STATION MARK | ○ | ADJUSTED CURVE |
| ○ | WATER MARK | ○ | RAILROAD TRACK |
| ○ | ADJUSTED STRUCTURE | ○ | RAILROAD CORRIDOR |
| ○ | ADJUSTED COMMON STRUCTURE | ○ | DISCONTINUED CURVE |
| ○ | PROPOSED | ○ | ADJUSTED CURVE |
| ○ | WATER MARK | ○ | RAILROAD TRACK |
| ○ | DATE MARK | ○ | RAILROAD CORRIDOR |
| ○ | STATION MARK | ○ | DISCONTINUED CURVE |
| ○ | WATER MARK | ○ | ADJUSTED CURVE |
| ○ | ADJUSTED STRUCTURE | ○ | RAILROAD TRACK |
| ○ | ADJUSTED COMMON STRUCTURE | ○ | RAILROAD CORRIDOR |
| ○ | PROPOSED | ○ | DISCONTINUED CURVE |
| ○ | WATER MARK | ○ | ADJUSTED CURVE |
| ○ | DATE MARK | ○ | RAILROAD TRACK |
| ○ | STATION MARK | ○ | RAILROAD CORRIDOR |
| ○ | WATER MARK | ○ | DISCONTINUED CURVE |
| ○ | ADJUSTED STRUCTURE | ○ | ADJUSTED CURVE |
| ○ | ADJUSTED COMMON STRUCTURE | ○ | RAILROAD TRACK |
| ○ | PROPOSED | ○ | RAILROAD CORRIDOR |
| ○ | WATER MARK | ○ | DISCONTINUED CURVE |
| ○ | DATE MARK | ○ | ADJUSTED CURVE |
| ○ | STATION MARK | ○ | RAILROAD TRACK |
| ○ | WATER MARK | ○ | RAILROAD CORRIDOR |
| ○ | ADJUSTED STRUCTURE | ○ | DISCONTINUED CURVE |
| ○ | ADJUSTED COMMON STRUCTURE | ○ | ADJUSTED CURVE |
| ○ | PROPOSED | ○ | RAILROAD TRACK |
| ○ | WATER MARK | ○ | RAILROAD CORRIDOR |
| ○ | DATE MARK | ○ | DISCONTINUED CURVE |
| ○ | STATION MARK | ○ | ADJUSTED CURVE |
| ○ | WATER MARK | ○ | RAILROAD TRACK |
| ○ | ADJUSTED STRUCTURE | ○ | RAILROAD CORRIDOR |
| ○ | ADJUSTED COMMON STRUCTURE | ○ | DISCONTINUED CURVE |
| ○ | PROPOSED | ○ | ADJUSTED CURVE |
| ○ | WATER MARK | ○ | RAILROAD TRACK |
| ○ | DATE MARK | ○ | RAILROAD CORRIDOR |
| ○ | STATION MARK | ○ | DISCONTINUED CURVE |
| ○ | WATER MARK | ○ | ADJUSTED CURVE |
| ○ | ADJUSTED STRUCTURE | ○ | RAILROAD TRACK |
| ○ | ADJUSTED COMMON STRUCTURE | ○ | RAILROAD CORRIDOR |
| ○ | PROPOSED | ○ | DISCONTINUED CURVE |
| ○ | WATER MARK | ○ | ADJUSTED CURVE |
| ○ | DATE MARK | ○ | RAILROAD TRACK |
| ○ | STATION MARK | ○ | RAILROAD CORRIDOR |
| ○ | WATER MARK | ○ | DISCONTINUED CURVE |
| ○ | ADJUSTED STRUCTURE | ○ | ADJUSTED CURVE |
| ○ | ADJUSTED COMMON STRUCTURE | ○ | RAILROAD TRACK |
| ○ | PROPOSED | ○ | RAILROAD CORRIDOR |
| ○ | WATER MARK | ○ | DISCONTINUED CURVE |
| ○ | DATE MARK | ○ | ADJUSTED CURVE |
| ○ | STATION MARK | ○ | RAILROAD TRACK |
| ○ | WATER MARK | ○ | RAILROAD CORRIDOR |
| ○ | ADJUSTED STRUCTURE | ○ | DISCONTINUED CURVE |
| ○ | ADJUSTED COMMON STRUCTURE | ○ | ADJUSTED CURVE |
| ○ | PROPOSED | ○ | RAILROAD TRACK |
| ○ | WATER MARK | ○ | RAILROAD CORRIDOR |
| ○ | DATE MARK | ○ | DISCONTINUED CURVE |
| ○ | STATION MARK | ○ | ADJUSTED CURVE |
| ○ | WATER MARK | ○ | RAILROAD TRACK |
| ○ | ADJUSTED STRUCTURE | ○ | RAILROAD CORRIDOR |
| ○ | ADJUSTED COMMON STRUCTURE | ○ | DISCONTINUED CURVE |
| ○ | PROPOSED | ○ | ADJUSTED CURVE |
| ○ | WATER MARK | ○ | RAILROAD TRACK |
| ○ | DATE MARK | ○ | RAILROAD CORRIDOR |
| ○ | STATION MARK | ○ | DISCONTINUED CURVE |
| ○ | WATER MARK | ○ | ADJUSTED CURVE |
| ○ | ADJUSTED STRUCTURE | ○ | RAILROAD TRACK |
| ○ | ADJUSTED COMMON STRUCTURE | ○ | RAILROAD CORRIDOR |
| ○ | PROPOSED | ○ | DISCONTINUED CURVE |
| ○ | WATER MARK | ○ | ADJUSTED CURVE |
| ○ | DATE MARK | ○ | RAILROAD TRACK |
| ○ | STATION MARK | ○ | RAILROAD CORRIDOR |
| ○ | WATER MARK | ○ | DISCONTINUED CURVE |
| ○ | ADJUSTED STRUCTURE | ○ | ADJUSTED CURVE |
| ○ | ADJUSTED COMMON STRUCTURE | ○ | RAILROAD TRACK |
| ○ | PROPOSED | ○ | RAILROAD CORRIDOR |
| ○ | WATER MARK | ○ | DISCONTINUED CURVE |
| ○ | DATE MARK | ○ | ADJUSTED CURVE |
| ○ | STATION MARK | ○ | RAILROAD TRACK |
| ○ | WATER MARK | ○ | RAILROAD CORRIDOR |
| ○ | ADJUSTED STRUCTURE | ○ | DISCONTINUED CURVE |
| ○ | ADJUSTED COMMON STRUCTURE | ○ | ADJUSTED CURVE |
| ○ | PROPOSED | ○ | RAILROAD TRACK |
| ○ | WATER MARK | ○ | RAILROAD CORRIDOR |
| ○ | DATE MARK | ○ | DISCONTINUED CURVE |
| ○ | STATION MARK | ○ | ADJUSTED CURVE |
| ○ | WATER MARK | ○ | RAILROAD TRACK |
| ○ | ADJUSTED STRUCTURE | ○ | RAILROAD CORRIDOR |
| ○ | ADJUSTED COMMON STRUCTURE | ○ | DISCONTINUED CURVE |
| ○ | PROPOSED | ○ | ADJUSTED CURVE |
| ○ | WATER MARK | ○ | RAILROAD TRACK |
| ○ | DATE MARK | ○ | RAILROAD CORRIDOR |
| ○ | STATION MARK | ○ | DISCONTINUED CURVE |
| ○ | WATER MARK | ○ | ADJUSTED CURVE |
| ○ | ADJUSTED STRUCTURE | ○ | RAILROAD TRACK |
| ○ | ADJUSTED COMMON STRUCTURE | ○ | RAILROAD CORRIDOR |
| ○ | PROPOSED | ○ | DISCONTINUED CURVE |
| ○ | WATER MARK | ○ | ADJUSTED CURVE |
| ○ | DATE MARK | ○ | RAILROAD TRACK |
| ○ | STATION MARK | ○ | RAILROAD CORRIDOR |
| ○ | WATER MARK | ○ | DISCONTINUED CURVE |
| ○ | ADJUSTED STRUCTURE | ○ | ADJUSTED CURVE |
| ○ | ADJUSTED COMMON STRUCTURE | ○ | RAILROAD TRACK |
| ○ | PROPOSED | ○ | RAILROAD CORRIDOR |
| ○ | WATER MARK | ○ | DISCONTINUED CURVE |
| ○ | DATE MARK | ○ | ADJUSTED CURVE |
| ○ | STATION MARK | ○ | RAILROAD TRACK |
| ○ | WATER MARK | ○ | RAILROAD CORRIDOR |
| ○ | ADJUSTED STRUCTURE | ○ | DISCONTINUED CURVE |
| ○ | ADJUSTED COMMON STRUCTURE | ○ | ADJUSTED CURVE |
| ○ | PROPOSED | ○ | RAILROAD TRACK |
| ○ | WATER MARK | ○ | RAILROAD CORRIDOR |
| ○ | DATE MARK | ○ | DISCONTINUED CURVE |
| ○ | STATION MARK | ○ | ADJUSTED CURVE |
| ○ | WATER MARK | ○ | RAILROAD TRACK |
| ○ | ADJUSTED STRUCTURE | ○ | RAILROAD CORRIDOR |
| ○ | ADJUSTED COMMON STRUCTURE | ○ | DISCONTINUED CURVE |
| ○ | PROPOSED | ○ | ADJUSTED CURVE |
| ○ | WATER MARK | ○ | RAILROAD TRACK |
| ○ | DATE MARK | ○ | RAILROAD CORRIDOR |
| ○ | STATION MARK | ○ | DISCONTINUED CURVE |
| ○ | WATER MARK | ○ | ADJUSTED CURVE |
| ○ | ADJUSTED STRUCTURE | ○ | RAILROAD TRACK |
| ○ | ADJUSTED COMMON STRUCTURE | ○ | RAILROAD CORRIDOR |
| ○ | PROPOSED | ○ | DISCONTINUED CURVE |
| ○ | WATER MARK | ○ | ADJUSTED CURVE |
| ○ | DATE MARK | ○ | RAILROAD TRACK |
| ○ | STATION MARK | ○ | RAILROAD CORRIDOR |
| ○ | WATER MARK | ○ | DISCONTINUED CURVE |
| ○ | ADJUSTED STRUCTURE | ○ | ADJUSTED CURVE |
| ○ | ADJUSTED COMMON STRUCTURE | ○ | RAILROAD TRACK |
| ○ | PROPOSED | ○ | RAILROAD CORRIDOR |
| ○ | WATER MARK | ○ | DISCONTINUED CURVE |
| ○ | DATE MARK | ○ | ADJUSTED CURVE |
| ○ | STATION MARK | ○ | RAILROAD TRACK |
| ○ | WATER MARK | ○ | RAILROAD CORRIDOR |
| ○ | ADJUSTED STRUCTURE | ○ | DISCONTINUED CURVE |
| ○ | ADJUSTED COMMON STRUCTURE | ○ | ADJUSTED CURVE |
| ○ | PROPOSED | ○ | RAILROAD TRACK |
| ○ | WATER MARK | ○ | RAILROAD CORRIDOR |
| ○ | DATE MARK | ○ | DISCONTINUED CURVE |
| ○ | STATION MARK | ○ | ADJUSTED CURVE |
| ○ | WATER MARK | ○ | RAILROAD TRACK |
| ○ | ADJUSTED STRUCTURE | ○ | RAILROAD CORRIDOR |
| ○ | ADJUSTED COMMON STRUCTURE | ○ | DISCONTINUED CURVE |
| ○ | PROPOSED | ○ | ADJUSTED CURVE |
| ○ | WATER MARK | ○ | RAILROAD TRACK |
| ○ | DATE MARK | ○ | RAILROAD CORRIDOR |
| ○ | STATION MARK | ○ | DISCONTINUED CURVE |
| ○ | WATER MARK | ○ | ADJUSTED CURVE |
| ○ | ADJUSTED STRUCTURE | | |