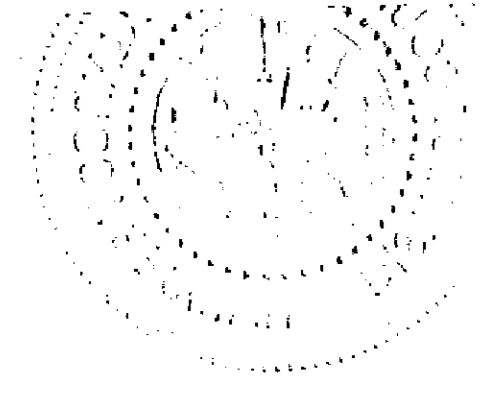
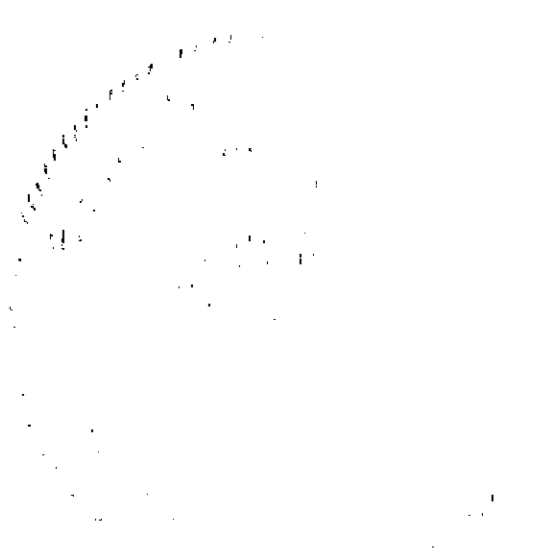


Registrar of Titles, Ramsey, MN
Date Filed: 10/27/2000 12:00 PM
As Doc #: 1615980
On CT # (s):
518767,



1615980



ADVANCE SURVEYING & ENGINEERING CO.

5300 S. Hwy. No. 101 Minnetonka, MN 55345 Phone (612) 474 7964 Fax (612) 474 8267

SURVEY FOR: **CLARK ARMSTEAD**

SURVEYED: January, 2000 DRAFTED: January 19, 2000
 REVISED: August 9, 2000 to show Judicial Landmarks set as per Interlocutory Order Determining Boundaries C5-99-5557, District Court, Second Judicial District, County of Ramsey, State of Minnesota.

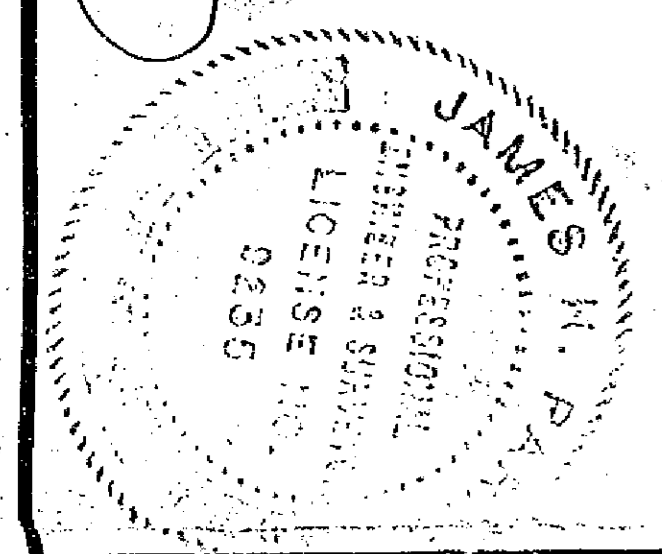
REVISED: September 5, 2000 to add certification for setting Judicial Landmarks.

LEGAL DESCRIPTION:
 Lots 10, 11 and 12, Block 5, Clarkes Addition to the City of St. Paul, subject to street, Ramsey County, Minnesota.

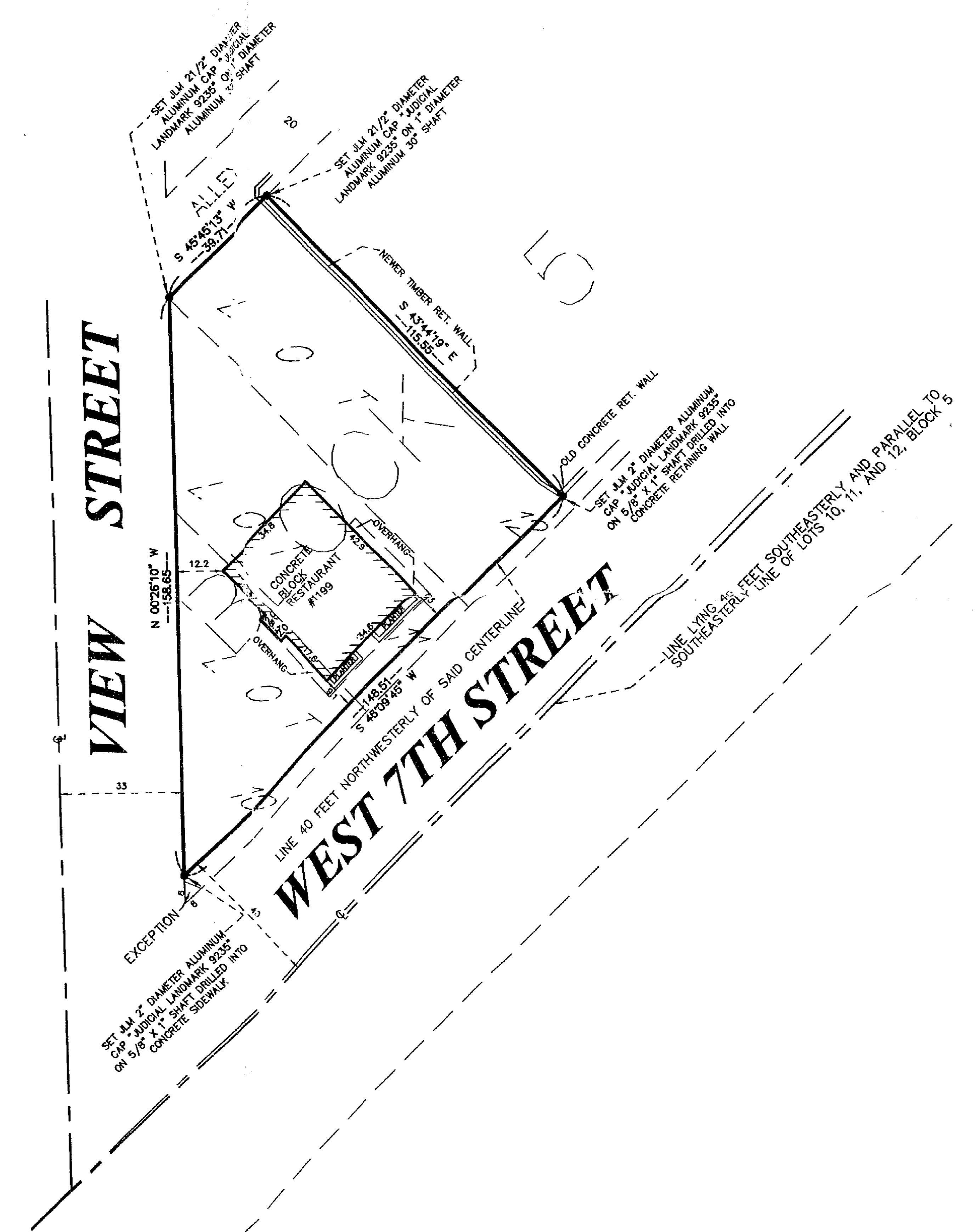
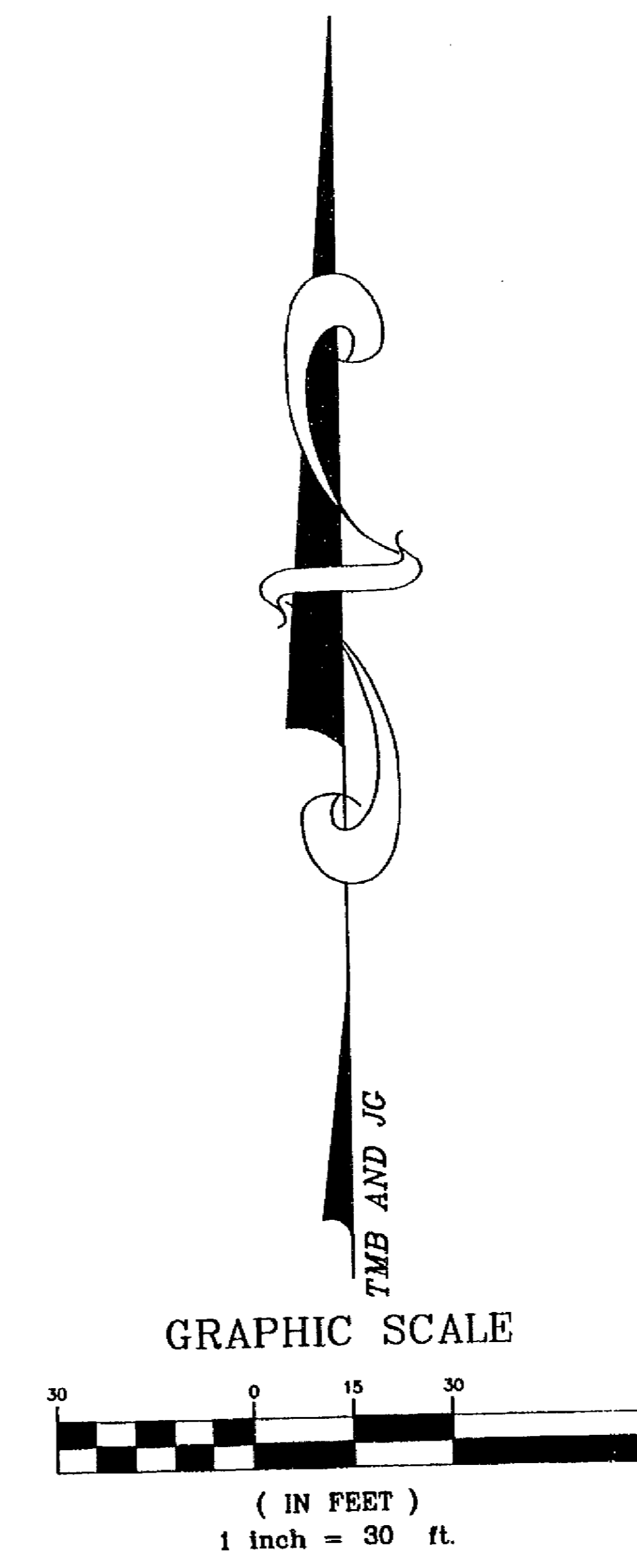
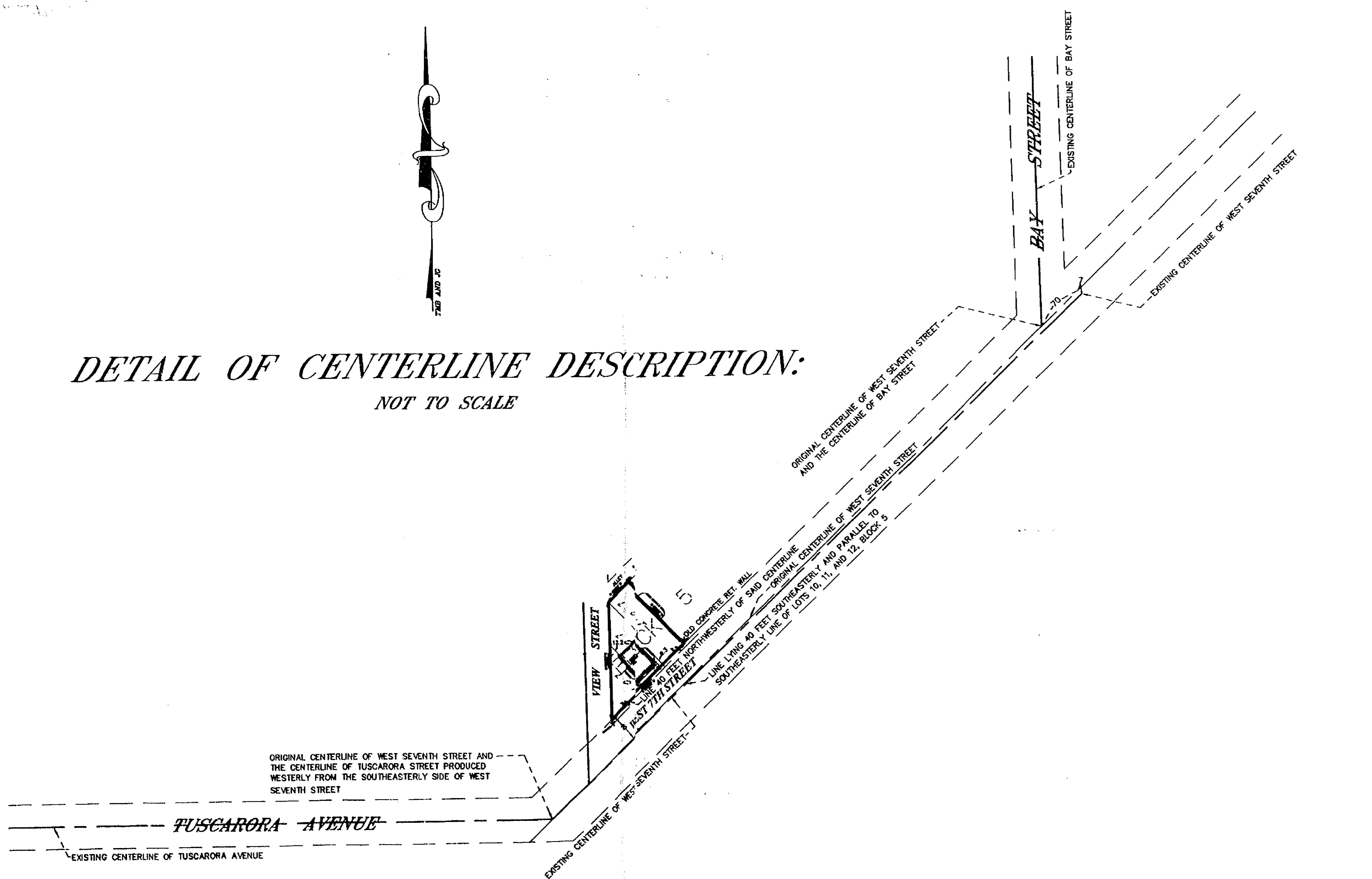
SCOPE OF WORK:
 1. Showing the length and direction of boundary lines of the above legal description. The scope of our services does not include determining what you own, which is a legal matter. Please check the legal description with your records or consult with competent legal counsel, if necessary, to make sure that it is correct, and that any matters of record, such as easements, that you wish shown on the survey, have been shown.
 2. Showing the location of existing improvements we deemed important.
 3. Setting new monuments or verifying old monuments to mark the corners of the property.

CERTIFICATION:
 I hereby certify that this survey was prepared by me or under my direct supervision and that I am a Professional Engineer and a Professional Surveyor under the Laws of the State of Minnesota.

James H. Parker
 James H. Parker P.E. & P.S. No. 9235, President



DETAIL OF CENTERLINE DESCRIPTION:
 NOT TO SCALE



CERTIFICATION FOR SETTING JUDICIAL LANDMARKS:
 I hereby certify that on the 9th day of August, 2000 pursuant to order of the District Court, Second Judicial District, State of Minnesota, County of Ramsey, File No. C5-99-5557, I placed Judicial Landmarks as indicated on the above plat, each of said Landmarks consisting of materials as shown on the drawing with the words "JUDICIAL LANDMARK" in raised letters on the top.

James H. Parker
 James H. Parker P.E. & P.S.
 Minnesota RLS No. 9235

MICHAEL G. MORIARTY, Court Administrator,
 Ramsey County, State of Minnesota, does hereby
 certify that the attached instrument is a true and
 correct copy of the original on file and
 of record in my office.
 Dated this 25th day of October 2000
 MICHAEL G. MORIARTY, Court Administrator
 By *Michael Moriarty*
 File No. C5-99-5557

